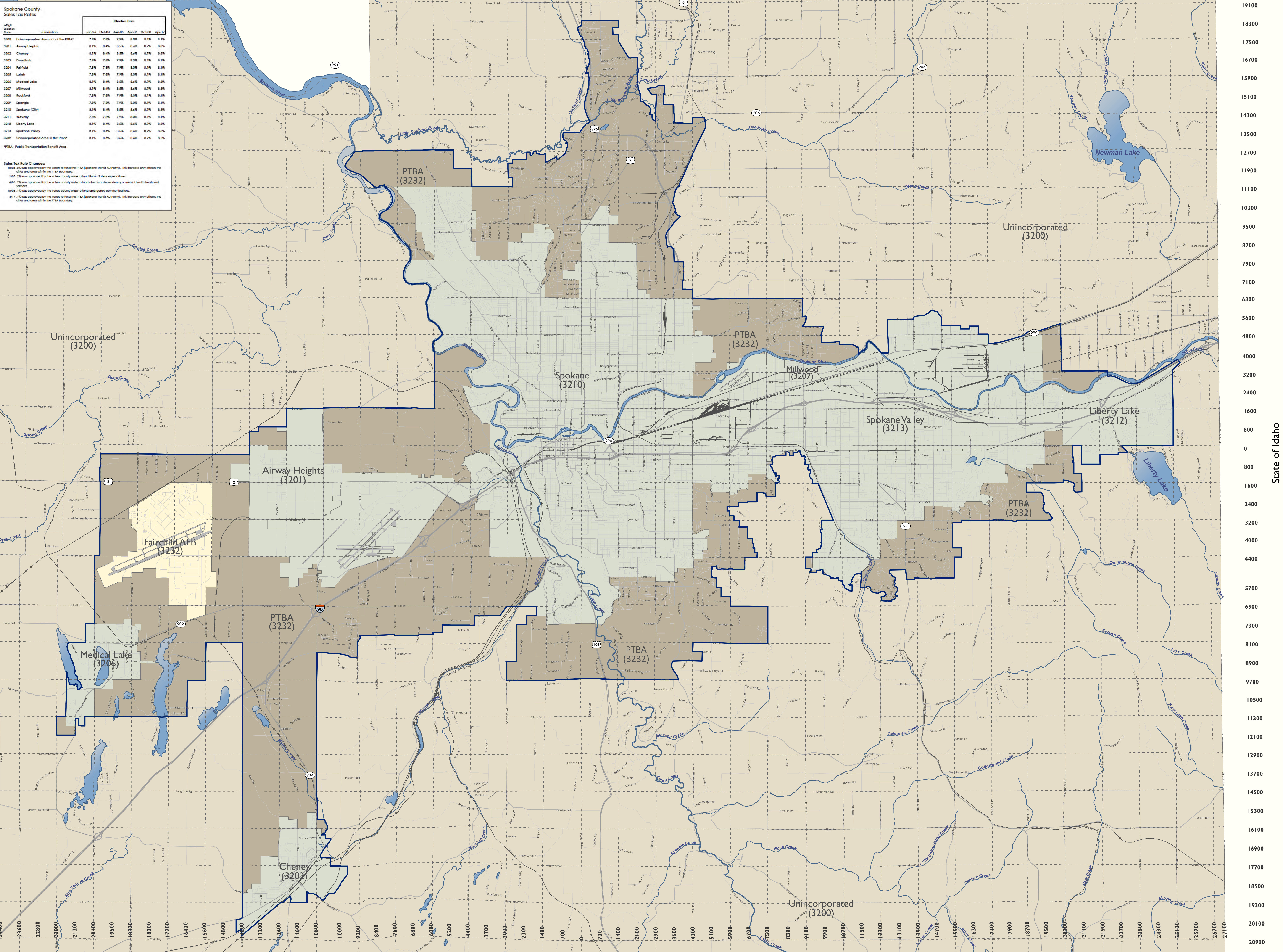


| City Location | Jurisdiction | Effective Date | | | | |
|---------------|--------------------------------------|----------------|--------|--------|--------|--------|
| | | Jan-76 | Oct-04 | Jan-05 | Apr-06 | Apr-17 |
| 3200 | Unincorporated Area out of the PTBA* | 7.8% | 7.8% | 7.9% | 8.0% | 8.1% |
| 3201 | Airway Heights | 8.1% | 8.4% | 8.5% | 8.6% | 8.7% |
| 3202 | Cheney | 8.1% | 8.4% | 8.5% | 8.6% | 8.7% |
| 3203 | Dear Park | 7.8% | 7.8% | 7.9% | 8.0% | 8.1% |
| 3204 | Fairfield | 7.8% | 7.8% | 7.9% | 8.0% | 8.1% |
| 3205 | Latah | 7.8% | 7.8% | 7.9% | 8.0% | 8.1% |
| 3206 | Medical Lake | 8.1% | 8.4% | 8.5% | 8.6% | 8.7% |
| 3207 | Millwood | 8.1% | 8.4% | 8.5% | 8.6% | 8.7% |
| 3208 | Rockford | 7.8% | 7.8% | 7.9% | 8.0% | 8.1% |
| 3209 | Spangle | 7.8% | 7.8% | 7.9% | 8.0% | 8.1% |
| 3210 | Spokane (City) | 8.1% | 8.4% | 8.5% | 8.6% | 8.7% |
| 3211 | Waverly | 7.8% | 7.8% | 7.9% | 8.0% | 8.1% |
| 3212 | Liberty Lake | 8.1% | 8.4% | 8.5% | 8.6% | 8.7% |
| 3213 | Spokane Valley | 8.1% | 8.4% | 8.5% | 8.6% | 8.7% |
| 3232 | Unincorporated Area in the PTBA* | 8.1% | 8.4% | 8.5% | 8.6% | 8.7% |

*PTBA - Public Transportation Benefit Area

Sales Tax Rate Changes:
 1004 - 0.5% was approved by the voters to fund the PTBA (Spokane Transit Authority). This increase only affects the cities and area within the PTBA boundary.
 1008 - 0.5% was approved by the voters county wide to fund public safety expenditures.
 4106 - 0.5% was approved by the voters county wide to fund criminal dependency or mental health treatment services.
 1008 - 0.5% was approved by the voters county wide to fund emergency communications.
 4117 - 0.5% was approved by the voters to fund the PTBA (Spokane Transit Authority). This increase only affects the cities and area within the PTBA boundary.



NOTE - The information on this map is compiled from various sources and is subject to constant revision.

Scale: 1 inch = 0.81 miles
 Map Projection: State Plane NAD83-HARN

Spokane Public Transportation Benefit Area

Legend

- Sales Tax Areas
 - Incorporated inside PTBA
 - Unincorporated inside PTBA
 - Incorporated outside PTBA
 - Unincorporated outside PTBA
 - Fairchild Air Force Base
- PTBA Boundary
- Lakes & Streams

Map Produced: February 2018
 Spokane County IT GIS