

# Annual Performance Report – Passenger Facilities

---

Edition No. 4 (2015 Data)

***Prepared for:***  
**Board of Directors**

**Draft**

**6/16/2016**



Spokane Transit assures nondiscrimination in accordance with Title VI of the Civil Rights Act of 1964. For more information, see [www.spokanetransit.com](http://www.spokanetransit.com). Upon request, alternative formats of this information will be produced for people who are disabled. Please call (509) 325-6094 (TTY Relay 711) or email [smillbank@spokanetransit.com](mailto:smillbank@spokanetransit.com).

# Table of Contents

Executive Summary.....	1
2015 Results.....	1
Bus Stops.....	1
Ridership .....	1
Top Bus Stops for Boarding Activity – 2015.....	2
Capital Projects .....	2
Transit Shelters .....	2
Operational Improvements .....	3
Park and Ride Lots.....	4
Owned/Leased Facilities .....	5
Cooperative Facilities.....	16
Bike Lockers .....	22
Appendix .....	23
Table 1 - 2015 Weekday Boarding Activity by Stop.....	23
Table 2 – New Stop Locations That Meet 25 Boardings per Day .....	66

# Executive Summary

---

Spokane Transit provides fixed route bus service, Paratransit service comparable to fixed route service and Vanpool service, to the cities of Airway Heights, Cheney, Liberty Lake, Medical Lake, Millwood, Spokane and Spokane Valley as well as unincorporated areas of Spokane County that are within the Public Transportation Benefit Area (PTBA).

In addition to providing fixed route, Paratransit and Vanpool service, Spokane Transit also serves 1,669 bus stops, serves and maintains 127 transit shelters, serves and maintains 12 park and ride lots as well as provides bike lockers at select locations in the service area.

The following report will provide information in regards to Spokane Transit facilities to include bus stop level ridership, park and ride lot utilization, and passenger facilities projects delivery.

Spokane Transit believes it must invest responsibly in infrastructure that supports STA's Mission Statement and stated Comprehensive Plan goals and policies.

## 2015 Results

---

### Bus Stops

The number of bus stops remained steady in 2015. New stops have been added since the first of the year as part of the May 2016 service change.

### Ridership

In 2015 Spokane Transit carried 10,788,000 passengers compared to 11,324,434 the year prior.

The following table indicates the top ten weekday boarding locations for bus stops for the year. Boarding data is compiled based on onboard route surveys completed as part of Spokane Transit's Transit Monitoring Program (TMP). Each service day, except holidays, two randomly selected trips are surveyed. Additional trips are also selected to be surveyed each day and in total the TMP program surveyed more than 7,200 trips in 2015.

## Top Bus Stops for Boarding Activity – 2015

The following bus stops experienced the highest passenger boarding activity in 2015. This list excludes transit centers and park and ride lot facilities.

Rank	Stop Name	DIR	Routes Served	Average Weekday Boardings	
				2015	2014
1	Betz and Al Ogdon Way	OB/CCW	66 Cheney Express, 68 Cheney Local	250	305
2	Division and Hoffman	IB	25 Division	212	219
3	Elm and C Street	IB/CCW	66 Cheney/EWU, 68 Cheney Local, 165 Cheney Express	198	150
4	Betz and SR 904	IB	66 Cheney/EWU, 68 Cheney Local	194	157
5	Lincoln and Spokane Falls	OB	20 SFCC, 21 West Broadway, 22 NW BLVD, 23 Maple/Ash, 24 Monroe, 124 North Express	189	140
6	Division and Wellesley	OB	25 Division	177	155
7	Sprague and Hayford	IB	61 Hwy 2 via Browne's Addition	163	144
8	Monroe and Montgomery	IB	24 Monroe	155	181
9	Sprague and Custer	IB	90 Sprague	150	120
10	Monroe and Broadway	OB	24 Monroe, 124 North Express	145	124

*IB = Inbound, OB = Outbound, CW = Clockwise, CCW = Counter-Clockwise*

## Capital Projects

### Transit Shelters

#### ***Sunset Highway and Government Way***

Spokane Transit installed a transit shelter and solar lighting at the inbound bus stop on Sunset Highway and Government Way as well as pedestrian improvements at both the inbound and outbound bus stops. This project was funded under Spokane Transit's Passenger and Operational Facilities program of the Capital Improvement Program (CIP). The annual budget for the program is \$100,000 and is comprised of Federal and local funds.

The addition of the transit shelter at the inbound stop results in a covered and lighted waiting area for approximately 50 passengers on an average week day. Sidewalk connections were also made between existing sidewalks on Government Way to the bus stop locations along Sunset Highway. The outbound bus stop was relocated from a nearside location to farside location in

order to allow for the required space to construct the sidewalk improvements. Additionally, the relocation of the outbound bus stop corrected a safety issue where customers would walk in the street in order to get from the bus stop to Government Way due to the lack of a connecting sidewalk.

***Mission and Crestline***

In partnership with the City of Spokane and the Chief Garry Neighborhood Council, Spokane Transit managed the construction and installation of a transit shelter at the inbound stop on Mission Avenue and Crestline Street. The shelter was procured from LNI Manufacturing, LLC of Hawthorne, California after a competitive bid process. The project was fully funded with Community Development Block Grant (CDBG) funds that were awarded to the Chief Garry Neighborhood.

***Potential Future Shelter Project Sites***

Each year Spokane Transit reviews stop level boarding data to determine if any stops that previously had ridership numbers too low to warrant shelter now meet the minimum threshold of 25 boardings on an average weekday.

Table 2 in the Appendix summarizes the stop locations that previously fell below 25 boardings per average weekday but are now at or above the minimum threshold. It should be noted that simply meeting minimum boardings is not a guarantee that a shelter can be placed. Spokane Transit must evaluate each site individually to determine property ownership, available space and funding available.

**Operational Improvements**

***North Nevada Street***

In 2015 eight bus stops along the North Nevada Street corridor were improved to bring them into compliance with Americans with Disabilities Act (ADA) standards. Existing conditions included sidewalks separated from the curb by drainage swales. The swales made it difficult for customers to board and alight at the bus stops and impossible for a wheelchair. Spokane Transit poured concrete pads to connect the curb and sidewalk, giving customers a firm, level surface from which they could board and alight Spokane Transit buses.



The improved locations were located at:

- Northbound and southbound Nevada Street at Lincoln Road

- Northbound and southbound Nevada Street at Magnesium Road
- Southbound Nevada Street at Hoerner Avenue
- Southbound Nevada Street at Holland Avenue
- 9832 Nevada Street
- Eastbound Hawthorne Road at Nevada Street

### ***Indian Trail Restroom***

In an effort to improve the welfare of Spokane Transit operators and improve operational efficiency Spokane Transit placed a prefabricated restroom at the end of the line location for Route 23 Maple/Ash on North Indian Trail road near West Blackfoot Avenue. The total project cost of \$121,477 was comprised of local funds.

Spokane Transit leases the land on which the restroom was installed from the Spokane Parks Department. The restroom building is climate controlled and includes a key card lock so that it can only be accessed by authorized Spokane Transit personnel.

### ***South Hill Park and Ride***

Two key operational improvements were implemented at the South Hill Park and Ride in 2015. First, as a result of a service change conducted in 2012, the southernmost bus bay at the park and ride is occupied by a bus during that route's layover period. This resulted in a tight turn radius for buses entering the park and ride from southbound Southeast Boulevard. In order to alleviate the radius issue, Spokane Transit widened the curb apron to allow buses to be able to enter from Southeast Boulevard and pass a bus in the southernmost bay without issue.

Secondly, South Hill Park and Ride was selected as a location to receive dynamic message signage as part of Spokane Transit's CAD/AVL system.

The total project cost of \$35,514 was comprised of local funds.

## **Park and Ride Lots**

Spokane Transit operates twelve park and ride locations within the service area. Eight are either owned or leased by Spokane Transit while the remaining four are made possible by cooperative agreement. Typically a cooperative agreement includes Spokane Transit contributing to the maintenance and snow removal of the lot.

Spokane Transit collects park and ride utilization data in two ways:

- 1) Via routine surveys conducted by Spokane Transit Security personnel.
- 2) Annual License plate surveys of all park and ride lots in the service area.

Counts performed by security staff are conducted multiple times each weekday with a minimum of one count during the peak period when utilization of the lot is typically highest (exception: counts may or may not be conducted daily at outlying lots such as K Street Station or Cheney based on available manpower). The charts that follow indicate the 85<sup>th</sup> percentile data related to park and ride counts.

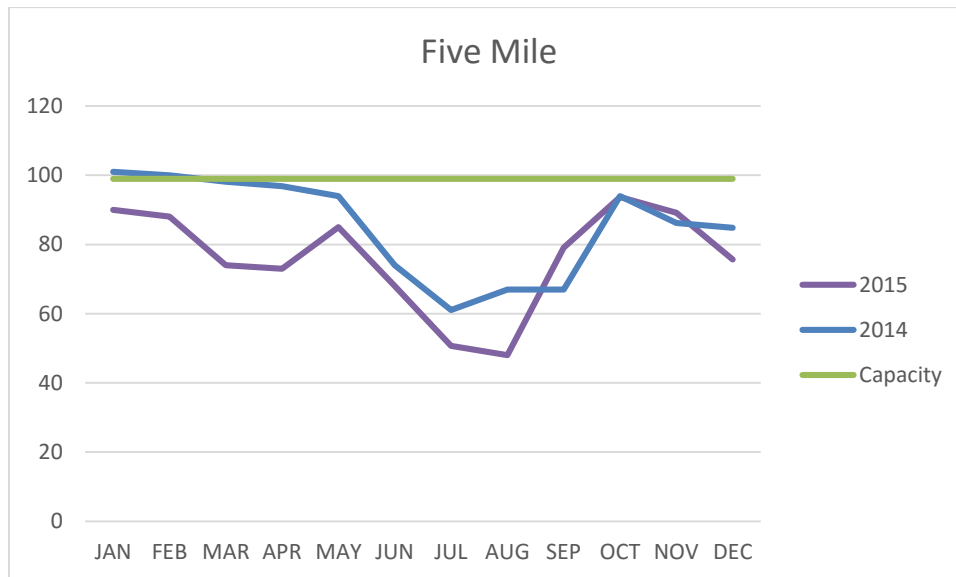
## Owned/Leased Facilities

### Five Mile Park and Ride

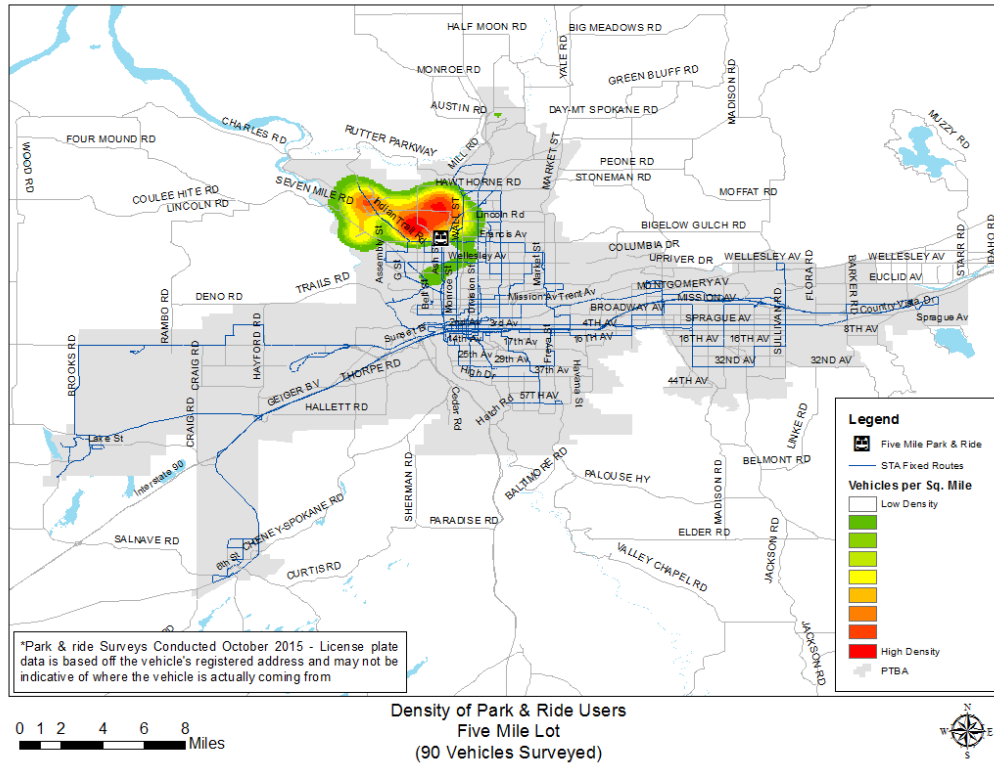
City	Location	Available Parking Spaces
Spokane	Ash Street and Five Mile Road	99

Five Mile Park and Ride is served by the Route 22 Northwest Boulevard, Route 24 Monroe, Route 27 Hillyard and Route 66 Cheney on select trips. Peak service on weekdays provides eight buses an hour departing to downtown Spokane.

Five Mile Park and Ride averaged 193 boardings per weekday in 2015.



As seen on the map below, the Five Mile Park and Ride maintains a strong density of users from areas to the north as well as northwest along the Indian Trail Road corridor. Indian Trail has been slated for route improvements which would add night and weekend service as part of STA Moving Forward.

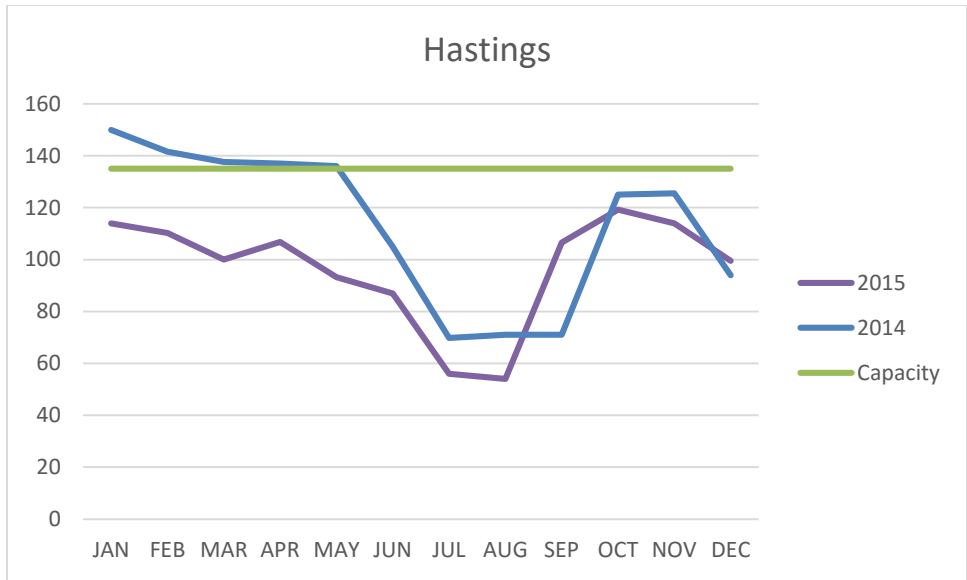


**Hastings Park and Ride**

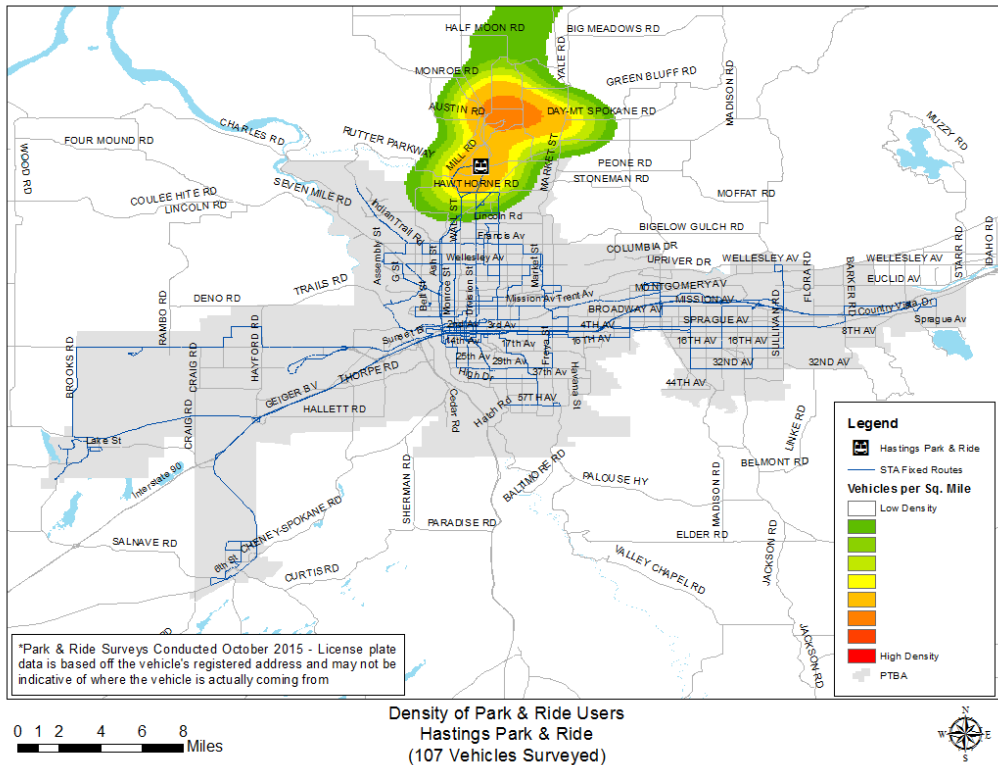
City	Location	Available Parking Spaces
Spokane	Hastings Road and Mayfair Road	135

Hastings Park and Ride is served by Routes 25 Division, 124 North Express and Route 66 Cheney/EWU which has two morning departures when EWU is in session. The Route 25 provides fifteen minute peak frequency and thirty minute frequency on nights and weekends. The Route 124 operates on weekdays only. In 2015 there were 352 boardings per average weekday.





Like Jefferson Lot, Hastings Park and Ride’s utilization is highly dependent on whether or not Eastern Washington University is in session. Route 66 Cheney/EWU boardings account for approximately 30 percent of boardings each weekday when school is in session.

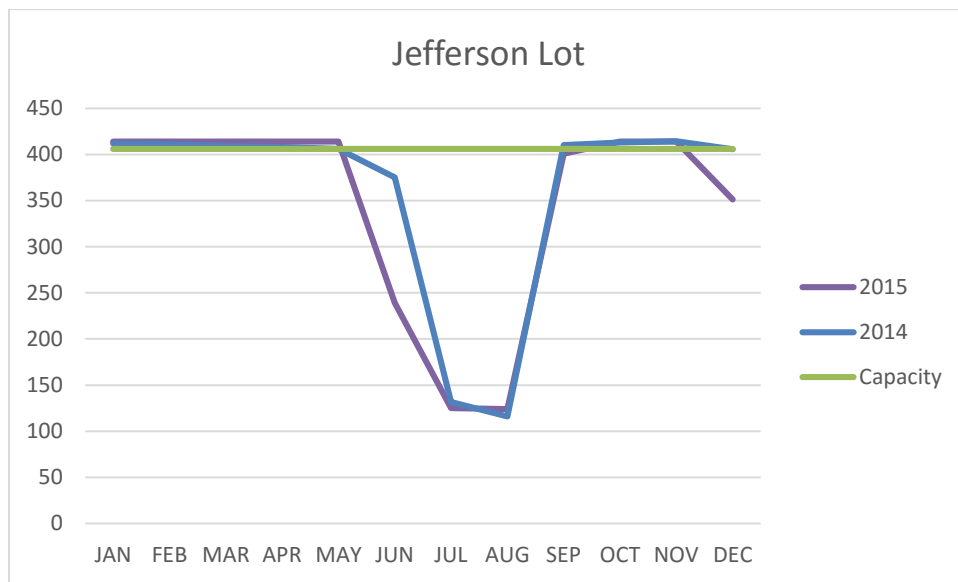


**Jefferson Lot**

City	Location	Available Parking Spaces
Spokane	Jefferson Street between 3 <sup>rd</sup> and 4 <sup>th</sup> Avenues	406

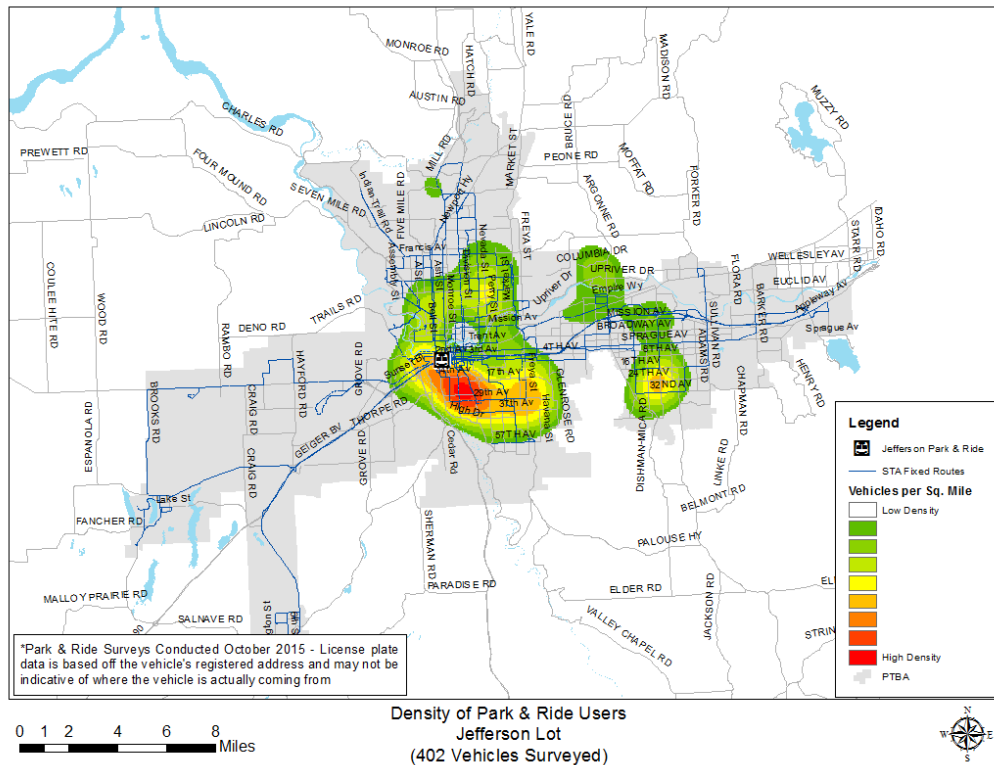
The Jefferson Lot is served by the Route 66 Cheney/EWU with fifteen minute frequency, or better, during the peak period when school is in session, thirty minute frequency on non-school days and hourly frequency on nights and weekends. The lot is also served by Route 62 with limited weekday service and Route 165 during the peak period.

Use of Jefferson Lot fluctuates greatly based on whether Eastern Washington University is in session. During the academic school year it is not uncommon for the lot to be at capacity while in the summer period utilization declines sharply. For 2015, the average weekday boardings at Jefferson lot was 631 based on on-board survey data.



In previous years, the maximum capacity of Jefferson Lot was listed at 420 parking stalls. In 2015, in preparation for paving, pedestrian and amenity improvements it was discovered that the number of marked marking stalls was actually 406. That new figure is represented in the chart above. Lot improvements scheduled for the summer of 2016 will reduce capacity slightly to 402 marked parking stalls.

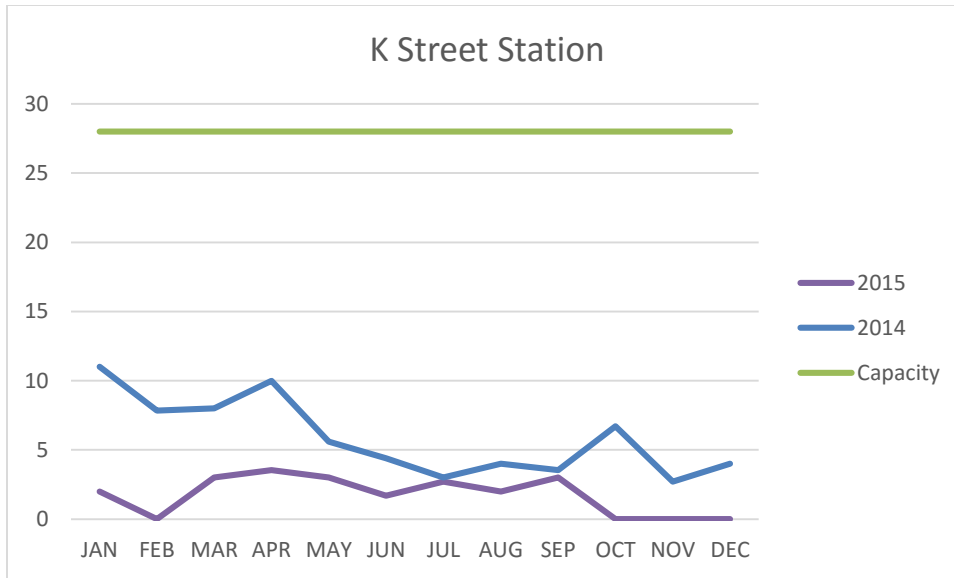
Those utilizing the park and ride at Jefferson Lot come from areas south and north of the Interstate 90 corridor through Spokane as well as areas of Millwood and Spokane Valley. The south hill area of Spokane is the densest area of origin for vehicles parking at Jefferson Lot.



**K Street Station**

City	Location	Available Parking Spaces
Cheney	K Street and 1 <sup>st</sup> Avenue	28

K Street station is served by the Route 68 Cheney Local as well as the Route 165 Cheney Express. The Route 68 provides thirty minute peak frequency on weekdays and hourly frequency on nights and weekends. The Route 165 provides thirty minute peak frequency on weekdays only.



K Street station average 63 boardings per week in 2015, slightly higher than 2014’s 60 boardings per weekday.

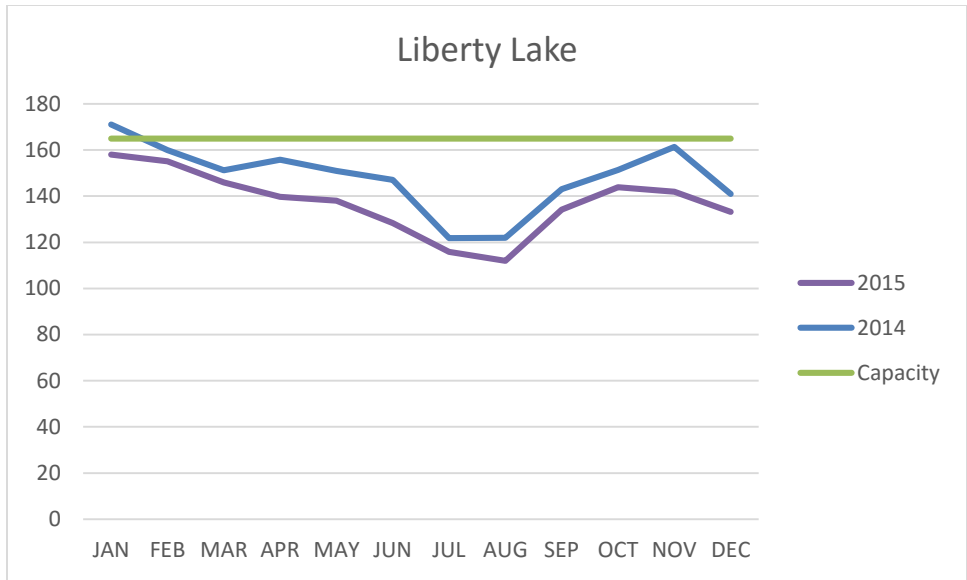
The results from the October 2015 park and ride surveys did not yield sufficient data which could be used to develop and origin map. Three vehicles were recorded in the lot during the October 2015 survey. None of the three vehicles originated within the PTBA.

***Liberty Lake Park and Ride***

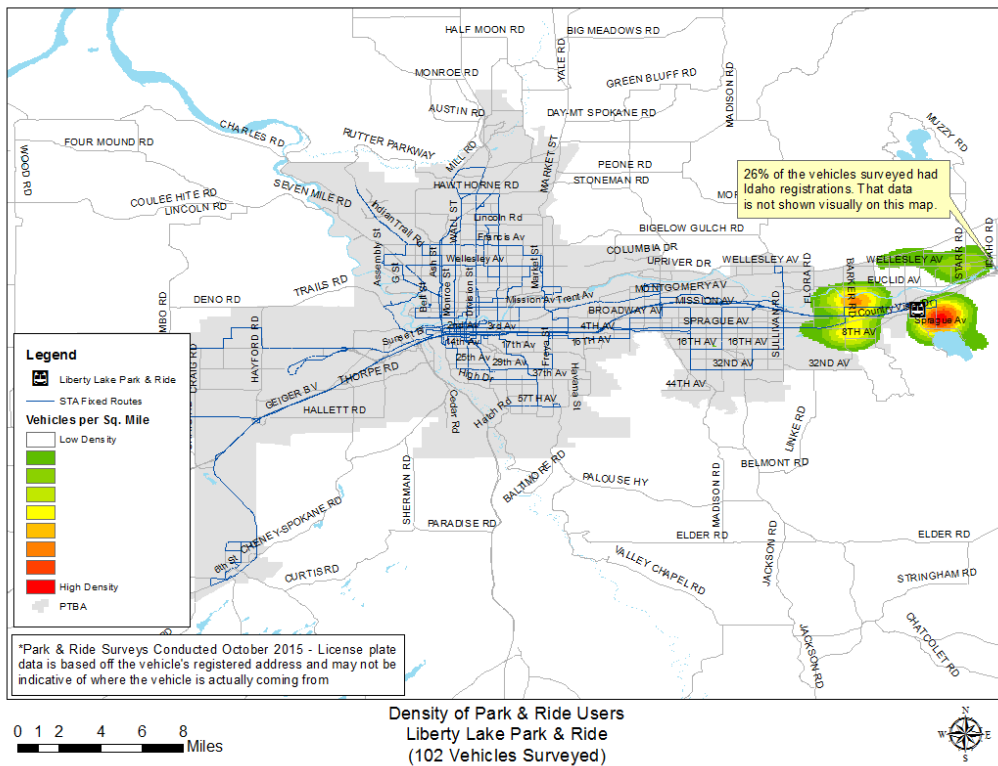
City	Location	Available Parking Spaces
Liberty Lake	E Mission Avenue and Meadowwood Lane	165

Liberty Lake Park and Ride is served by the Route 98 Liberty Lake via Sprague and the Route 174 Liberty Lake Express. The Route 98 provides thirty minute peak frequency and hourly service on nights and weekends between Liberty Lake Park and Ride and the Valley Transit Center via Sprague Avenue. The Route 174 provides between eight and fifteen minute peak frequency weekdays only to downtown Spokane via Interstate 90.

2015 was the first full year overflow parking was available for Liberty Lake Park and Ride customers at the City of Liberty Lake Town Square. Typically, usage of the overflow lot is low during the week with two to five vehicles in the lot. Please note vehicles utilizing the overflow parking are not represented in the chart on the following page.



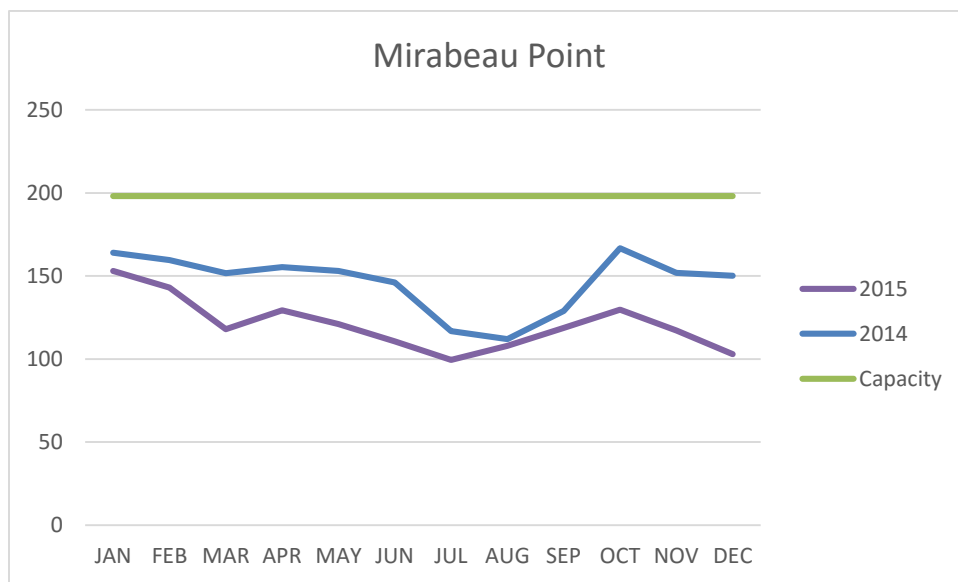
The Liberty Lake Park and Ride consistently draws from the immediate area within the City of Liberty Lake as well as the Barker Road corridor and areas of Wellesley Avenue north of the Spokane River. Commuters from Idaho routinely make up one quarter of vehicles parking at the park and ride as noted in the map below.



**Mirabeau Point Park and Ride**

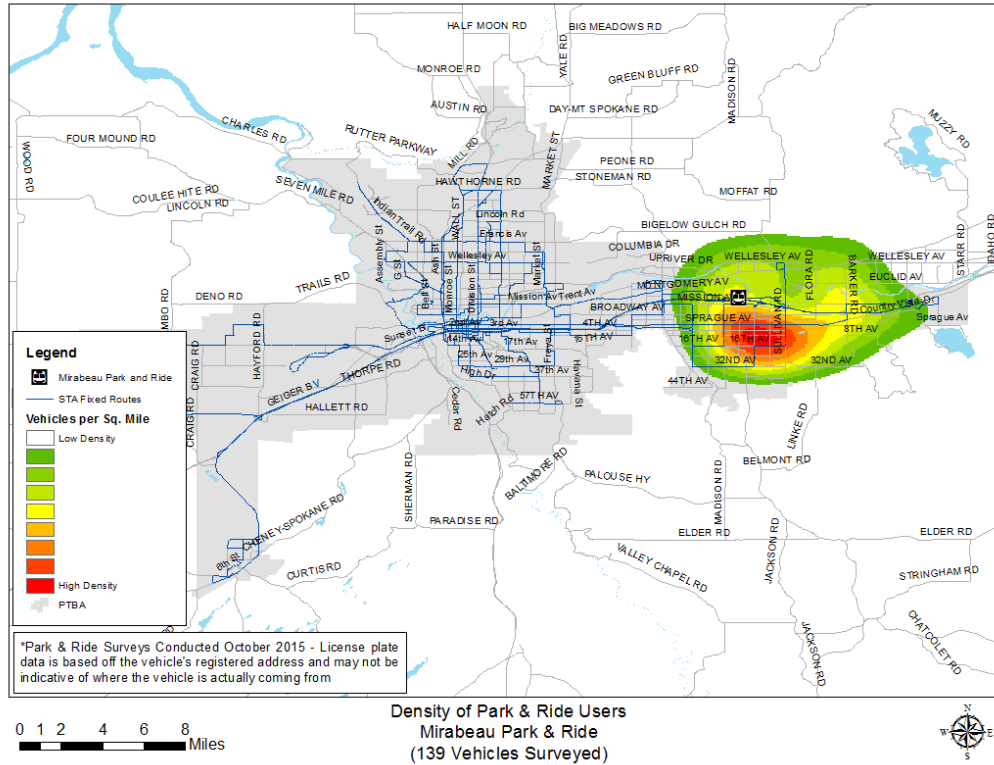
City	Location	Available Parking Spaces
Spokane Valley	13209 E. Indiana Avenue	198

Mirabeau Point Park and Ride is served by the Route 32 Trent/Montgomery, Route 96 Pines/Sullivan, Route 97 South Valley, and the Route 174 Liberty Lake Express. These routes provide customers with various trip options to include direct service to Spokane Community College via the Route 32, access to the Valley Transit Center and Pines and Sullivan corridors via the Route 96 and 97 as well as access to downtown Spokane via the Route 174.



Mirabeau Park and Ride is the third busiest park and ride, behind the Valley Transit Center and Jefferson Lot, in the Spokane Transit system with an average of 559 boardings per average weekday.

During the license plate audit conducted in October of 2015, 138 vehicles were recorded out of a total capacity of 198 available parking stalls. As shown in the map on the following page, the densest area of origin for vehicles parking in the lot are within the City of Spokane Valley, concentrated in an area boarded by Sprague Avenue to the north, University Road to the west, Sullivan Road to the east and 32<sup>nd</sup> Avenue to the south.

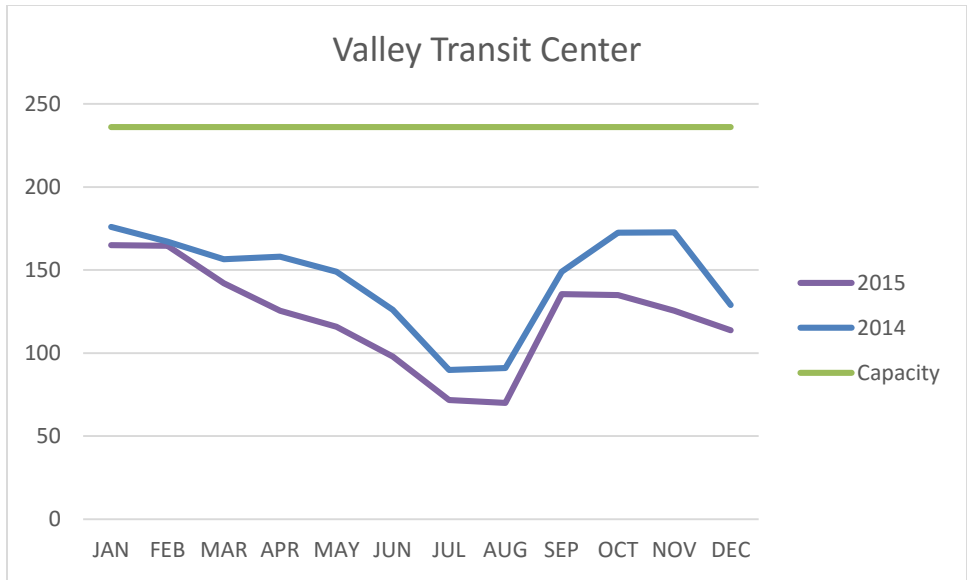


**Pence-Cole Valley Transit Center (VTC)**

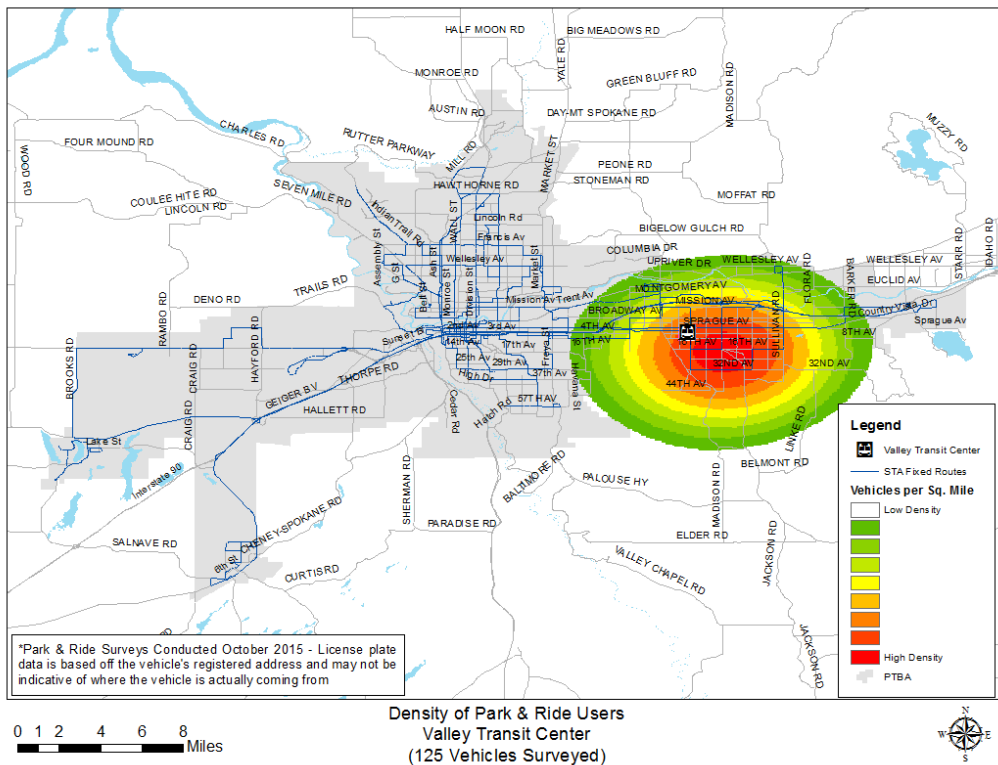
City	Location	Available Parking Spaces
Spokane Valley	4 <sup>th</sup> Avenue and University Road	236

The VTC is served by the Route 90 Sprague, Route 96 Pines/Sullivan, Route 97 South Valley, Route 98 Liberty Lake via Sprague and the Route 173 VTC Express. The Route 90 offers fifteen minute peak frequency while the 96, 97, 98, and 173 all offer thirty minute peak frequency. Route 90 provides thirty minute frequency nights and weekends while the 96, 97 and 98 offers hourly service.

The VTC is the third busiest stop location in the entire Spokane Transit system with an average of 1,375 boardings per weekday.



Results from the October 2015 survey indicates the densest origin of vehicles originated within the City of Spokane Valley.



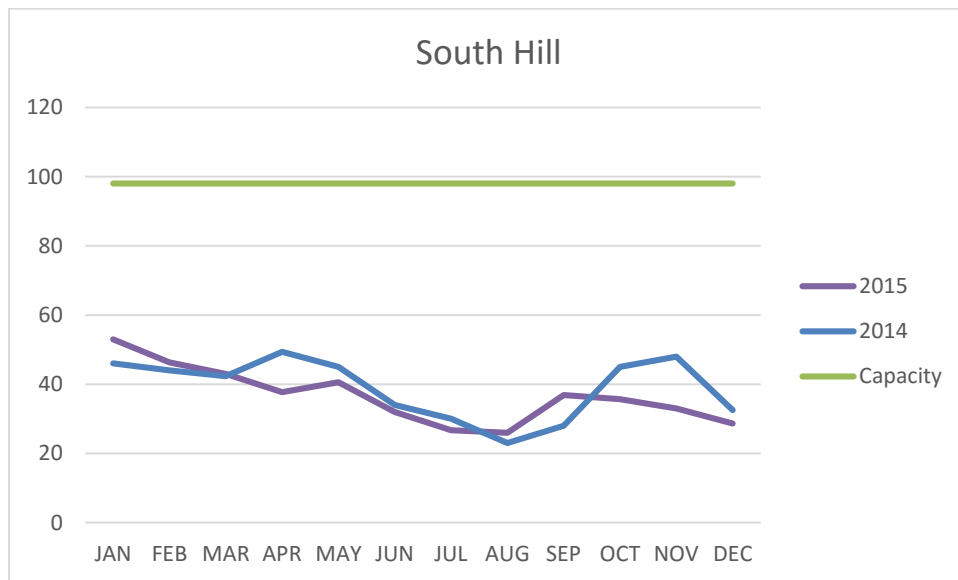


**South Hill Park and Ride**

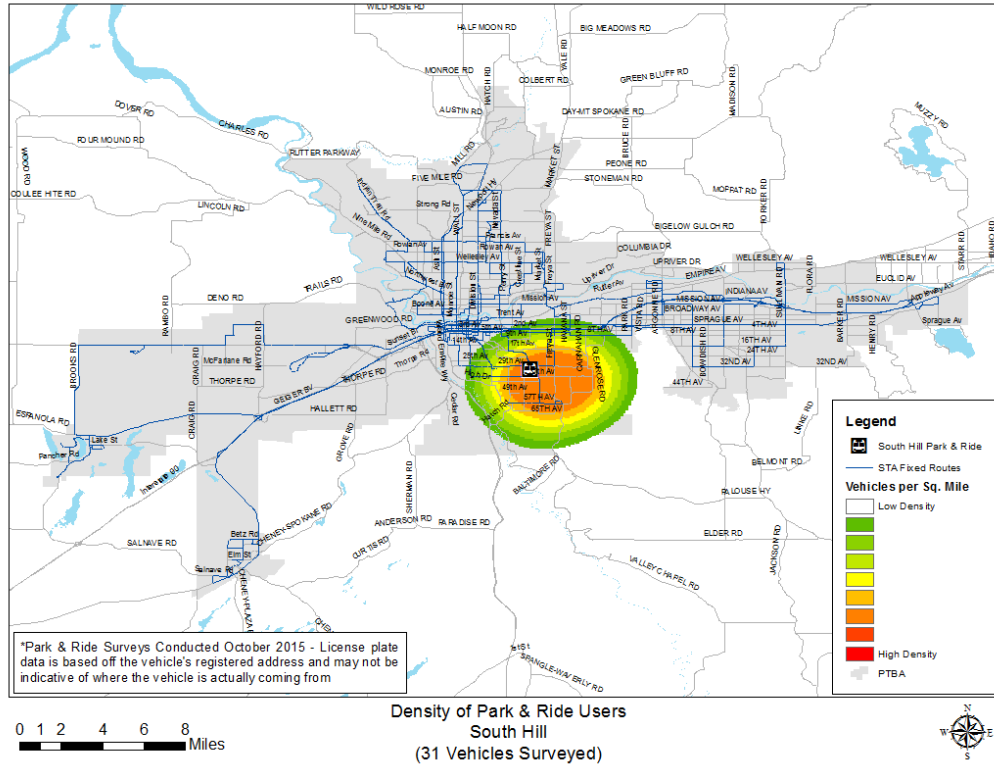
City	Location	Available Parking Spaces
Spokane	31 <sup>st</sup> Avenue and Southeast Boulevard	98

The South Hill Park and Ride is served by the Route 34 Freya, Route 43 Lincoln/37<sup>th</sup> Avenue, the Route 44 29<sup>th</sup> Avenue and the Route 45 Regal. The Route 43 offers thirty minute peak frequency and the Routes 34, 44 and 45 offer fifteen minute peak frequency. Hourly service is offered on nights and weekends.

Despite consistently low vehicle utilization of the South Hill Park and Ride, as a bus stop ridership remains strong with more than 300 boardings on an average weekday.



The origins of vehicles utilizing the park and ride maintain a strong density to the south and east of the park and ride along the Regal Street corridor as seen in the map on the following page.

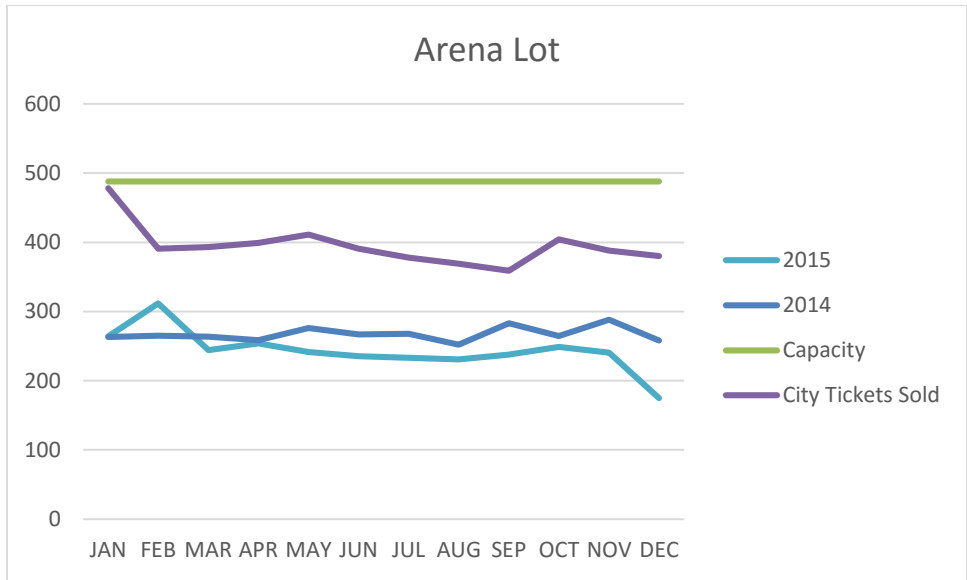


## Cooperative Facilities

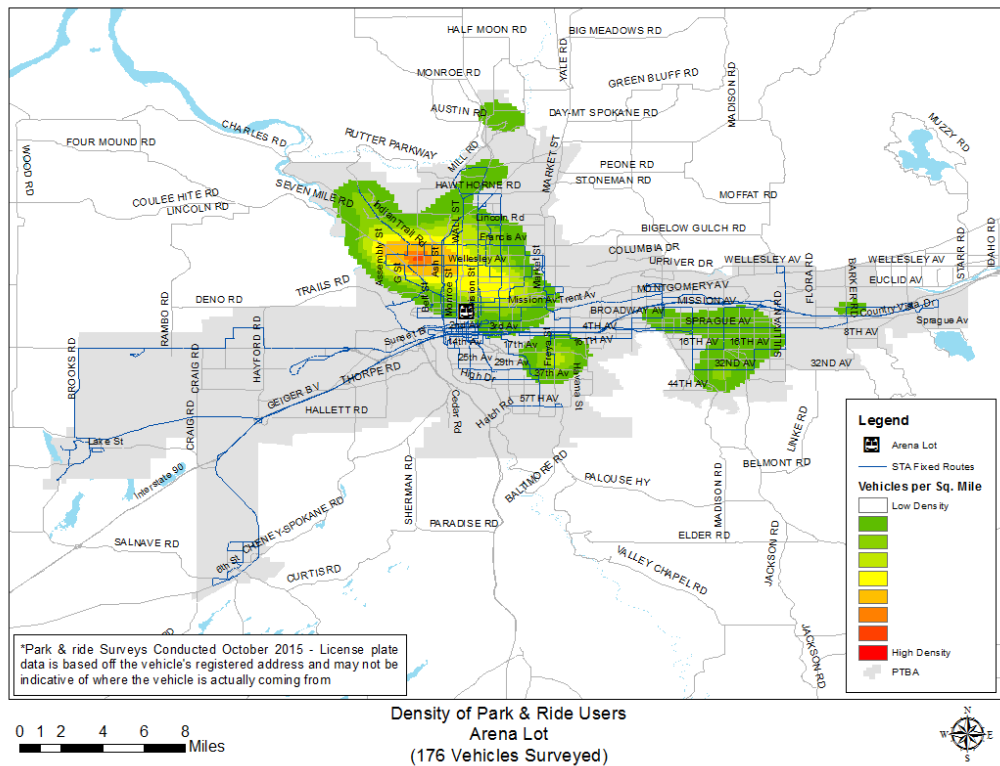
### Arena Lot

City	Location	Available Parking Spaces
Spokane	W Boone Avenue and Howard Street	488

The Arena Lot is served by the Route 1 Plaza/Arena shuttle which provides ten minute peak frequency on weekdays only. Customers who choose to park at the Arena Lot can pay the \$1.50 cash fare, purchase a \$3.50 day pass or purchase a monthly pass for \$30.00. The monthly pass provides unlimited travel on shuttle vehicles.



176 vehicles were recorded in the lot during the October 2015 license plate survey. As in previous years, the origin of vehicles utilizing the lot is generally from areas to the north and northwest of the park and ride. A notable number of vehicles also come from the Spokane Valley area south of the Interstate corridor.

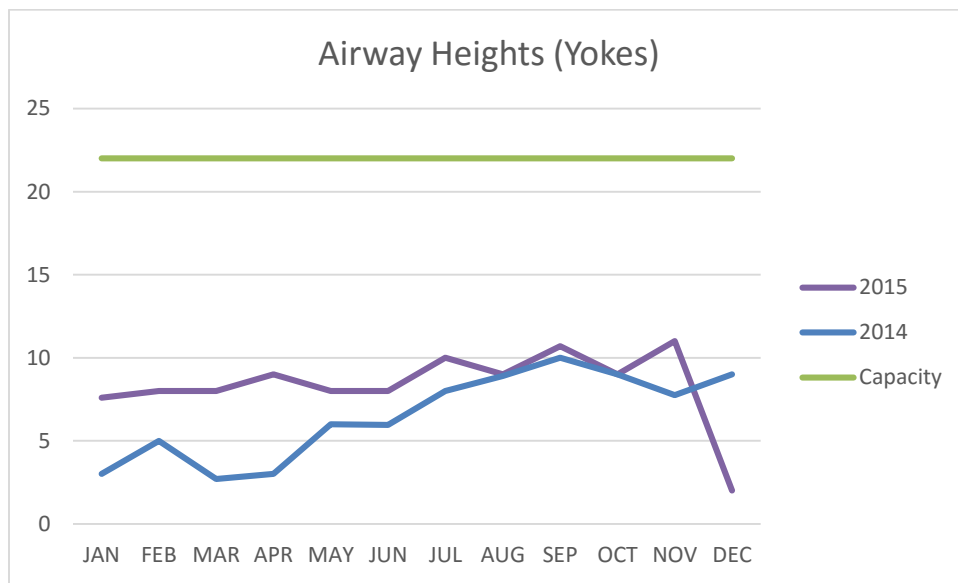


**Airway Heights Park and Ride**

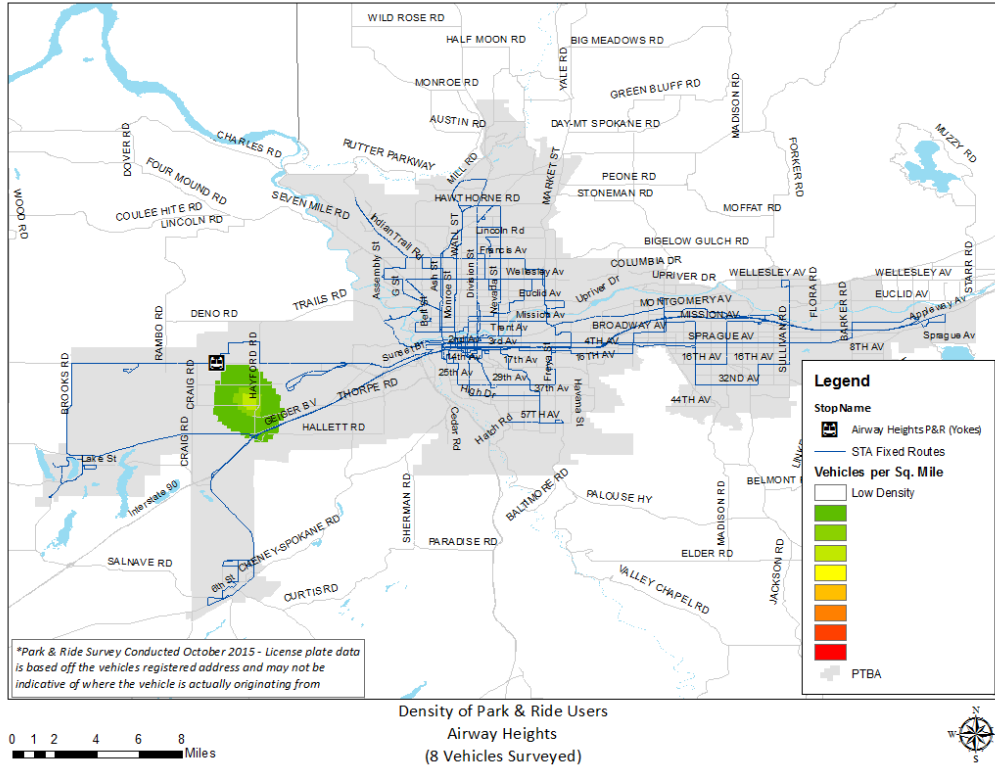
City	Location	Available Parking Spaces
Airway Heights	SR 2 (in front of Yoke’s Foods)	22

Airway Heights Park and Ride is served by the Route 61 Highway 2 via Browne’s Addition route which provides thirty minute peak frequency on weekdays and hourly service on nights and weekends.

As a bus stop, Airway Heights Park and Ride remains one of the busiest stops in Airway Heights with 65 boardings per average week day.



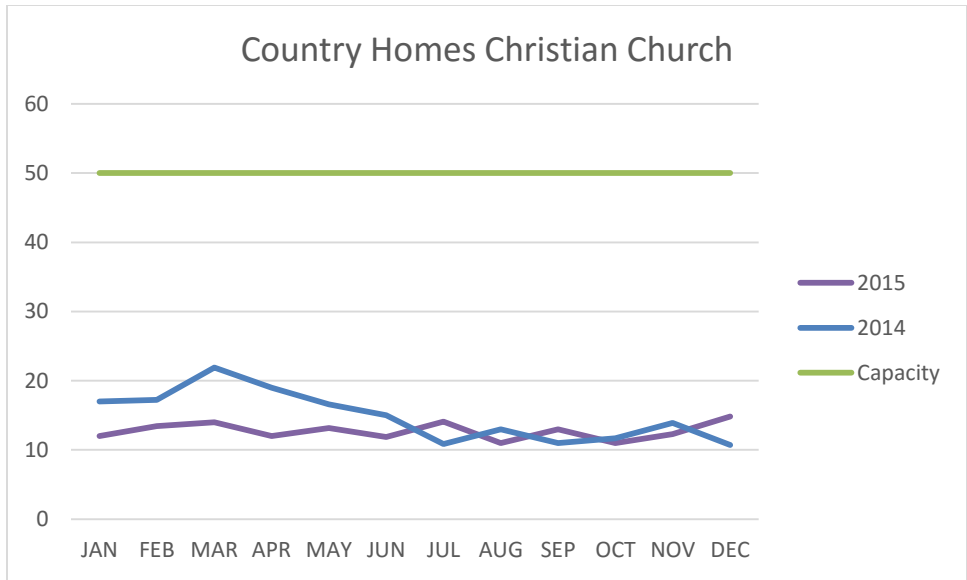
The October 2015 survey noted eight vehicles in the lot which is consistent with routine checks conducted of the lot each month.



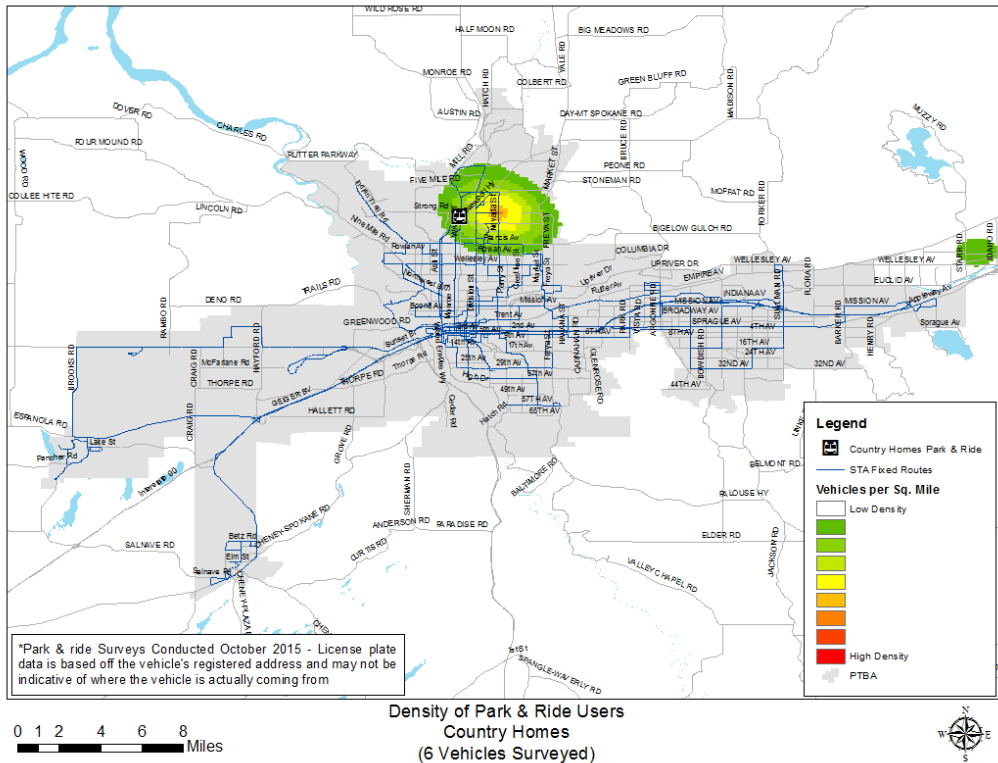
**Country Homes Christian Church**

City	Location	Available Parking Spaces
Spokane	Wall Street and Country Homes Boulevard	50

In cooperation with the Country Homes Christian Church, Spokane Transit offers 50 parking spaces to customers of the Route 124 North Express.



Average weekday boardings at the Country Homes Park and Ride were up slightly in 2015 with 12 boardings per average weekday compared to 11 in 2014. The origin location of vehicles utilizing the lot is noted in the map below.

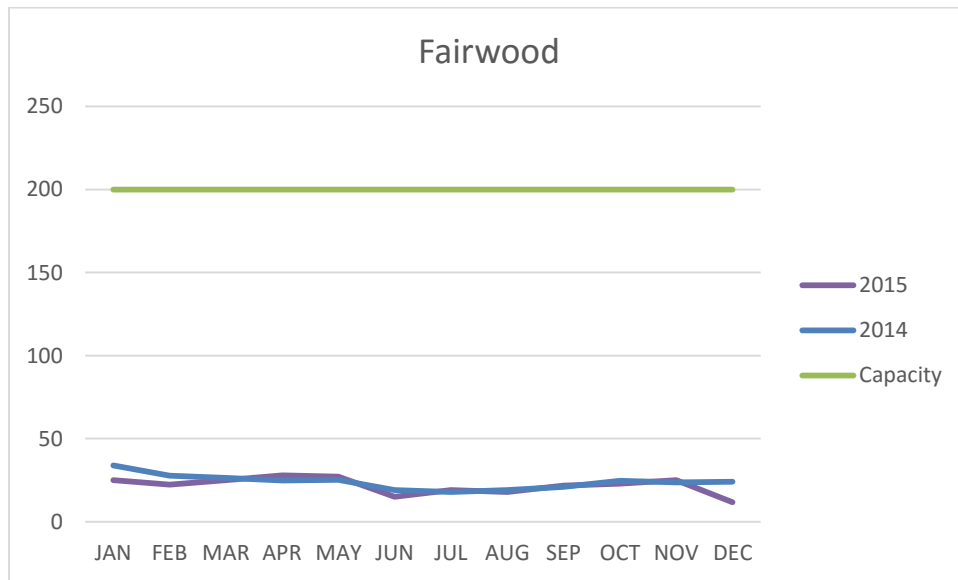


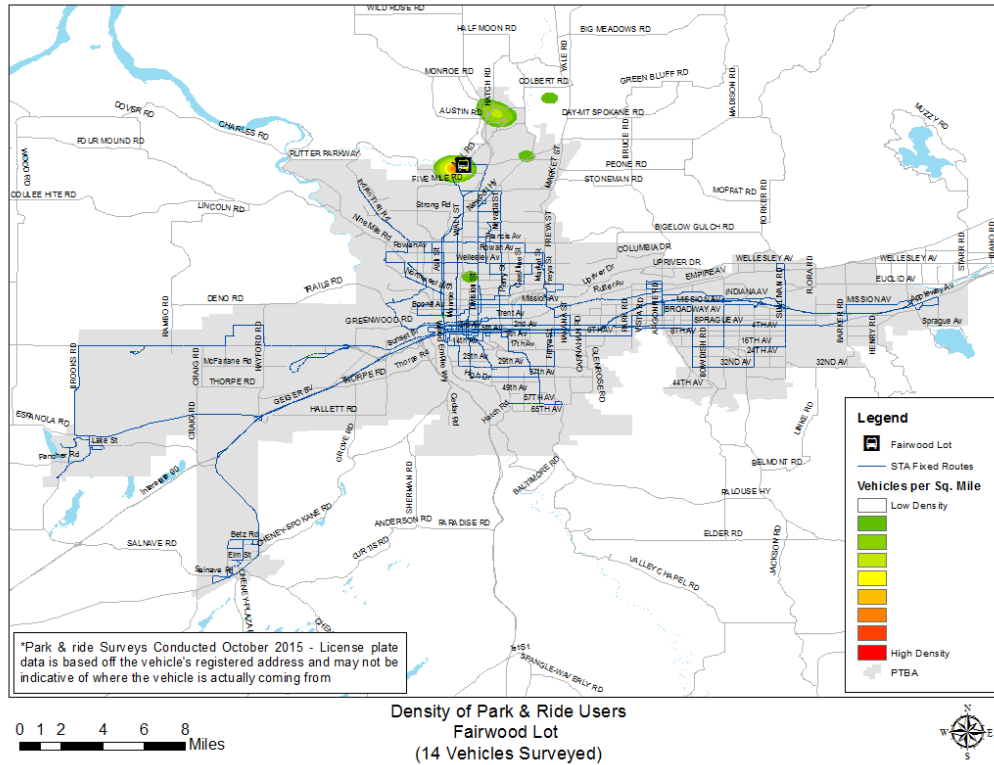
**Fairwood Lot**

<b>City</b>	<b>Location</b>	<b>Available Parking Spaces</b>
Spokane	511 W. Hastings Road	200

Fairwood Lot is served by the Route 124 North Express on weekdays only. Parking at Fairwood Lot is made possible via a lease agreement with The Calvary Chapel and lot serves as an overflow lot for the Hastings Park and Ride. The lot has ample capacity with space for up to 200 vehicles.

Average weekday boardings on the Fairwood lot dipped slightly compared to 2014 with 52 boardings on an average weekday.





## Bike Lockers

Spokane Transit provides bike lockers at certain park and ride lots for customers who wish to ride their bike as well as access the fixed route system. All Spokane Transit buses have the capability of holding two bicycles on racks mounted on the front of the bus.

Bike lockers can be rented on a monthly basis by contacting Spokane Transit Customer Service. Customers pay an initial fee of \$40.00 which includes a refundable \$25.00 key deposit and the first three (3) months of rental. Each additional month costs \$5.00.

Location	Total Bike Lockers Available	Total Bike Lockers Rented
Five Mile Park & Ride	6	1
Hastings Park & Ride	5	2
Jefferson Park & Ride	6	1
Liberty Lake Park & Ride	13	2
Mirabeau Point Park & Ride	6	2
South Hill Park & Ride	2	0
Valley Transit Center	12	1



# Appendix

## Table I - 2015 Weekday Boarding Activity by Stop

Data shown is based on TMP surveys conducted during 2015. During onboard surveys, boarding and alighting activity is recorded at each stop along the given route. The data in the table below shows the combined boarding activity of all routes that serve the stop. The IVR numbers shown correspond with the numbering system used for customer information.

IVR	Stop Name	DIR	Boards	Alights	Location Type
3264	Plaza Zone 7		2,387	1,383	Plaza
2740	EWU PUB		1,763	1,500	Transit Center
3185	Plaza Zone 4		1,459	1,174	Plaza
2632	Plaza Zone 8		1,382	987	Plaza
3209	Valley Transit Center		1,375	1,220	Transit Center
3168	Plaza Zone 2		1,337	0	Plaza
1603	Plaza Zone 5		1,303	992	Plaza
3132	Plaza Zone 6		1,215	650	Plaza
3246	Plaza Zone 3		1,043	775	Plaza
3204	Spokane Community College		922	803	Transit Center
3133	Plaza Zone 9		820	1,115	Plaza
2781	Plaza Zone 1		735	641	Plaza
2191	Leave @ Jefferson Lot	OB	602	22	Park & Ride
3981	Riverside @ Post		593	172	
2803	Mirabeau Point Park & Ride		559	492	Park & Ride
4087	Plaza @ Wall St S		449	86	Plaza
3159	Hastings Park & Ride		352	256	Park & Ride
2817	Liberty Lake Park & Ride		324	220	Park & Ride
3998	South Hill Park & Ride		312	344	Park & Ride
1135	Spokane Falls Community College		280	125	Shelter
2732	Betz @ Al Ogdon Way	OB/CCW	250	137	Shelter
1291	5 Mile Park & Ride		232	333	Park & Ride
1005	Arena Lot		213	99	Park & Ride
1583	Division @ Hoffman	IB	212	107	Shelter
2723	Elm @ C Street	CCW	198	2	Shelter
2731	Betz (turnout) @ SR 904	CCW	194	55	Shelter
1052	Lincoln @ Spokane Falls Blvd	OB	189	21	
1526	Division @ Wellesley (Northtown)	OB	177	237	Shelter

IVR	Stop Name	DIR	Boards	Alights	Location Type
4083	Sprague @ Hayford (CASINO)	IB	163	4	Shelter
1499	Monroe @ Montgomery	IB	155	35	
2987	Sprague @ Custer	IB	150	35	
3309	Monroe @ Broadway	OB	145	249	
2072	Wellesley @ Belt	EB	145	102	
1503	Monroe @ Maxwell	IB	145	37	
1084	Spokane Falls Community College	EB	141	304	Shelter
3438	Monroe @ Broadway	IB	134	95	Shelter
1501	Monroe @ Nora	IB	132	38	
1570	Division @ Price	IB	131	9	
1507	Riverside @ Browne	OB	124	30	
1569	Newport Highway @ N 9305	IB	123	13	
2049	Wellesley @ Division (Northtown)	WB	121	126	Shelter
1456	Monroe @ Wellesley	IB	117	29	Shelter
1944	Trent @ Perry (Social Security)	IB	116	13	
2865	Sprague @ Havana	OB	116	129	
2989	Sprague @ Havana	IB	110	87	
2968	Sprague @ Farr (Winco)	IB	110	44	Shelter
1505	Riverside @ Washington	OB	109	1	
1200	Broadway @ Maple	IB	109	3	Shelter
1952	Sprague @ Browne	IB	109	245	
4219	Plaza @ Wall St N	IB	107	370	
2108	Havana @ Sprague Southbound	SB	104	0	
3861	Sprague @ Browne	OB	103	90	
2083	Wellesley @ Division	EB	100	143	
2434	Regal @ 37th	IB	99	5	
3980	Valley Transit Center	OB	97	0	
2525	Chandler @ Hartson	IB	94	33	
1577	Division @ Dalke	IB	93	38	
2060	Wellesley @ Belt	WB	90	112	
1405	Monroe @ Indiana	OB	90	249	
1575	Division @ Lyons	IB	90	14	
2964	Sprague @ University	IB	87	1	
3000	Sprague @ Napa	IB	87	35	
1506	Riverside @ Bernard	OB	85	23	
1573	Division @ Rhoades	IB	84	24	
3886	Perry @ 8th	IB	83	23	Shelter
3257	5th @ Thor	IB	82	22	Shelter
1197	Broadway @ Nettleton	IB	82	0	

IVR	Stop Name	DIR	Boards	Alights	Location Type
1594	Division @ Nora	IB	81	58	
3127	Spruce @ 2nd	IB	80	8	Shelter
3002	Sprague @ Helena	IB	79	61	
2628	Hwy 2 @ Hayford (Walmart)	IB	79	5	Shelter
1840	Northeast Community Center	IB	77	27	Shelter
1408	Monroe @ Carlisle	OB	77	344	Shelter
2208	Walnut @ 5th (Jefferson Lot)	IB	77	744	
2724	Elm @ 7th	IB/CW	77	2	
3307	Monroe @ Summit	IB	75	46	
2149	Pacific @ Oak	IB	75	11	
3986	Veterans Hospital	IB	75	66	Shelter
1209	Boone @ Spokane Transit Authority	IB	75	14	
2429	Regal @ 53rd	IB	74	2	Shelter
1578	Division @ Central	IB	74	12	
3974	Monroe @ Gardner	IB	72	41	Shelter
1571	Division @ Cascade	IB	70	20	
1713	Leave Hoerner @ Colton	IB	69	34	
2958	Sprague @ Pines	IB	69	31	
1459	Monroe @ Garland	IB	68	13	
1602	Stevens @ Sprague	IB	68	36	
4121	Betz @ Washington (Eagle Point)	OB/CCW	67	45	
2190	3rd @ Cedar	IB	66	28	
1831	Wellesley @ Lacey	IB	66	21	
3189	Havana @ Sprague	NB	65	44	
2560	Airway Heights P&R (Yokes)	IB	65	0	Park & Ride
1403	Monroe @ Maxwell	OB	64	208	
2206	Walnut @ 7th	IB	64	11	Shelter
2343	Garfield @ 30th Ave (Manito Cente	IB	63	34	
1987	Francis @ Monroe	IB	63	8	
1580	Division @ Rowan (Franklin Park)	IB	63	21	Shelter
1273	Ash @ Sharp	IB	63	24	
3224	K Street Station	CCW	63	49	Park & Ride
3003	Sprague @ Ivory	IB	63	22	
2436	Southeast Blvd @ Regal	IB	63	4	
3126	Wellesley @ Ash	EB	62	27	Shelter
3262	Fort George Wright @ Randolph	IB	61	28	
2427	Regal @ 57th	IB	61	0	
2970	Sprague @ Mullan	IB	60	14	Shelter
1585	Division @ Garland	IB	60	30	Shelter

IVR	Stop Name	DIR	Boards	Alights	Location Type
2430	Regal @ Palouse Hwy	IB	59	4	
2095	Wellesley @ Haven	EB/OB	58	75	Shelter
1194	A Street @ Broadway	IB	58	0	
1515	Ruby @ Indiana	OB	57	90	Shelter
1509	Division @ Spokane Falls Bl.	OB	56	32	
2993	Sprague @ Freya	IB	55	31	
1590	Division @ Buckeye	IB	55	34	
3888	Newark @ Richard Allen Ct	IB	54	11	
2115	Thor @ 5th	SB	54	31	
3620	Nevada @ Lyons	IB	54	5	
1417	Monroe @ Wellesley	OB	53	197	
4009	Indiana @ E. 12410 Sounds on Wheels	IB	53	18	
3081	Mission @ Regal	IB	53	2	
2980	Sprague @ Thierman	IB	53	15	
1310	Hastings @ Fairwood Center	IB	52	40	Park & Ride
1595	Division @ Mission	IB	52	37	
2998	Sprague @ Altamont	IB	51	35	
1546	Hawthorne @ Division	IB	51	16	
2291	Adams @ 6th	IB	51	1	
2946	Sprague @ Sullivan	IB	51	25	
1514	Ruby @ Augusta	OB	51	63	
1272	Ash @ Maxwell	IB	50	29	
2037	Wellesley @ Haven	WB	50	32	
3161	Wiscomb @ Wedgewood (Lilac Plaza)	IB	49	9	Shelter
3785	Wellesley @ Monroe	WB	49	51	
1462	Monroe @ Frederick	IB	49	2	
3622	3rd @ Washington	OB	49	42	
1592	Division @ Montgomery	IB	48	21	
3852	2nd @ Arthur	IB	48	22	
1269	Ash @ Indiana	IB	48	10	
1461	Monroe @ Dalton	IB	48	13	
3841	5th @ Stone E Central CC	IB	48	16	
3781	Market @ Garland	EB	48	40	
4159	Spokane Falls Blvd @ WSU School o	IB	47	22	
2078	Wellesley @ Monroe	EB	47	64	
1587	Division @ Courtland	IB	45	28	
2047	Wellesley @ Addison	OB	45	39	Shelter
1154	Boone @ Maple	IB	45	6	
4081	Sunset @ Government Way	IB	44	14	Shelter

IVR	Stop Name	DIR	Boards	Alights	Location Type
2640	Sunset @ Lewis	IB	44	18	
1596	Division @ Sharp	IB	44	24	
2384	8th @ McClellan	IB	43	1	
2085	Wellesley @ Addison	EB	43	50	
1919	Greene @ Mission	EB	43	18	
2044	Wellesley @ Nevada	WB	43	34	
1391	Ash @ Wellesley	IB	43	34	
2908	Sullivan @ Broadway	OB	42	36	
2857	Sprague @ Altamont	OB	42	60	
1198	Broadway @ Cannon	IB	42	9	
2725	6TH STREET @ ELM	IB/CW	42	4	
1614	Hamilton @ Mission	OB	42	52	
1497	Monroe @ Grace	IB	42	6	
1736	Addison @ Lyons	IB	42	6	Shelter
2088	Wellesley @ Nevada	EB	41	35	
3060	Pacific @ Cannon	IB	41	3	Shelter
1664	Hamilton @ Mission	IB	41	37	
1027	Sacred Heart Medical Building	IB/OB	41	35	
1394	Ash @ Garland	IB	41	3	Shelter
1399	Ash @ Northwest Blvd.	IB	41	13	
2727	6th @ W 440 Cheney HS	IB/CW	40	11	
2878	Appleway @ Park	OB	40	23	
1874	Washington @ Sinto	IB	39	17	
1846	Crestline @ North Foothills	IB	39	5	
2062	Wellesley @ Alberta	WB	39	22	
1076	Riverside @ Hemlock (Broadmoor Apts)	OB	39	25	
3944	Mansfield @ Pines	WB	39	11	
2853	Sprague @ Helena	OB	39	70	
4028	Ash @ Mallon	IB	38	15	
1096	Driscoll @ Hoffman	EB	38	16	
4088	Lib Lk Rd @ Country Vista	IB	38	0	
1566	Newport Highway @ Graves	IB	38	1	
2893	Sprague @ Pines	OB	38	41	
4183	Hamilton @ Cataldo	IB	37	13	Shelter
3854	2nd @ Sherman	IB	37	11	
2643	Sunset @ Rustle	IB	37	1	Shelter
1411	Monroe @ Frederick	OB	37	90	
3083	Mission @ Cook	IB	36	6	
2467	Southeast Blvd @ 29th	IB	36	7	

IVR	Stop Name	DIR	Boards	Alights	Location Type
2887	Sprague @ University	OB	36	1	
1564	Hawthorne @ Newport Highway	IB	35	3	
2038	Wellesley @ Crestline	WB	35	16	
3263	Riverside @ Hemlock (Broadmoor Apts)	IB	35	18	
1533	Division @ Francis	OB	35	99	
1516	Ruby @ Montgomery	OB	35	28	
3539	Cook @ Rich	IB	35	13	
2644	Sunset @ Lindeke	IB	35	10	
1655	Nevada @ Gordon	IB	35	1	
1572	Division @ Cozza	IB	35	12	
2985	Sprague @ Light Entrance to Costco	IB	35	24	
3006	Sprague @ Sheridan	IB	35	10	
3340	Monroe @ Boone	OB	34	198	
1412	Monroe @ Dalton	OB	34	101	
1826	Haven @ Diamond	IB	34	7	
1047	5th @ Wall	IB	34	5	
2361	29th @ Regal	SB	34	13	
1662	Hamilton @ Illinois	IB	34	15	
1628	Nevada @ Wellesley	OB	33	29	
3623	3rd & Pine	OB	33	81	
2092	Wellesley @ Pittsburg	EB	33	56	
1001	Wall @ Riverside	OB	33	1	
1825	Rowan @ Haven	IB	33	3	
2218	10th @ Madison	OB	33	31	
2365	29th @ Stone	IB	33	0	
3619	Nevada @ Cozza	IB	33	5	
1599	Division @ North River Drive	IB	33	24	
2884	Appleway @ Farr (Winco)	OB	32	113	Shelter
3837	5th @ Haven	IB	32	1	Shelter
3089	Mission @ Hamilton	IB	32	29	
3001	Sprague @ Pittsburg	IB	32	12	
3855	2nd @ Cowley	IB	31	23	
2286	14th @ Madison	IB	31	8	
1763	Washington @ Mission	OB	31	60	
3039	Pacific @ Hemlock	IB	31	8	
2995	Sprague @ Greene	IB	31	5	
2431	Regal @ 44th	IB	31	0	
1597	Division @ Boone	IB	31	18	
2867	Sprague @ Custer	OB	30	140	

IVR	Stop Name	DIR	Boards	Alights	Location Type
2869	Sprague @ Carnahan	OB	30	42	Shelter
2905	Sullivan @ Sprague	OB	30	24	
1519	Division @ Bridgeport	OB	30	58	
1217	Maple @ Maxwell	OB	30	37	
2710	Washington @ 3rd	OB/CW	30	10	Shelter
1852	Division @ 6th Ave	IB	30	1	
1460	Monroe @ Kiernan	IB	30	4	
2991	Sprague @ Julia	IB	29	9	Shelter
2084	Wellesley @ Lidgerwood	EB	29	25	
3984	Arrive @ Jefferson Lot	OB	29	11	
3396	Sullivan @ 4th	OB	29	10	
2210	Stevens @ 4th	OB	29	20	
2539	Leave SIA Concourse A	IB	29	0	Shelter
1616	Hamilton @ Illinois	OB	29	32	
2516	Perry @ 11th	IB	29	5	
1203	Courthouse (Broadway @ Madison)	IB	29	27	
1195	Broadway @ Lindeke	IB	29	0	
3792	Lincoln @ 2nd	IB	29	66	
1568	Newport Highway @ Holland	IB	28	0	
2976	Sprague @ Park	IB	28	18	
3398	Indiana @ Hanson Cntr Signal Light	IB/OB	28	8	
2770	1st @ Cheney Spokane Rd.	IB/CCW	28	20	Shelter
4110	Cedar @ 8th	IB	28	4	
3086	Mission @ Marshall	IB	28	7	
1517	Ruby @ Jackson	OB	28	60	
3015	Mission @ Hamilton	OB	28	28	
2846	Sprague @ Division	OB	28	67	
3299	Rowan @ Driscoll	IB	28	9	
1263	Northwest Blvd @ Hemlock	IB	28	0	
1584	Division @ Longfellow	IB	27	8	
2915	Sprague @ Sullivan	OB	27	62	
2955	Sprague @ McDonald	IB	27	6	
2952	Sprague @ Evergreen	IB	27	11	
4200	Sprague @ Haven	IB	27	13	
1397	Ash @ Grace	IB	27	4	
2874	Appleway @ Theirman	OB	26	55	
3490	Pines @ Sprague	OB	26	24	
1071	Sprague @ Jefferson	OB	26	16	Shelter
2949	Sprague @ Adams	IB	26	2	

IVR	Stop Name	DIR	Boards	Alights	Location Type
4085	Cannon @ Sunset	OB	26	27	
3743	Montgomery @ Argonne	EB	26	12	
1201	Broadway @ Cedar	IB	26	7	
1162	Courthouse (Broadway @ Madison)	OB	26	55	
3085	Mission @ Crestline	IB	26	14	Shelter
2567	Hayford @ 9th Av	IB	26	9	
1796	Northeast Community Center	OB	26	61	
1410	Monroe @ Grace	OB	26	69	
4039	Wellesley @ Ash	WB	26	51	
1644	Nevada @ Central	IB	26	0	
1647	Nevada @ Everett	IB	26	5	
1646	Nevada @ Rowan	IB	26	2	
1045	6th @ Stevens	IB	26	6	
2966	Sprague @ Felts	IB	26	1	Shelter
3977	Argonne @ Montgomery	IB	26	2	
1665	Hamilton @ Sharp	IB	26	10	
3248	3rd @ Cowley	OB	25	46	
2368	29th @ Pinecrest	IB	25	14	
2359	29th @ Ray	SB	25	6	
2150	Pacific @ Maple	IB	25	9	
2849	Sprague @ Sherman	OB	25	72	
2812	Molter @ Meadowood Tech Park	IB/OB	25	32	Shelter
1604	Washington @ Main	OB	25	3	
1537	Division @ Weile	OB	25	81	
1939	Napa @ Cataldo	IB	25	7	
3096	Division @ 5th	IB	25	0	
1007	Washington @ North River Drive	IB	25	13	
2051	Wellesley @ Whitehouse	WB	24	5	
1184	Pettit @ Augusta WCCC	IB/OB	24	24	Shelter
3004	Sprague @ O'Keefe Bridge Overpass	IB	24	14	
3302	Division @ Queen	IB	24	50	
1725	Nevada @ St. Thomas Moore Way	IB	24	0	
2855	Sprague @ Napa	OB	24	63	
1917	Greene @ Jackson	EB/OB	24	16	
1720	Magnesium @ Hill n' Dale	IB	24	1	
1741	Lidgerwood @ Columbia (Holy Family)	IB	24	9	Shelter
1737	Addison @ Francis	IB	24	9	Shelter
1285	Maple @ Wellesley	OB	24	40	
1871	Washington @ Nora	IB	24	22	



IVR	Stop Name	DIR	Boards	Alights	Location Type
1414	Monroe @ Garland	OB	24	114	
4077	Nevada @ Hoerner (Winco)	IB	23	0	
1653	Nevada @ Empire	IB	23	7	
1950	Spokane Falls Blvd @ WSU School o	OB	23	35	
2974	Sprague @ Vista	IB	23	10	
2978	Sprague @ Coleman	IB	23	9	
2145	4th @ Hemlock	IB/OB	23	29	
2298	Stevens @ 6th	OB	23	31	Shelter
2847	Sprague @ Cowley	OB	23	30	
2862	Sprague @ Freya	OB	23	72	
1937	Napa @ Sinto	IB	23	5	
1938	Napa @ Boone	IB	23	8	
3687	Empire @ Nevada	IB	23	4	
1150	Monroe @ 1st	OB	23	0	
3856	2nd @ Browne	IB	23	39	
1199	Broadway @ Oak	IB	22	0	
1191	A Street @ Boone	IB	22	0	
1070	Sprague @ Monroe	OB	22	1	
3791	3rd @ Jefferson	IB	22	19	
4236	McKeehan Way @ Washington	OB/CW	22	0	
2040	Wellesley @ Pittsburg	WB	22	27	
2031	Market @ Euclid	WB	22	12	
2070	Wellesley @ Alberta	EB	22	41	
1521	Division @ Empire	OB	22	62	
1859	Illinois @ Hamilton	IB	22	18	
2851	Sprague @ O'Keefe Bridge Overpass	OB	22	28	
2852	Sprague @ Ivory	OB	22	47	
3289	Perry @ 9th Avenue	OB	22	75	Shelter
1657	Nevada @ Dalton (Gonzaga Prep)	IB	22	0	
3011	Mission @ Division	OB	21	16	
3061	Trent @ Bessie (DSHS)	WB	21	6	Shelter
3783	Freya @ 5th	NB	21	23	
1392	Ash @ Longfellow	IB	21	2	
3601	Nevada @ Magnesium	IB	21	0	
1649	Nevada @ Wellesley	IB	21	44	
2542	Hayford @ Hwy 2 (Walmart)	OB	21	70	
3779	TJ Meenach @ Northwest Blvd	EB	21	12	
3087	Mission @ Upriver Drive	IB	21	0	
3661	Assembly @ Sanson	IB	21	1	

IVR	Stop Name	DIR	Boards	Alights	Location Type
2911	Sullivan @ 819 N (McDonalds)	IB	21	7	
2016	Spokane Falls Blvd @ Cincinnati	IB	21	22	
1994	Francis @ Addison	IB	21	13	
1992	Francis @ Division	IB	21	5	
1868	Indiana @ Ruby	IB	21	20	
2840	Mission @ Mullan	IB	20	8	
1083	Fort George Wright @ Randolph	OB	20	46	
3325	Wall @ Country Homes Bl (CHURCH)	IB	20	0	Park & Ride
2378	Grand @ 14th Avenue	IB	20	3	Shelter
3252	Greene @ Jackson	OB/WB	20	17	
3950	Argonne @ Knox	IB	20	0	
3834	5th @ Freya	IB	20	4	
2767	1st @ Pine	IB/CCW	20	3	Shelter
2195	Maple @ 2nd	OB	20	20	
1190	A Street @ Sinto	IB	20	0	
2079	Wellesley @ Wall	EB	20	11	
1004	Howard @ Gardner	OB	20	56	Shelter
3470	Division @ Longfellow	OB	20	48	
2267	37th @ Latawah	IB	20	6	
2910	Sullivan @ Mission	IB	20	24	
1965	Francis @ Pittsburg	OB	20	26	
1843	Crestline @ Gordon	IB	20	1	
2000	Francis @ Crestline	IB	20	13	
2034	Market @ Garland	WB	20	37	
3853	2nd @ Hatch	IB	20	9	
4218	Pines @ Broadway	IB	19	2	
3559	Pines @ Maxwell	IB	19	5	
1913	Euclid @ Thor	OB	19	8	
3665	Alberta @ Central	IB	19	3	
1663	Hamilton @ Indiana	IB	19	7	
2983	Sprague @ Howe	IB	19	4	
2997	Sprague @ Lacey	IB	19	5	
2689	1st @ College Hill	OB/CW	19	28	
3400	Indiana @ Valley Mall (Black Angus)	IB/OB	19	15	Shelter
3124	Fairchild @ Front Gate	IB/OB	19	23	
2959	Sprague @ Perrine	IB	19	5	
4167	Broadway @ Argonne	IB	19	6	
3821	8th @ Eastern	IB	19	6	
3192	Park @ Broadway	IB	19	1	

IVR	Stop Name	DIR	Boards	Alights	Location Type
3632	5th @ Stone E Central CC	OB	19	42	Shelter
1953	Sprague @ Bernard	IB	19	69	
1607	Ruby @ Sharp	OB	19	52	
1529	Division @ Rowan	OB	19	62	
2566	Hayford @ 12th Av	IB	19	16	
1767	Indiana @ Division	OB	19	13	
2630	Hwy 2 @ Flint (Triumph)	IB	19	10	
1818	Crestline @ Dalke	IB	19	4	
1955	Haven @ Wellesley	IB	19	18	
2203	Cedar @ 12th	IB	18	2	
4206	Wall @ 4th	IB	18	7	
2352	29th @ Southeast Blvd	NB	18	8	
3016	Mission @ Superior	OB	18	8	
2342	29th @ Grand	OB	18	66	
2814	Appleway @ Molter	IB/OB	18	10	
2344	31st @ Grand Bl	IB	18	11	
1613	Hamilton @ Sharp	OB	18	42	
1735	Addison @ Lyons	IB	18	5	
2087	Wellesley @ Cincinnati	EB	18	16	
2073	Wellesley @ Cannon	EB	18	6	
1535	Division @ Lyons	OB	18	85	
1875	Washington @ Boone	IB	18	24	
3208	Francis @ Division	OB	18	28	
2914	Sullivan @ Sprague	IB	18	38	
3537	Cook @ Hoffman	IB	18	0	
1823	Rowan @ Lacey	IB	18	5	
1867	Indiana @ Lidgerwood	IB	18	10	
1151	Monroe @ 2nd	OB	17	33	
1247	Wellesley @ Gustavus	IB	17	0	
4090	Sullivan @ Kiernan	IB	17	0	
3771	Trent @ Dale	WB	17	15	
3012	Mission @ Ruby	OB	17	9	
1832	Wellesley @ Cook	WB	17	2	
1562	Hawthorne @ Mayberry	IB	17	5	
3306	Monroe @ Bridge	OB	17	50	
1805	Wellesley @ Lacey	EB	17	39	
4000	Betz Rd @ Normal Park	IB/CW	17	130	
2435	Regal @ 35th	IB	17	13	
2726	6th @ Oak	IB/CW	17	2	

IVR	Stop Name	DIR	Boards	Alights	Location Type
2362	29th @ Mt Vernon	SB	17	17	
1660	Hamilton @ Jackson	IB	17	10	
1762	Washington @ Sinto	OB	17	25	
3831	5th @ Florida	IB	17	1	
3058	Argonne @ Trent	IB	17	0	
2982	Sprague @ Fancher	IB	17	12	
2832	University @ Main	IB	17	1	
2094	Wellesley @ Crestline	EB	17	29	
3406	Sullivan @ 4th	IB	17	20	
3433	Pines @ 32nd (U HIGH)	IB	17	9	
1947	Riverpoint @ Spokane Falls Blvd	IB	17	1	Shelter
1968	Francis @ Nevada	OB	17	20	
4195	Crestline @ Joseph	IB	17	4	
1993	Francis @ Lidgerwood	IB	17	6	
2017	Spokane Falls Blvd @ Cincinnati	OB	16	29	
3599	9671 N Nevada	IB	16	0	
3569	Pines @ 10th	IB	16	10	
3940	Mansfield @ Perrine	WB	16	1	
3760	Mansfield @ Wilbur	WB	16	6	
1906	Myrtle @ Marietta	OB	16	15	
3744	Montgomery @ Argonne Village	EB	16	9	
3216	Fairchild @ BX 101 Spaatz Rd	OB	16	22	
3885	Manfield @ Pines	EB	16	36	
2535	Sunset @ Lewis	OB	16	56	
1015	5th @ Deaconess Hospital	IB	16	2	
1759	Francis @ Addison	IB/OB	16	28	
2042	Wellesley @ Perry	WB	16	16	
2376	Grand @ 18th	IB	16	2	
1149	1st @ Jefferson	IB	16	26	
3076	Cannon @ 4th	IB	16	27	
1267	Ash @ Montgomery	IB	16	10	
2101	Market @ Euclid	EB	16	21	
4235	Buckeye @ Dale	IB/OB	16	3	
3858	5th @ Thor	OB	16	74	
3084	Mission @ Stone	IB	16	3	
1531	Division @ Central	OB	16	79	
4190	Illinois @ Dakota	IB	15	1	
1821	Rowan @ Stone	IB	15	2	
1842	Crestline @ Providence	IB	15	2	Shelter

IVR	Stop Name	DIR	Boards	Alights	Location Type
3982	Appleway @ Barker	IB	15	0	
4022	Cowley @ 9th Ave	IB	15	0	
3009	Sprague @ Cowley	IB	15	40	
2354	29th @ Regal	NB	15	39	
2615	Lidgerwood @ Rowan	IB	15	3	
2618	Lidgerwood @ Olympic/Wabash	IB	15	30	
2831	SIA Concourse C	IB	15	30	Shelter
2771	1st @ College Hill	IB/CCW	15	8	
3770	Montgomery @ Argonne	WB	15	18	
2758	1st @ W 800	IB	15	0	
2611	Lidgerwood @ Wabash	OB	15	23	
2690	1st @ Cheney Spokane Rd.	OB/CW	15	31	
1554	Newport Highway @ N 9222	OB	15	157	
1527	Division @ Queen	OB	15	21	
1510	Division @ North River Drive	OB	15	23	
1540	Division @ Lincoln	OB	15	74	
3310	Maple @ Maxwell	OB	14	31	
2266	37th @ Grand	IB	14	1	
1949	Riverpoint Higher Education Park	IB	14	3	Shelter
4032	North Foothills @ Pittsburg	IB	14	3	
1873	Washington @ Maxwell	IB	14	12	
3602	Argonne @ Mission	IB	14	4	
3242	Park @ Sprague	OB	14	12	
3843	5th @ Magnolia	IB	14	3	
2883	Appleway @ Dishman Mica	OB	14	36	
2468	Southeast Blvd @ 27th	IB	14	2	
1074	Riverside @ Elm	OB	14	9	
1454	Monroe @ Queen	IB	14	0	
2940	Sprague @ Flora	IB	14	0	
2956	Sprague @ 12805 E (DMV)	IB	14	1	
2931	Barker @ Boone	IB	14	4	
4097	14th @ Adams	IB	14	3	
2815	Appleway @ Madson	IB/OB	14	16	
2798	Indiana @ Hanson Center Eastbound	IB	14	27	
4109	Cedar @ 10th	IB	14	1	
4127	Betz @ Washington (Eagle Point)	IB/CCW	14	59	
3278	Whitworth College Shelter	IB	14	2	Shelter
3600	Nevada @ Holland	IB	14	2	
3769	Montgomery @ Argonne Village	WB	14	10	

IVR	Stop Name	DIR	Boards	Alights	Location Type
2779	SR 904 @ 1st (Four Lakes)	IB	14	12	
1366	Indian Trail @ Barnes	IB	14	1	
1739	Lidgerwood @ Dalke	IB	14	5	
2314	29th @ Latawah	IB	14	6	
2367	29th @ Pittsburg	IB	14	3	
1600	Spokane Falls Blvd @ Bernard	IB	14	74	Shelter
1656	Nevada @ Bridgeport	IB	14	9	
1615	Hamilton @ Indiana	OB	13	26	
2264	37th @ Arthur	IB	13	2	
1132	Alberta @ Northwest Blvd	WB	13	24	
1127	Driscoll @ Garland	WB	13	12	
3082	Mission @ Lacey	IB	13	1	
3162	Lawson @ 6th	IB	13	3	
3454	32nd @ University	IB	13	5	
4209	Perry @ Marietta	IB	13	1	
4108	Indiana @ Standard	IB	13	1	
1828	Haven @ Wabash	IB	13	3	
3874	Newark @ Laura	OB	13	47	
1038	Cowley @ Hartson (ST Lukes)	IB	13	1	
1204	Monroe @ Summit	IB	13	7	
2936	Appleway @ Corbin	IB	13	0	
4187	Indiana @ Evergreen	IB	13	14	
2761	1st @ G Street	IB/CCW	13	12	
2292	5th @ Jefferson	IB	13	0	
4208	Mission @ Calispel	OB	13	6	
3667	Rowan @ Alberta	IB	13	0	
3007	Sprague @ Sherman	IB	13	19	
2836	Mission @ University	IB	13	3	
1148	1st @ Cedar	IB	13	19	
3890	Arthur @ 5th	IB	13	4	
2514	Perry @ 15th	IB	13	4	
2469	Southeast Blvd @ Rockwood Blvd	IB	13	0	
2432	Regal @ Thurston	IB	13	0	
1092	Driscoll @ Garland	EB	12	10	
2069	Wellesley @ Milton	EB	12	4	
4112	37th @ Skyview	IB	12	3	
2204	Walnut @ 9th	IB	12	4	
1991	Francis @ Atlantic	IB	12	18	
1844	Crestline @ Courtland	IB	12	6	

IVR	Stop Name	DIR	Boards	Alights	Location Type
1041	5th @ McClellan	IB	12	0	
3313	Francis @ Cedar	IB	12	1	
4137	Broadway @ Ella	IB	12	4	
2011	Ray @ 15th	NB	12	15	
1457	Monroe @ Longfellow	IB	12	1	
1452	Monroe @ Rowan	IB	12	0	
2854	Sprague @ Pittsburg	OB	12	35	
1715	Spokane Falls @ Post	IB	12	47	
2742	C Street @ 5th	CCW	12	5	Shelter
3753	Mansfield @ Wilbur	EB	12	20	
2332	9th @ McClellan	OB	12	16	
1012	Stevens @ 2nd	OB	12	12	
2197	Maple @ 7th	OB	12	64	
4157	Sullivan @ Wellesley	IB	12	2	
3512	Mission @ PIG entrance	IB	12	3	
3222	Betz @ SR 904 (Cheney)	IB	12	0	
3618	Nevada @ Sharnsburg	IB	12	0	
3597	Hawthorne @ Nevada	IB	12	0	
1641	Nevada @ Francis	IB	12	2	
2381	8th @ Washington	IB	12	6	
2324	Bernard @ 18th	IB	12	0	
2316	29th @ Division	IB	12	0	
3594	Hawthorne @ Newport Hwy	IB	12	0	
1761	Washington @ Boone	OB	12	43	
1326	Waikiki @ Hawthorne	IB	11	5	
3500	Mission @ McDonald	OB	11	16	
4212	Ruby @ Desmet	OB	11	17	
1222	Northwest Blvd @ Maple	OB	11	43	
3128	Lawson @ 8th	IB	11	1	
3756	Indiana @ Valley Mall	IB	11	7	
1765	Washington @ Indiana	OB	11	27	
3543	Perry @ North Foothills	IB	11	2	
1855	North Center @ Illinois	IB	11	12	
1996	Francis @ Nevada	IB	11	7	
1999	Francis @ Pittsburg	IB	11	6	
2477	Rockwood Blvd @ Cowley	IB	11	0	
3833	5th @ Rebecca	IB	11	3	
3195	Park @ Sprague	IB	11	12	
1192	A Street @ Dean	IB	11	0	

IVR	Stop Name	DIR	Boards	Alights	Location Type
2797	Indiana @ Valley Mall (HK Buffett)	IB/OB	11	14	
1916	Market @ Cleveland	EB	11	19	
2132	Maple @ Pacific	OB	11	9	
2588	Medical Lake Center	IB	11	3	Transit Center
2728	6th @ Golden Hills Drive	IB/CW	11	7	Shelter
4072	Monroe @ Francis	IB	11	0	
4113	57th @ Perry	IB	11	0	
3627	3rd @ Arthur	OB	11	50	
3548	Nevada @ Lyons	OB	11	56	
3064	Trent @ Park	WB	11	5	
1909	Myrtle @ Frederick	OB	11	11	
2899	Sprague @ Evergreen	OB	11	25	
4102	Spokane Falls Blvd @ Front	IB	11	13	
4049	Washington @ 2nd	IB	11	20	
2366	29th @ Martin (Applebee's)	IB	11	2	
2127	Freya @ 24th	SB	11	7	
2380	8th @ McClellan	IB	11	12	
2322	Bernard @ 21st	IB	11	0	
2130	Freya @ 29th Avenue	SB	11	10	
2121	18th @ Ray	SB	11	10	
1143	Riverside @ A St	IB	10	6	
3090	Mission @ Dakota	IB	10	2	
3860	Mission @ Calispel	IB	10	22	
2090	Wellesley @ Perry	EB	10	12	
4178	Rowan @ Driscoll	OB	10	27	
2281	Lincoln @ 22nd	IB	10	2	
1208	Boone @ Monroe	OB	10	21	
3119	Lawson @ 12th	IB	10	0	
1251	Wellesley @ G Street	IB	10	3	
2623	Hwy 2 @ Ziegler	IB	10	2	
1777	Illinois @ Hamilton	OB	10	10	
2682	Four Lakes	OB	10	25	
2356	29th @ Ray	NB	10	22	
2014	Hartson @ Ferrall	NB	10	7	
3435	Monroe @ Columbia	IB	10	1	
1719	Magnesium @ Mayfair	IB	10	5	
2609	Lefevre @ Medical Lake High School	IB	10	0	Shelter
2793	Indiana @ 12410 E (Sounds on Wheels)	EB/OB	10	57	
3815	Park @ 8th	IB	10	0	



IVR	Stop Name	DIR	Boards	Alights	Location Type
2756	Presley @ Holladay	IB	10	0	
3839	5th @ Smith	IB	10	2	
2760	1st @ Union	IB/CCW	10	0	
1882	Trent @ Perry (Social Security)	OB	10	87	
2333	Grand @ 13th	OB	10	22	
2736	6th @ Cheney High School	OB/CCW	10	28	
2698	1st @ G Street	OB/CW	10	23	
2766	1st @ Calispel	IB/CCW	10	9	
1163	Courthouse (Broadway @ Madison)	OB	10	45	Shelter
2063	Wellesley @ Milton	WB	10	6	
2045	Wellesley @ Cincinnati	WB	10	5	
2035	N Market @ Rockwell	WB	10	0	
1635	Nevada @ Francis	OB	10	25	
3565	Pines @ Sprague	IB	10	18	
4228	Wellesley @ Sullivan	IB	10	16	
3065	Trent @ Lily	WB	10	5	
3066	Trent @ Bradley	WB	10	0	
3766	Montgomery @ Woodruff	WB	10	1	
3564	Pines @ Valleyway	IB	10	5	
3566	Pines @ 1st	IB	10	3	
2863	Sprague @ Rebecca	OB	10	18	Shelter
4207	Rowan @ Belt	IB	10	0	
1622	Nevada @ Bridgeport	OB	10	30	
1726	Nevada @ Lincoln	IB	10	0	
2119	Ray @ 15th	SB	10	11	
2379	Grand @ 12th	IB	10	7	Shelter
2320	Bernard @ 25th	IB	10	0	
2125	Freya @ Congress	SB	10	1	
2374	Grand @ 22nd	IB	10	1	
1484	Monroe @ Wedgewood	IB	10	0	
4093	Mission @ Barker	IB	9	0	
3882	Appleway @ Greenacres	IB	9	1	
2961	Sprague @ Bowdish	IB	9	9	
1760	Washington @ North River Drive	OB	9	24	
1560	Division @ Hawthorne	OB	9	39	
1146	Riverside @ Elm	IB	9	9	
1650	Nevada @ Princeton	IB	9	0	
1088	Cochran @ Dalton	EB	9	7	
3336	Wall @ Spokane Falls Blvd	OB	9	0	

IVR	Stop Name	DIR	Boards	Alights	Location Type
1541	Division @ Magnesium	OB	9	103	
1220	Maple @ Indiana	OB	9	50	
1226	NW Blvd @ Alberta	OB	9	11	
1236	G Street @ Wellesley	OB	9	7	
3430	32nd @ Clinton	IB	9	3	
1957	Rowan @ Lacey	OB	9	30	
1781	North Center @ Montgomery	OB	9	28	
1869	Indiana @ Division	IB	9	9	
1857	Illinois @ Morton	IB	9	4	
3876	Perry @ 12th	OB	9	28	
1040	5th @ Browne	IB	9	1	
1042	5th @ Bernard	IB	9	2	
1264	Northwest Blvd @ Belt	IB	9	0	
1438	G Street @ Central	IB	9	0	
2001	Freya @ 28th	NB	9	17	
2003	Freya @ 24th	NB	9	6	
2294	Wall @ 4th	OB	9	22	
4170	Mission @ Crestline	OB	9	14	
4119	57th @ Hailee	IB	9	0	
4100	29th Av @ Garfield St (Manito Center)	OB	9	44	
4114	57th @ Pittsburg	IB	9	0	
2648	Med Lake Hwy @ Stanley (Conoco)	IB	9	1	
2066	Hayford @ 9th	OB	9	21	
2133	Pacific @ Oak	OB	9	97	
3830	8th @ Havana	IB	9	2	
4214	Broadway @ Argonne	OB	9	22	
3604	Argonne @ Boone	IB	9	2	
3823	8th @ Fancher	IB	9	1	
1751	Addison @ Walton	IB	9	8	
1729	Standard @ Lincoln	IB	9	1	
3626	3rd @ Sprague Way	OB	9	35	
1618	Hamilton @ Jackson	OB	9	15	
3568	Pines @ 8th	IB	9	2	
1123	Driscoll @ Hoffman	WB	9	16	
1362	Indian Trail @ Ridgecrest	IB	9	0	
1388	Ash @ Everett	IB	9	0	
3332	Francis @ Monroe	OB	9	139	
2375	Grand @ 20th	IB	8	1	
2126	Freya @ 22nd	SB	8	3	

IVR	Stop Name	DIR	Boards	Alights	Location Type
2129	Freya @ 28th	SB	8	5	
2859	Sprague @ Haven	OB	8	31	
1166	Broadway @ Walnut	OB	8	56	
2755	Presley @ Gregory	IB	8	0	
3094	Mission @ Division	IB	8	13	
1804	Wellesley @ Cook	EB	8	22	
2068	Wellesley @ C Street	EB	8	6	
2081	Wellesley @ Whitehouse	EB	8	6	
4025	Maple @ Mallon	OB	8	23	
3369	32nd @ Pines (U HIGH)	OB	8	11	
1216	Maple @ Boone	OB	8	70	
2285	14th @ Lincoln	IB	8	3	Shelter
1792	Crestline @ Courtland	OB	8	17	
4229	Wall @ 2nd	OB	8	12	
2400	Regal @ 37th	IB/OB	8	47	
3741	Trent @ Vista	EB	8	11	
4172	1st @ Vine	CCW	8	1	Shelter
4002	Trent @ Dale	EB	8	24	
3884	Mansfield @ Perrine	EB	8	9	
1887	Napa @ Cataldo	OB	8	27	
2650	Medical Lake Hwy @ Geiger (Mobil)	IB	8	1	
2543	Northern Quest Casino	OB	8	191	Shelter
2220	Madison @ 14th	OB	8	11	
2222	14th @ Lincoln	OB	8	22	
2348	29th @ Perry	OB	8	32	
2747	7th @ I Street	IB/CCW	8	5	Shelter
2816	Appleway @ E 22910	IB/OB	8	2	Shelter
3846	2nd @ Altamont	IB	8	1	
2967	Sprague @ Walnut	IB	8	3	
2834	University @ Broadway	IB	8	0	
3685	Empire @ Addison	IB	8	3	
1728	Lincoln @ Dakota	IB	8	0	
1738	Lidgerwood @ Francis	IB	8	4	
1721	Magnesium @ Standard	IB	8	3	
1658	Hamilton @ North Foothills Drive	IB	8	12	
3549	Nevada @ Cozza	OB	8	19	
4086	4th @ Hemlock	IB	8	0	
3513	Mission @ McDonald	IB	8	4	
3215	Sullivan @ Marietta	IB	8	0	

IVR	Stop Name	DIR	Boards	Alights	Location Type
3515	Mission @ Vercler Val Gen Hosp	IB	8	5	
3567	Pines @ 4th	IB	8	3	
1367	Indian Trail @ Lowell	IB	7	0	
1364	Indian Trail @ Navaho	IB	7	0	
2641	Sunset @ Royal	IB	7	1	
3285	Grand @ 28th	IB	7	1	
2117	Thor @ 8th	SB	7	11	
4041	Alberta @ Dalton	WB	7	9	
1141	Government Way @ G St.	IB	7	7	
1067	Maple @ Main	IB	7	2	
3091	Mission @ Astor	IB	7	6	
1085	Fort George Wright @ Elliot	EB	7	5	
3346	University @ 16th	OB	7	2	
3372	32nd @ Clinton	OB	7	6	
1557	Hawthorne @ Newport Highway 2	OB	7	39	
3310	Boone @ Maple	OB	7	65	
3292	Boone @ Spokane Transit Authority	OB	7	28	
2261	37th @ Pittsburg	IB	7	1	
2273	Bernard @ 33rd	IB	7	0	
3528	Rowan @ Haven	OB	7	31	
1941	Napa @ Springfield	IB	7	3	
1970	Francis @ Lidgerwood	OB	7	13	
1807	Leave Market @ Wellesley	OB	7	9	
2573	Hwy 2 @ West St	IB	7	0	
2622	Hwy 2 @ Craig	IB	7	0	
2880	Appleway @ Vista	OB	7	18	
4099	55th @ Freya	IB/OB	7	23	
3245	Perry @ 17th	IB	7	5	
2131	2nd @ Washington	IB	7	52	
1028	7th @ Browne Heart Institute	IB	7	0	
1044	6th @ Washington	IB	7	0	
3434	Monroe @ Dalke	IB	7	0	
2794	Wall @ 5th	OB	7	52	
4140	Appleway @ Greenacres	OB	7	8	
2890	Sprague @ Bowdish	OB	7	12	
2896	Sprague @ McDonald	OB	7	23	
2943	Sprague @ Conklin	IB	7	0	
4088	Lib Lk Rd @ Country Vista	IB	7	0	
2296	Wall @ 2nd	IB	7	36	

IVR	Stop Name	DIR	Boards	Alights	Location Type
1072	Sprague @ Adams	OB	7	18	
2763	1st @ D Street CH. LIBRARY	IB/CCW	7	3	
2765	1st @ A Street	IB/CCW	7	2	
4007	Indiana @ 13518 E (ITT)	IB/OB	7	0	
3991	Lakeland Village	IB/OB	7	13	
1648	Nevada @ Olympic	IB	7	0	
1643	Nevada @ Dalke	IB	7	2	
2293	5th @ Monroe	IB	7	0	
1699	Wiscomb @ Wedgewood (Lilac Plaza)	OB	7	35	
2215	Adams @ 6th	OB	7	54	
2154	Sunset @ Lindeke	OB	7	42	
4224	Northwest Blvd @ Oak	IB	7	10	
1265	Northwest Blvd @ York	IB	7	0	
3212	Pines @ Broadway	OB	7	16	
3485	Pines @ 10th	OB	7	15	
3488	Pines @ 4th	OB	7	5	
4089	Progress @ Trent	OB	7	19	
3819	8th @ Thierman	IB	7	0	
3851	2nd @ Perry	IB	7	1	
3836	5th @ Greene	IB	7	4	
3052	Liberty @ Marguerite	OB	7	22	
3814	Park @ 5th	IB	7	2	
3826	8th @ Carnahan	IB	7	1	
1187	Mission @ Cochran	IB	7	0	
1186	Mission @ Nettleton	IB	7	0	
4186	Indiana @ Evergreen	OB	6	27	
1631	Nevada @ Rowan	OB	6	25	
1051	Lincoln @ Sprague	IB	6	148	
3028	Airport @ Spotted	IB	6	0	
3341	Monroe @ Columbia	OB	6	21	
1413	Monroe @ Kiernan	OB	6	69	
3073	Trent @ Byrd	WB	6	1	
3772	Trent @ Vista	WB	6	4	
2789	Sullivan @ Euclid Avenue	IB	6	0	
3563	Pines @ Alki	IB	6	0	
3018	Mission @ Magnolia	OB	6	33	
3335	University @ 6th	OB	6	0	
4166	Rowan @ Ash	IB	6	0	
1375	Indian Trails @ N 3233 (Yokes)	IB	6	5	

IVR	Stop Name	DIR	Boards	Alights	Location Type
1365	Indian Trail @ Shawnee	IB	6	0	
1396	Ash @ Glass	IB	6	0	
1374	Indian Trail @ Woodside	IB	6	0	
1370	Indian Trail @ Kathleen	IB	6	0	
2972	Sprague @ 8722 E	IB	6	1	
2835	University @ Boone	IB	6	0	
1706	Nevada @ St. Thomas Moore Way	OB	6	26	
1620	Hamilton @ North Foothills	OB	6	22	
3463	University @ 13th	IB	6	4	
2318	29th Avenue @ Bernard	IB	6	1	
2325	Bernard @ 16th	IB	6	1	
2330	Washington @ 4th	IB	6	34	
4080	Sunset @ Windsor	IB	6	1	Shelter
2642	Sunset @ Assembly	IB	6	1	
1621	Nevada @ Euclid (Gonzaga Prep)	OB	6	11	
3755	Indiana @ Mirabeau Parkway	IB	6	7	
3961	Appleway @ Signal	IB/OB	6	0	
2820	Appleway @ Meadowood Ln	IB	6	0	Shelter
4182	Hamilton @ Cataldo	OB	6	30	
1062	Clarke @ Spruce	IB	6	6	
1538	Division @ Cozza	OB	6	35	
2277	29th @ Post	IB	6	2	
3525	Cook @ Rich	OB	6	37	
3173	6th @ Solar	IB	6	0	
1790	Crestline @ Euclid	OB	6	50	
1988	Francis @ Wall	IB	6	2	
4101	Spokane Falls Blvd @ Riverpoint	OB	6	14	
3020	Mission @ Stone	OB	6	18	
1986	Francis @ Jefferson	IB	6	0	
1951	Browne @ Main	IB	6	24	
2056	Wellesley @ Cedar	WB	6	10	
2004	Freya @ 22nd	NB	6	5	
2065	Wellesley @ Driscoll	WB	6	26	
2048	Wellesley @ Lidgerwood	WB	6	10	
2030	Market @ Cleveland	WB	6	10	
2871	Sprague @ Howe	OB	6	31	
2860	Sprague @ Greene	OB	6	25	
2872	Sprague @ Fancher	OB	6	8	
2858	Sprague @ Lacey	OB	6	12	

IVR	Stop Name	DIR	Boards	Alights	Location Type
3962	Mission @ E 23102	IB/OB	6	19	
4154	Maple @ 9th	OB	6	52	
1697	Addison @ Lyons	OB	6	11	
1696	Addison @ Francis	OB	6	41	
1153	2nd @ Jefferson	OB	6	25	
2591	Prentis @ Campbell	IB/OB	6	5	
1888	Napa @ Boone	OB	6	13	
2216	Adams @ 8th	OB	6	32	
2606	Maple @ Alder (Eastern State Hospital)	IB	6	0	
2219	Madison @ 12th	OB	6	5	
2694	1st @ Calispel	OB/CW	6	4	
1693	Lidgerwood @ Dalke	OB	6	23	
3870	Indiana @ Mirabeau Parkway	IB/OB	6	10	
4008	Indiana @ E. 12718 Olympic Boat	IB/WB	6	1	
2748	7th @ Washington	IB/CCW	6	6	Shelter
4147	Mission @ Grady	IB	6	1	
2901	Sprague @ Best (Group Health)	OB	6	6	
2937	Appleway @ Long	IB	6	1	
2734	6th @ McKeehan Way	OB	6	1	
3636	5th @ Haven	OB	6	24	
3844	3rd @ Crestline	IB	6	1	
3899	Havana @ Hartson	OB	6	9	
3908	8th @ Eastern	OB	6	11	
3228	Mullan @ Mission	OB	6	18	
4136	Broadway @ Vista	IB	6	0	
3196	Magnolia @ 3rd	IB	6	1	
2331	2nd @ Washington	IB	6	24	
2818	Regal @ 5001 S	IB	5	0	
4052	18th @ Hogan	IB	5	4	
3478	University @ 13th	OB	5	12	
3761	Montgomery @ Carlisle	WB	5	2	
3768	Montgomery @ Locust	WB	5	2	
3762	Montgomery @ Jackson	WB	5	1	
3561	Pines @ Boone	IB	5	2	
4012	Trent @ Fancher	WB	5	2	
3071	Trent @ Airport	WB	5	0	
3859	Mission @ Upriver Dr	OB	5	20	
1907	Myrtle @ Cleveland	OB	5	3	
2730	6th @ Betz	IB	5	7	

IVR	Stop Name	DIR	Boards	Alights	Location Type
1363	Indian Trail @ Comanche	IB	5	1	
1361	Indian Trail @ Bedford	IB	5	0	
1623	Nevada @ Gordon	OB	5	17	
3625	3rd @ Sherman	OB	5	30	
2369	29th @ Ivory	IB	5	3	
2123	18th Avenue @ Freya	SB	5	4	
2383	Washington @ 6th	IB	5	1	
2358	29th @ Thor	SB	5	4	
3157	Washington @ Spokane Falls Blvd	OB	5	2	
3093	Mission @ Ruby	IB	5	31	
2096	Haven @ Heroy	EB	5	16	
3382	Evergreen @ 20th	OB	5	1	
3357	Bowdish @ 32nd	OB	5	2	
3374	32nd @ Mamer	OB	5	8	
1277	Maple @ Grace	OB	5	11	
1274	Maple @ Northwest Blvd	OB	5	26	
1275	Maple @ Jackson	OB	5	17	
1381	Francis @ Alberta	OB	5	3	
1435	G St @ Francis	OB	5	11	
1954	Sprague @ Stevens	IB	5	289	
3432	32nd @ Collins	IB	5	5	
3408	Sullivan @ 8th	IB	5	5	
3452	32nd @ Pierce	IB	5	5	
1943	Trent @ Helena	IB	5	3	
2549	Airway Heights Correctional Center	IB	5	0	
1769	Indiana @ Lidgerwood	OB	5	26	
1959	Rowan @ Stone	OB	5	13	
2638	Hwy 2 @ Windsor	IB	5	1	
1961	Crestline @ Joseph	OB	5	8	
3857	2nd @ McClellan	IB	5	5	
3968	University @ Springfield	IB	5	0	
3784	Freya @ 3rd Avenue	NB	5	3	
2026	Havana @ Alki (Fairgrounds)	NB	5	0	Shelter
2013	Thor @ 8th	NB	5	13	
1010	Wall @ Main	IB	5	80	
3519	Magnesium @ Nevada	IB	5	3	
1749	Addison @ Longfellow	IB	5	1	
1380	Francis @ A Street	IB/OB	5	2	
3125	Spruce @ 2nd	OB	5	81	



IVR	Stop Name	DIR	Boards	Alights	Location Type
2753	Salnave @ Hattie	IB	5	0	
4169	Empire @ Nevada	OB	5	20	
2768	1st @ Vine	IB	5	0	
4018	Empire @ Addison	OB	5	5	
1695	Addison @ Francis	OB	5	36	
2346	29th @ Arthur	OB	5	8	
2334	Grand @ 14th	OB	5	15	
1889	Napa @ Sinto	OB	5	16	
2340	Grand @ 25th	OB	5	16	
2307	Bernard @ 25th	OB	5	18	
2531	Sunset @ Rustle	OB	5	47	
1682	Addison @ Longfellow	OB	5	12	
2692	1st @ Vine	OB/CW	5	7	
2714	7th @ I Street	OB/CW	5	9	
2033	Market @ Glass	WB	5	2	
2053	Wellesley @ Wall	WB	5	16	
1129	Driscoll @ Kiernan	WB	5	2	
2876	Appleway @ Coleman	OB	5	25	
4153	Mission @ Bitterroot	IB	5	0	
2895	Sprague @ 12816 E (DMV)	OB	5	20	
2953	Sprague @ Mayhew	IB	5	1	
4148	Mission @ Harmony	IB	5	1	
2948	Sprague @ Progress	IB	5	0	
1651	Nevada @ Rich	IB	5	5	
1652	Nevada @ Lacrosse	IB	5	0	
1249	Wellesley @ K Street	IB	5	0	
3486	Pines @ 8th	OB	5	6	
4156	Progress @ Wellesley	OB	5	11	
3227	University @ 8th	OB	4	10	
3817	8th @ Coleman	IB	4	0	
1189	Summit @ A Street	IB	4	0	
1188	Summit @ Lindeke	IB	4	0	
2733	6th @ Betz	OB	4	13	
3279	Nevada and Magnesium	OB	4	17	
1624	Nevada @ Empire	OB	4	22	
1419	Monroe @ Queen	OB	4	43	
3068	6300 E Trent	WB	4	1	
3764	Montgomery @ Oberlin	WB	4	0	
3013	Mission @ Astor	OB	4	12	

IVR	Stop Name	DIR	Boards	Alights	Location Type
3973	16th @ Pines	IB	4	5	
1911	Frederick @ Sycamore	OB	4	11	
1393	Ash @ Lacrosse	IB	4	0	
4006	Indiana @ 13518 E (ITT/Great Floors)	IB/OB	4	3	
1090	Driscoll @ Kiernan	EB	4	7	
2099	Market @ Glass	EB	4	5	
3276	Broadway @ Monroe	OB	4	11	
3390	Sullivan @ 16th	OB	4	1	
3596	Hawthorne @ Mayberry	OB	4	50	
4014	Sullivan @ 8th	OB	4	4	
1556	Newport Highway @ Graves	OB	4	68	
2283	Lincoln @ Shoshone	IB	4	0	
2279	Lincoln @ 26th	IB	4	0	
2284	Lincoln @ 17th	IB	4	0	
1225	Northwest Blvd @ Nettleton	OB	4	6	
2275	29th @ Bernard	IB	4	1	
4189	Dakota @ Illinois	OB	4	8	
2913	Sullivan @ Valleyway	IB	4	11	
4225	Market @ Diamond	OB	4	25	
3757	Indiana @ Evergreen (Boston Pizza	IB	4	10	
1973	Francis @ Whitehouse	OB	4	2	
1946	Trent @ Hamilton	IB	4	5	
1779	Illinois @ Morton	OB	4	11	
1783	Perry @ Marietta	OB	4	4	
1995	Francis @ Standard	IB	4	3	
1990	Francis @ Whitehouse	IB	4	0	
2821	Mission @ Mullan	OB	4	32	
3878	Perry @ 15th	OB	4	13	
2403	Regal @ Palouse Hwy	OB	4	61	
1036	5th @ Chandler (Rockwood Clinic)	IB	4	0	
2174	8th & McClellan	OB	4	55	
1053	Main @ Cedar	OB	4	0	
1073	Riverside @ Maple	OB	4	13	
1059	Clarke @ Spruce	OB	4	6	
4185	Alki Way @ Alki Av	NB	4	0	
2005	Freya @ Congress	NB	4	5	
2800	Indiana @ Valley Mall (Best Buy)	IB/OB	4	9	
2795	Indiana @ Valley Mall (IHOP)	IB/OB	4	6	
3737	Trent @ Lily	EB	4	12	

IVR	Stop Name	DIR	Boards	Alights	Location Type
4098	Cedar @ 11th	OB	4	20	
3749	Montgomery @ Oberlin	EB	4	7	
3198	Sunset @ Government Way	OB	4	20	
2613	Lidgerwood @ Everett	OB	4	7	
1885	Napa @ Springfield	OB	4	3	
2578	West Lake Hospital	IB/OB	4	3	
2192	2nd @ Cedar	OB	4	18	
2137	Pacific @ Hemlock (MAC Museum)	OB	4	34	
2338	Grand @ 22nd	OB	4	8	
2300	Grove @ 14th	OB	4	13	
2973	Sprague @ Bessie	IB	4	3	
2839	Mission @ Locust	IB	4	3	
2833	University @ Valleyway	IB	4	0	
3686	Empire @ Standard	IB	4	3	
2616	Lidgerwood @ Everett	IB	4	4	
1727	Lincoln @ Wilding	IB	4	0	
2711	7th @ Washington	OB	4	0	
2059	Wellesley @ Cannon	WB	4	21	
1125	Driscoll @ Rockwell	WB	4	5	
4115	57th @ Crestline	IB	4	0	
4198	Sprague @ Perrine	OB	4	26	
2945	Sprague @ 15800 E (Fred Meyer)	IB	4	13	
4143	Mission @ Harmony	OB	4	1	
2960	Sprague @ Fox	IB	4	4	Shelter
2898	Sprague @ Mayhew	OB	4	4	
2941	Sprague @ 16713 E (Eagles)	IB	4	0	
4223	Northwest Blvd @ Euclid	IB	3	0	
1436	G Street @ Decatur	IB	3	3	
1258	Northwest Blvd @ D Street	IB	3	0	
1261	Northwest Blvd @ Alberta	IB	3	9	
3492	Pines @ Valleyway	OB	3	5	
3489	Pines @ 1st	OB	3	7	
2796	Indiana @ Valley Mall	OB	3	8	Shelter
3493	Pines @ Alki	OB	3	10	
3482	16th @ Pines	OB	3	5	
3848	2nd @ Napa	IB	3	3	
3639	5th @ Freya	OB	3	12	
3191	Park @ Broadway	OB	3	16	
4066	1st @ Washington	IB	3	0	Shelter

IVR	Stop Name	DIR	Boards	Alights	Location Type
3190	8th @ Park	OB	3	10	
3630	Magnolia @ 5th	OB	3	21	
1168	Broadway @ Oak	OB	3	44	
1169	Broadway @ Cannon	OB	3	35	
3213	Pines @ Main	IB	3	11	
3067	Trent @ Dollar	WB	3	4	
3570	Pines @ 12th	IB	3	0	
4179	Sullivan @ Trent	IB	3	0	
1904	Marietta @ Rebecca	OB	3	1	
4165	Rowan @ Cannon	IB	3	0	
3666	Alberta @ Columbia	IB	3	0	
3098	Leave Indian Trail End of the Line	IB	3	1	
3462	University @ 16th	IB	3	9	
2315	29th @ Manito Blvd	IB	3	0	
2326	Bernard @ 15th	IB	3	5	
2372	Grand @ 25th	IB	3	4	
2110	Havana @ 2nd	SB	3	2	
3474	Spokane Falls Blvd @ Wall	IB	3	100	
1140	Government Way @ N 211	IB	3	0	
1138	Government Way @ N 1202	IB	3	6	
3308	Riverside @ Monroe	IB	3	182	
3380	Evergreen @ 24th	OB	3	2	
3384	16th @ 14210 E	OB	3	1	
2906	Sullivan @ Valleyway	OB	3	5	
3355	32nd @ Pierce	OB	3	3	
3370	32nd @ Collins	OB	3	7	
1281	Maple @ Garland	OB	3	36	
1221	Maple @ Knox	OB	3	19	
3802	37th @ Cook	IB	3	0	
3801	37th @ Mt Vernon	IB	3	7	
2271	37th @ Bernard	IB	3	1	
1222	Northwest Blvd @ Oak	OB	3	8	
2262	37th @ Helena	IB	3	1	
3455	University @ 30th	IB	3	0	
3429	32nd @ SR 27	IB	3	1	
4151	32nd @ Bowdish	IB	3	6	
3522	Perry @ North Foothills	OB	3	5	
3423	Evergreen @ 24th	IB	3	2	
3410	Sullivan @ 12th	IB	3	4	

IVR	Stop Name	DIR	Boards	Alights	Location Type
4107	Indiana @ Standard	OB	3	9	
3527	Cook @ Wellesley	OB	3	27	
3458	University @ 24th	IB	3	0	
3414	16th @ Progress	IB	3	2	
3416	16th @ Adams	IB	3	3	
1758	Francis @ Standard	OB	3	7	
1808	Market @ Wabash	OB	3	4	
1768	Indiana @ Ruby	OB	3	8	
3540	Empire @ Stone	IB	3	3	
1997	Francis @ Perry	IB	3	3	
3872	Arthur @ 5th	OB	3	21	
2396	Southeast Blvd @ 29th	OB	3	33	
1037	Cowley @ 4th	IB	3	0	
2478	Rockwood Blvd. @ 9th Ave	IB	3	0	
1018	6th @ Stevens	OB	3	38	
2398	Southeast Blvd @ Regal	OB	3	11	
2009	Ray @ 18th Avenue	NB	3	13	
2242	37th @ Arthur	OB	3	14	
2772	1st @ Railroad Tracks	IB/CCW	3	5	
1340	Francis @ Alberta	IB/OB	3	13	
3988	Medical Lake Center	IB/OB	3	9	
3738	Trent @ Park	EB	3	7	
2749	Washington @ 7th	IB/CCW	3	1	Shelter
3034	Trent @ Koren	EB	3	3	
3746	Montgomery @ Woodruff	EB	3	8	
2713	7th @ Washington	CW	3	11	
3999	Elm @ Erie	OB/CW/CCW	3	295	
1876	Riverpoint @ Spokane Falls Blvd	OB	3	19	
2589	Lake @ Walker	IB/OB	3	3	
2135	Pacific @ Cannon	OB	3	35	
2688	1st @ Betz (RR tracks)	OB/CW	3	17	
2696	1st @ C Street CH. LIBRARY	OB/CW	3	12	
2242	37th @ Hatch	OB	3	11	
2311	29th @ Division	OB	3	4	
2544	Hwy 2 @ Flint (Triumph)	OB	3	20	
2225	Lincoln @ 19th	OB	3	6	
1883	Trent @ Helena	OB	3	6	
2717	F Street @ 6th	OB/CW	3	2	
2822	Mission @ Locust	OB	3	1	

IVR	Stop Name	DIR	Boards	Alights	Location Type
3965	Mission @ Oberlin	OB	3	4	
2827	University @ Broadway	OB	3	10	
1722	Magnesium @ Dakota	IB	3	1	
1731	Standard @ Cozza	IB	3	0	
1730	Standard @ Lidgerwood	IB	3	0	
1134	TJ Meenach @ Elliot	WB	2	4	
4141	Barker @ Alki	OB	2	4	
4146	Mission @ Holl	IB	2	2	
4145	Mission @ Holl	OB	2	4	
2950	Sprague @ Best	IB	2	0	
2902	Sprague @ Adams	OB	2	18	
2888	Sprague @ Gillis	OB	2	2	
2944	Sprague @ 15915 E	IB	2	1	
3575	Hawthorne @ Division	IB	2	0	
3598	Nevada @ N 9727	IB	2	0	
1645	Nevada @ Joseph	IB	2	0	
1642	Nevada @ Decatur	IB	2	0	
1339	Francis @ Belt	IB	2	0	
3494	Pines @ Desmet	OB	2	10	
4217	Pines @ Main	OB	2	3	
3496	Mission @ Pines	OB	2	27	
3497	Mission @ Houk	OB	2	5	
3484	Pines @ 12th	OB	2	8	
3498	Mission @ Vercler Val Gen Hosp	OB	2	5	
3504	Mission @ Evergreen	OB	2	3	
4757	Indiana @ Evergreen (Boston Pizza	OB	2	3	
4216	Sullivan @ Tirerama	OB	2	16	
3495	Pines @ Sinto	OB	2	15	
4135	Broadway @ Sargent	IB	2	0	
3910	8th @ Thierman	OB	2	6	
3634	5th @ Smith	OB	2	11	
4129	Broadway @ Ella	OB	2	14	
3912	8th @ Coleman	OB	2	3	
4130	Broadway @ Vista	OB	2	6	
3642	5th @ Florida	OB	2	9	
1185	Nora @ Pettet	IB	2	0	
3555	Hawthorne @ Newport Hwy (nearside	OB	2	5	
3556	Hawthorne @ Whitworth Drive	OB	2	14	
1625	Nevada @ Lacrosse	OB	2	10	

IVR	Stop Name	DIR	Boards	Alights	Location Type
1633	Nevada @ Central	OB	2	9	
1630	Nevada @ Everett	OB	2	11	
1634	Nevada @ Dalke	OB	2	2	
3277	Monroe @ Rowan	OB	2	37	
1416	Monroe @ Longfellow	OB	2	41	
3759	Indiana @ Evergreen	IB	2	0	
3014	Mission @ Dakota	OB	2	13	
3062	Trent @ Ella	WB	2	0	
3574	16th @ Pierce	IB	2	0	
3763	Montgomery @ Van Marter	WB	2	0	
3019	Mission @ Napa	OB	2	20	
3511	Mission @ Blake	IB	2	0	
1165	Broadway @ Cedar	OB	2	36	
1372	Indian Trail @ Fleming	IB	2	0	
1373	Indian Trail @ Weile	IB	2	0	
1376	Indian Trail @ Francis	IB	2	1	
2323	Bernard @ 20th	IB	2	2	
1920	Freya @ Trent	SB	2	4	
2104	Havana @ Broadway	SB	2	2	
2105	Havana @ Alki (Fairgrounds)	SB	2	3	
2116	Thor @ Hartson	SB	2	4	
1139	Government Way @ N 508	IB	2	0	
1849	Riverside @ Maple	IB	2	9	
3088	Mission @ Superior	IB	2	7	
2076	Wellesley @ Cedar	EB	2	11	
1094	Driscoll @ Rockwell	EB	2	7	
3338	Post @ Mallon	OB	2	3	
3393	Sullivan @ 11th	OB	2	0	
4160	Rowan @ Ash	OB	2	17	
1344	Indian Trail @ Holyoke	OB	2	6	
1279	Maple @ Glass	OB	2	12	
1282	Maple @ Lacrosse	OB	2	6	
3646	Assembly @ Sanson	OB	2	20	
4046	37th @ Crestline	IB	2	1	
2263	37th @ Perry	IB	2	0	
1231	Northwest Blvd @ F Street	OB	2	5	
4103	Pine @ Spokane Falls Blvd	IB	2	7	
4031	North Foothills @ Magnolia	OB	2	13	
3431	32nd @ Woodlawn	IB	2	1	

IVR	Stop Name	DIR	Boards	Alights	Location Type
1963	Crestline @ Dalke	OB	2	18	
1795	Empire @ Stone	OB	2	7	
1942	Trent @ E 1800	IB	2	1	
1948	Riverpoint @ N 639	IB	2	0	
4197	57th E @ Regal	OB	2	53	
4050	18th @ Hogan	OB	2	3	
4116	57th @ Hailee	OB	2	9	
3879	Perry @ 17th	OB	2	9	
2394	Southeast Blvd @ Rockwood Blvd	OB	2	17	
1043	Bernard @ 6th	IB	2	1	
1023	5th @ Browne	OB	2	8	
1078	Government Way @ G Street	OB	2	5	
1081	Government Way @ N1202	OB	2	5	
1060	Riverside @ Clarke	OB	2	7	
4037	Havana @ 3rd	NB	2	3	
1926	Freya Way @ Trent	NB/WB	2	6	
3752	11016 E Montgomery	EB	2	12	
3033	Trent @ Airport	EB	2	3	
3708	Empire @ Standard	OB	2	8	
2751	Washington @ 3rd	IB/CCW	2	20	
3037	Trent @ Dollar	EB	2	8	
2699	1st @ Union	OB/CW	2	10	
3750	Montgomery @ Carlisle	EB	2	2	
3751	Montgomery @ Van Marter	EB	2	1	
3745	Montgomery @ Locust	EB	2	0	
1712	Magnesium @ Division	OB	2	6	
1680	Addison @ Walton	OB	2	5	
2645	Medical Lake Hy @ Geiger Bl (Mobil)	OB	2	10	
2536	Sunset @ Windsor	OB	2	8	
1708	Magnesium @ Nevada	OB	2	10	
2349	29th @ Pittsburg	OB	2	11	
2217	Adams @ 10th	OB	2	30	
2250	37th @ Mt Vernon	OB	2	7	
1048	5th @ Deaconess Hospital	OB	2	5	
2605	Pine @ Maple	IB	2	2	Shelter
1879	Riverpoint @ Spokane Falls Blvd	OB	2	7	
2336	Grand @ 18th	OB	2	14	
2214	5th @ Jefferson	OB	2	16	
2719	C Street @ 6th	OB/CW	2	15	



IVR	Stop Name	DIR	Boards	Alights	Location Type
2811	Molter @ Mission	IB/OB	2	2	
4118	57th @ Ferrall	IB	2	0	
4168	55th @ Palouse Hwy	IB	2	0	
2729	6th @ Simpson Parkway Drive	IB	2	5	
2752	Salnave @ Lincoln	IB	2	0	
2806	Appleway @ Meadowood Ln	OB	2	55	
2810	Mission @ E 23400	IB	2	6	
2809	Mission @ Homestead Dr	IB	2	6	
2824	Mission @ Felts	OB	1	1	
3967	University @ Springfield	OB	1	7	
3963	Mission @ Farr	OB	1	0	
2829	University @ Main	OB	1	8	
2837	Mission @ Felts	IB	1	1	
3972	Mission @ Farr	IB	1	0	
3970	Mission @ Raymond	IB	1	0	
4040	Alberta @ Courtland	WB	1	2	
2036	Market @ Heroy	WB	1	4	
2064	Wellesley @ C Street	WB	1	6	
2881	Appleway @ Sargent	OB	1	8	
2882	Appleway @ Dishman	OB	1	8	
4092	Barker @ Mission	OB	1	21	
4144	Mission @ Grady	OB	1	4	
2805	Liberty Lake Rd @ Appleway	OB	1	9	
2920	Sprague @ 16720 E	OB	1	2	
2963	Sprague @ Moffitt	IB	1	4	
2891	Sprague @ Fox	OB	1	4	Shelter
2932	Barker @ Alki	IB	1	1	
4142	Barker @ Boone	OB	1	18	
2903	Sprague @ Progress	OB	1	1	
4199	Sprague @ Flora	OB	1	19	
3324	Monroe @ Wedgewood	OB	1	12	
4071	Monroe @ Francis	OB	1	8	
3656	Rowan @ Moore	IB	1	1	
1439	G Street @ Rowan	IB	1	0	
1257	Northwest Blvd @ F Street	IB	1	0	
1253	G Street @ Longfellow	IB	1	1	
1262	Northwest Blvd @ Nettleton	IB	1	0	
1255	G Street @ Garland	IB	1	0	
1341	Francis @ A Street	IB/OB	1	6	

IVR	Stop Name	DIR	Boards	Alights	Location Type
1248	Wellesley @ Rustle	IB	1	2	
1337	Francis @ Oak	IB	1	0	
3211	Sullivan @ Kiernan	OB	1	7	
3501	Mission @ 13320 E	OB	1	9	
3499	Mission @ Woodlawn	OB	1	3	
3480	16th @ Bowdish	OB	1	5	
3502	Mission @ Blake	OB	1	5	
3479	16th @ Pierce	OB	1	3	
3481	16th @ Union	OB	1	3	
3640	5th @ Rebecca	OB	1	11	
3850	2nd @ Madelia	IB	1	1	
3629	3rd @ Madelia	OB	1	0	
3194	5th @ Havana	IB	1	0	
4133	Argonne @ Grace	OB	1	4	
3904	8th @ McKinnion	OB	1	0	
3591	Mullan @ Boone	OB	1	10	
3824	8th @ Woodlawn	IB	1	0	
3828	8th @ Custer	IB	1	0	
3914	Park @ 5th	OB	1	6	
3825	8th @ McKinnon	IB	1	0	
1179	Summit @ Lindeke	OB	1	17	
1170	Broadway @ Nettleton	OB	1	70	
3550	Nevada @ Sharpsburg	OB	1	23	
3553	9832 N Nevada	OB	1	8	
4033	Nevada @ Lincoln	OB	1	12	
1629	Nevada @ Olympic	OB	1	12	
1626	Nevada @ Rich	OB	1	6	
1627	Nevada @ Princeton	OB	1	5	
3765	10311 E Montgomery	WB	1	0	
4180	Evergreen @ Indiana	IB	1	3	
3074	Trent @ Waterworks	WB	1	1	
3070	Trent @ Koren	WB	1	0	
3510	Mission @ Mamer	IB	1	1	
1902	Jackson @ Freya	OB	1	3	
4162	Belt @ Central	IB	1	0	
1371	Indian Trail @ Excell	IB	1	0	
1368	Indian Trail @ Pacific Park	IB	1	0	
1389	Ash @ Queen	IB	1	0	
2328	Grove @ Sumner	IB	1	2	

IVR	Stop Name	DIR	Boards	Alights	Location Type
1068	Main @ Cedar	IB	1	1	
1918	Marshall @ Fiske	EB	1	13	
4026	Maple @ Queen	OB	1	5	
3726	Rowan @ Alberta	OB	1	11	
3352	University @ 28th	OB	1	0	
3469	32nd @ University	OB	1	9	
4149	32nd @ Fox	OB	1	0	
3386	16th @ Adams	OB	1	2	
3350	University @ 24th	OB	1	2	
3388	16th @ Progress	OB	1	0	
3375	Evergreen @ 32nd	OB	1	1	
1276	Maple @ Chelan	OB	1	3	
1357	Indian Trail @ Comanche	OB	1	4	
1283	Maple @ Longfellow	OB	1	19	
1232	G Street @ Garland	OB	1	3	
2270	37th @ Manito Blvd	IB	1	0	
1224	Northwest Blvd @ Hemlock	OB	1	13	
1228	Northwest Blvd @ Milton	OB	1	10	
1433	G St @ Central	OB	1	8	
2399	Regal @ 35th	IB/OB	1	17	
3427	Evergreen @ 32nd	IB	1	0	
3183	Russell @ Tower	IB	1	0	
3428	32nd @ Mamer	IB	1	6	
4150	32nd @ Fox	IB	1	1	
3240	Evergreen @ 16th	IB	1	2	
3465	University @ 9th	IB	1	6	
3456	Universtiy @ 28th	IB	1	0	
1977	Francis @ Jefferson	OB	1	11	
1794	Crestline @ Empire	OB	1	13	
1793	Crestline @ Gordon	OB	1	6	
2802	Regal @ 5000 S	OB	1	16	
2253	Regal @ Thurston	OB	1	4	
4174	Hartson @ Sherman	OB	1	59	
1019	6th @ Washington	OB	1	8	
1850	Division @ 6th Ave	OB	1	14	
1058	Clarke @ W 2010	OB	1	0	
1079	Government Way @ N 211	OB	1	9	
1054	Main @ Maple	OB	1	2	
2027	Broadway @ Havana	NB	1	1	

IVR	Stop Name	DIR	Boards	Alights	Location Type
2357	29th @ Thor	NB	1	6	
2025	Havana @ Ferry	NB	1	1	
2019	3rd @ Myrtle	NB	1	3	
2738	6th @ Elm	OB/CCW	1	37	
2243	37th @ Perry	OB	1	6	
3036	6300 E Trent	EB	1	2	
3114	Lawson @ 8th	OB	1	13	
3736	Trent @ Dora	EB	1	7	
3023	Mission @ Regal	OB	1	54	
2715	7th @ G Street	CW	1	7	
4111	37th @ Manito Blvd	OB	1	8	
3021	Mission @ Cook	OB	1	28	
3029	4500 E Trent	EB	1	1	
4227	Medical Lake @ Lefevre	IB	1	1	
3517	Magnesium @ E 636 (Graymare Apts)	OB	1	5	
4732	Trent @ Julia	EB	1	2	
3022	Mission @ Lacey	OB	1	16	
4213	Fairchild @ Spaatz	OB	1	2	
4120	Betz @ 6th	OB/CCW	1	2	
2735	6th @ Golden Hills Drive	OB/CCW	1	12	
3730	Trent @ Freya	EB	1	1	
2744	F Street @ 6th	IB/CCW	1	11	Shelter
3031	Trent @ Byrd	EB	1	1	
2712	Washington @ 6th	OB/CW	1	0	
4048	29th @ Southeast Blvd.	OB	1	43	
3113	6th @ Lawson	OB	1	12	
2746	G Street @ 7th	IB/CCW	1	3	
4237	McKeehan Way @ Washington	IB/CW	1	17	
2718	5th @ College	OB/CW	1	0	
2842	1st @ Lincoln	IB	1	10	
4764	Trent @ Florida	EB	1	1	
3927	Hayford @ 12th	OB	1	9	
4058	Medical Lake Hwy @ Graham	OB	1	2	
3735	Trent @ Fancher	EB	1	9	
2743	5th @ College	IB/CCE	1	4	
2614	Lidgerwood @ Rowan	OB	1	11	
2245	37th @ Pittsburg	OB	1	3	
1880	Trent @ Hamilton	OB	1	6	
2693	1st @ Pine	OB/CW	1	14	

IVR	Stop Name	DIR	Boards	Alights	Location Type
2305	Bernard @ 21st	OB	1	12	
2554	Hwy 2 @ Lundstrom	OB	1	9	
2239	37th @ Skyview	OB	1	6	
2309	29th Street @ Bernard	OB	1	2	
1049	5th @ Lincoln	OB	1	6	
2312	29th @ Manito Blvd	OB	1	2	
2249	37th @ Cook	OB	1	4	
2313	29th @ Latawah	OB	1	13	
1877	Riverpoint @ N 501	OB	1	3	
2575	4th @ Eastlake State Hospital	OB	1	7	
2236	37th @ Bernard	OB	1	6	
1884	Trent @ E 1800	OB	1	1	
2240	37th @ Latawah	OB	1	23	
2223	Lincoln @ 17th	OB	1	5	
1691	Lidgerwood @ Joseph (Holy Family)	OB	1	12	
2597	Campbell @ Brower	IB	1	3	
2647	Med Lake Hwy @ Stanley (Conoco)	OB	1	5	
2604	Pine @ Poplar (Pine Lodge)	IB	1	0	
2247	37th @ Crestline	OB	1	3	
2227	Lincoln @ 22nd	OB	1	3	
2303	Bernard @ 19th	OB	1	13	
2607	4th @ Minnie	IB	1	0	
2231	29th @ Post	OB	1	5	
1692	Lidgerwood @ Central (Holy Family)	OB	1	13	
2819	Mission @ Signal	IB	0	0	
4303	Indiana @ 12718 E (Olympic Boat)	EB	0	1	
3187	3rd @ Magnolia	OB	0	0	
2701	1st @ Washington	OB	0	2	
4078	Nevada @ Jay (Winco)	OB	0	27	
4221	Northwest Blvd @ Cannon	OB	0	13	
4079	Sunset @ Grove	OB	0	1	
3740	Trent @ Ella	EB	0	2	
3645	Assembly @ Crown	OB	0	6	
2826	University @ Boone	OB	0	1	
3321	Wall @ Country Homes Blvd	OB	0	13	
3748	10310 E Montgomery	EB	0	1	
3473	Spokane Falls Blvd @ Washington	IB	0	25	
4234	Vista @ Fairview	OB	0	12	
3651	Rowan @ Crown	OB	0	2	

IVR	Stop Name	DIR	Boards	Alights	Location Type
2745	6th @ G Street	IB	0	0	
3652	Rowan @ G	OB	0	2	
4171	Airport Dr @ Flint	OB	0	7	
3503	Mission @ Mamer	OB	0	1	
2702	1st @ Buena Vista	OB	0	2	
2838	Mission @ Woodruff	IB	0	0	
4193	14th @ Adams	OB	0	10	
3593	Argonne @ Knox	OB	0	29	
3421	Evergreen @ 20th	IB	0	1	
3662	Assembly @ Crown	IB	0	0	
3628	3rd @ Liberty Park Pl.	OB	0	3	
3099	Plaza Zone 10	IB	0	1221	
2886	Appleway @ University	OB	0	160	
2754	Salnave @ Bonnie	IB	0	0	
4238	McKeehan Way @ Sports Complex	OB/CCW	0	0	
3342	Monroe @ Dalke	OB	0	34	
3426	Evergreen @ 30th	IB	0	1	
3109	Med Lake Hwy @ Lefevre (Harvest)	OB	0	3	
2782	Sullivan @ Fairview	OB	0	6	
3112	6th @ Campbell	OB	0	1	
2916	Sprague @ 15808 E (Zips)	OB	0	12	
3348	University @ 20th	OB	0	2	
4173	5th @ Sherman	OB	0	7	
3225	Country Vista @ Lib Lk Rd	IB	0	0	
2917	Sprague @ 15916 E	OB	0	0	
3901	8th @ Custer	OB	0	4	
4184	Alki Way @ Alki Av	SB	0	5	
3903	8th @ Carnahan	OB	0	7	
2885	Appleway @ Dartmouth	OB	0	19	
3551	Nevada @ Holland	OB	0	17	
3040	Sprague @ Airway Heights Corrections	OB	0	1	
3353	University @ 30th	OB	0	1	
4023	Cowley @ Hartson (ST Lukes)	OB	0	23	
3905	8th @ Woodlawn	OB	0	0	
3077	Russell @ 2nd	OB	0	5	
3906	8th @ Fancher	OB	0	14	
2703	1st @ W 800	OB	0	7	
3226	Barker @ Appleway	OB	0	17	
2830	University @ Sprague	IB	0	59	

IVR	Stop Name	DIR	Boards	Alights	Location Type
3774	Trent @ 4503 E	WB	0	0	
3193	Arrive Havana @ Sprague Southbound	SB	0	127	
3775	Trent @ Florida	WB	0	2	
2705	Presley @ Holladay	OB	0	2	
3777	Trent @ Julia	WB	0	0	
3030	Trent @ Waterworks	EB	0	1	
3917	Park @ Valleyway	OB	0	3	
4240	McKeehan Way @ 6th	IB/CW	0	0	
4117	57th @ Ferrall	OB	0	8	
4059	Medical Lake Hwy @ Graham	IB	0	0	
3552	Nevada @ Westview	OB	0	25	
3573	16th @ Bowdish	IB	0	1	
3371	32nd @ Woodlawn	OB	0	2	
4164	Belt @ Rowan	IB	0	0	
3939	Hwy 2 @ Lawson (Yokes)	OB	0	51	
3993	Bank of America	IB	0	1327	
3115	Lawson @ 12th	OB	0	29	
2783	Sullivan @ Euclid	OB	0	3	
3941	Fairchild @ Spaatz	OB	0	3	
2757	Presley @ 1st	IB	0	0	
4128	Betz @ 6th	CW	0	1	
4001	Trent @ Havana	EB	0	0	
3460	University @ 20th	IB	0	0	
3163	6th @ Campbell	IB	0	0	
2737	6th @ Oak	OB/CCW	0	19	
4003	Indiana @ 12718 E (Olympic Boat)	OB	0	5	
4131	Broadway @ Sargent	OB	0	3	
4181	Country Vista @ Liberty Lake Rd	OB	0	1	
4132	Argonne @ Trent	OB	0	43	
2825	University @ Mission	OB	0	10	
3554	Hawthorne @ Nevada	OB	0	11	
2918	Sprague @ Conklin	OB	0	5	
3506	Sullivan @ Marietta	OB	0	5	
3412	Sullivan @ 16th	IB	0	8	
3523	North Foothills @ Madelia	OB	0	6	
4013	Trent @ Havana	WB	0	1	
3378	Evergreen @ 28th	OB	0	1	
4194	57th @ Palouse Hwy	IB	0	2	
4138	Appleway @ Corbin	OB	0	11	

IVR	Stop Name	DIR	Boards	Alights	Location Type
4196	57th @ Regal	OB	0	3	
4139	Appleway @ Long	OB	0	2	
3188	5th @ Havana	OB	0	0	
3964	Mission @ Herald	OB	0	0	
3418	16th @ E. 14204	IB	0	0	
3557	Whitworth @ Wall	IB	0	0	
2828	University @ Valleyway	OB	0	8	
3966	University @ Sinto	OB	0	1	
3078	Russell @ 6th	OB	0	6	
3727	Alberta @ Columbia	OB	0	4	
3301	Francis @ Crestline	OB	0	0	
3812	Park @ Valleyway	IB	0	0	
4215	16th @ University	OB	0	3	
3969	University @ Maxwell	IB	0	0	
3466	University @ 7th	IB	0	4	
3728	Alberta @ Decatur	OB	0	13	
2709	Salnave @ Lincoln	OB	0	4	
3971	Mission @ Herald	IB	0	0	
4222	Northwest Blvd @ D Street	OB	0	4	
2807	Appleway @ Signal	OB	0	5	
2704	Presley @ 1st	OB	0	2	
3729	Alberta @ Francis (Midwick)	OB	0	2	
2739	Elm @ 7th	OB/CCW	0	213	
2808	Signal @ Mission	OB	0	40	
2706	Presley @ Salnave	OB	0	15	Shelter
3975	16th @ Evergreen	OB	0	3	
2791	Sullivan @ Central Pre-mix light	IB	0	0	
4152	Mission @ Bitterroot	OB	0	5	
3197	2nd @ Lincoln	IB	0	2	
3558	Hawthorne @ College	IB	0	0	
4239	McKeehan Way @ 6th	OB/CCW	0	0	
3509	Mission @ Evergreen	IB	0	2	
4241	McKeehan Way @ Sports Complex	IB	0	0	
2823	Mission @ Woodruff	OB	0	1	
3637	5th @ Greene	OB	0	21	
3258	2nd @ Wall	IB	0	0	
3572	16th @ Union	IB	0	1	
3261	Mukogawa Institute	OB	0	0	
2741	C Street @ 5th	IB	0	5	



IVR	Stop Name	DIR	Boards	Alights	Location Type
2708	Salnave @ Hattie	OB	0	2	
3664	Alberta @ Francis (Midwick)	IB	0	0	
4161	Rowan @ Cannon	OB	0	0	
3514	Mission @ Woodlawn	IB	0	0	
2780	Central Pre-mix light	OB	0	1	
2221	14th @ Madison	OB	0	4	
2235	Bernard @ 33rd	OB	0	2	
2596	Campbell @ Hallett	IB	0	0	
1601	Stevens @ Main	IB	0	26	
1900	Jackson @ Thor	OB	0	1	
1008	Stevens @ Spokane Falls Blvd	IB	0	61	
2583	Pine @ Fancher	OB	0	0	
1701	Standard @ Cozza	OB	0	7	
2229	Lincoln @ 26th	OB	0	8	
1238	Wellesley @ I Street	OB	0	0	
1178	A Street @ Summit	OB	0	6	
1928	Greene @ Augusta	NB	0	151	
1056	Clarke @ Ash	OB	0	0	
1240	Wellesley @ Warren	OB	0	5	
2577	Maple @ Pine	IB	0	0	
1147	Maple @ Pacific	OB	0	12	
2106	Havana @ Ferry	SB	0	2	
2385	Rockwood Bl @ 9th Av	OB	0	2	
2601	Lefevre @ Waterfront Park	IB	0	7	
2386	Rockwood Bl @ Cowley	OB	0	22	
1342	Francis @ Indian Trail	OB	0	2	
1241	Wellesley @ Rustle	OB	0	9	
1175	A Street @ Dean	OB	0	18	
2395	Southeast Blvd @ 27th	OB	0	23	
1180	Summit @ Cochran	OB	0	9	
1346	Indian Trail @ Woodside	OB	0	3	
1182	Mission @ Nettleton	OB	0	13	
1347	Indian Trail @ Weile	OB	0	2	
2571	Hwy 2 @ West St	OB	0	10	
1359	Indian Trail @ Bedford	OB	0	3	
1025	7th @ Browne	OB	0	13	
1242	Wellesley @ Assembly	OB	0	18	
2580	Maple @ Pine	OB	0	0	
2402	Regal @ 44th	OB	0	38	

IVR	Stop Name	DIR	Boards	Alights	Location Type
2586	Lefevre @ Jefferson	OB	0	0	
1348	Indian Trail @ Fleming	OB	0	1	
2590	Lake @ Stanley	IB	0	0	
2404	Regal @ 53rd	OB	0	23	
2599	Lefevre @ Campbell	IB	0	0	
2405	Regal @ 55th	OB	0	29	
2112	2nd @ Myrtle	SB	0	0	
2406	Regal @ 57th	OB	0	0	
2608	4th @ Lefevre	IB	0	0	
2408	57th @ Cook	OB	0	0	
1710	Magnesium @ Standard	OB	0	19	
2410	57th @ Crestline	OB	0	3	
1979	Francis @ G Street	IB	0	0	
2411	57th @ Pittsburg	OB	0	1	
1177	A Street @ Sinto	OB	0	14	
1356	Indian Trail @ Navaho	OB	0	7	
1020	6th @ Bernard	OB	0	13	
2426	57th @ Cook	IB	0	2	
1711	Magnesium @ Hill n' Dale	OB	0	18	
1065	Clarke @ Ash	IB	0	0	
1234	G Street @ Longfellow	OB	0	6	
1031	4th @ Cowley	OB	0	3	
1355	Indian Trail @ Shawnee	OB	0	7	
1032	5th @ Chandler (Rockwood Clinic)	OB	0	6	
1021	Bernard @ 5th	OB	0	12	
1702	Standard @ Dakota	OB	0	4	
2572	Lefevre @ 4th	OB	0	15	
1703	Standard @ Lincoln	OB	0	7	
2574	4th @ Minnie	OB	0	0	
1967	Francis @ Perry	OB	0	2	
2576	Maple @ Pine	OB	0	0	
1428	Rowan @ Nettleton	OB	0	5	
1352	Indian Trail @ Strong Rd	OB	0	5	
1704	Lincoln @ Dakota	OB	0	4	
2581	Pine @ Poplar	OB	0	0	
1975	Francis @ Wall	OB	0	11	
2585	Hwy 902 @ Waterfront Park	OB	0	0	
1080	Government Way @ N 508	OB	0	0	
2587	Lefevre @ Campbell	OB	0	0	

IVR	Stop Name	DIR	Boards	Alights	Location Type
1206	Mallon @ Flour Mill	OB	0	5	
1969	Francis @ Cincinnati	OB	0	0	
2297	Wall @ 1st	IB	0	15	
1353	Indian Trail @ Lowell	OB	0	8	
1349	Indian Trail @ Excell Ave	OB	0	2	
1851	Cowley @ 9th Ave	OB	0	35	
2479	Sacred Heart Driveway @ 9th Ave	OB	0	0	
2600	Lefevre @ Jefferson	IB	0	1	
1878	Riverpoint Higher Education Park	OB	0	0	
2602	Pine @ Fancher	IB	0	1	
1358	Indian Trail @ Ridgecrest	OB	0	4	
2114	2nd @ Freya	SB	0	1	
1022	5th @ McClellan	OB	0	34	
2350	29th @ Martin	OB	0	12	
2527	Jefferson @ 1st	OB	0	0	
1009	Wall @ Spokane Falls Blvd	IB	0	27	
2528	Jefferson @ 2nd	OB	0	0	
2233	29th @ Bernard	OB	0	2	
2212	5th @ Monroe	OB	0	3	
1172	Broadway @ Lindeke	OB	0	18	
2532	Sunset @ Assembly	OB	0	7	
1173	Broadway @ A Street	OB	0	27	
2533	Sunset @ Royal	OB	0	3	
1024	5th @ Division	OB	0	33	
2213	5th @ Madison	OB	0	3	
1176	A Street @ Boone	OB	0	24	
1259	Northwest Blvd @ Alice	IB	0	0	
1063	Clarke @ W 2007	IB	0	0	
1705	Lincoln @ Wilding	OB	0	5	
3262	Mukogawa Institute	IB	0	0	Shelter
1632	Nevada @ Joseph	OB	0	11	
1382	Francis @ Belt	IB	0	1	
1350	Indian Trail @ Kathleen	OB	0	6	
2244	37th @ Helena	OB	0	1	
1287	Maple @ Everett	OB	0	3	
1694	Lidgerwood @ Francis	OB	0	1	
1444	Rowan @ Belt	OB	0	5	
2667	Airport Dr @ Spotted	OB	0	12	
2299	Grove @ 12th	OB	0	4	

IVR	Stop Name	DIR	Boards	Alights	Location Type
1354	Indian Trail @ Barnes	OB	0	12	
2555	Hwy 2 @ Craig	OB	0	20	
1927	Greene @ Mission	NB	0	30	
2337	Grand @ 20th	OB	0	10	

## Table 2 – New Stop Locations That Meet 25 Boardings per Day

As set forth in *Connect Spokane – A Comprehensive Plan for Public Transportation, Section SI-3.3 Shelters and Awnings*, stops with shelters funded by Spokane Transit must meet the following criteria:

- 1) 25 or more weekday average boardings
- 2) Transfer point between two or more routes
- 3) Adjacent to a ridership generator with a high percentage of riders of limited mobility.

IVR	Stop Name	DIR	2015 Boards	2014 Boards
2436	Southeast Blvd @ Regal	IB	63	13
1194	A Street @ Broadway	IB	58	22
4159	Spokane Falls Blvd @ WSU School o	IB	47	18
4088	Lib Lk Rd @ Country Vista (McDonalds)	IB	38	14
1411	Monroe @ Frederick	OB	37	6
1516	Ruby @ Montgomery	OB	35	23
1655	Nevada @ Gordon	IB	35	21
1412	Monroe @ Dalton	OB	34	16
1662	Hamilton @ Illinois	IB	34	17
3623	3rd & Pine	OB	33	23
2365	29th @ Stone	IB	33	14
3837	5th @ Haven	IB	32	24
2286	14th @ Madison	IB	31	2
1763	Washington @ Mission	OB	31	23
1597	Division @ Boone	IB	31	17
2869	Sprague @ Carnahan	OB	30	23
1217	Maple @ Maxwell	OB	30	23
1852	Division @ 6th Ave	IB	30	25
3396	Sullivan @ 4th	OB	29	24

IVR	Stop Name	DIR	2015 Boards	2014 Boards
1616	Hamilton @ Illinois	OB	29	22
1195	Broadway @ Lindeke	IB	29	18
3398	Indiana @ Hanson Cntr Signal Light	IB/OB	28	24
1517	Ruby @ Jackson	OB	28	22
3015	Mission @ Hamilton	OB	28	24
1263	Northwest Blvd @ Hemlock	IB	28	21
1584	Division @ Longfellow	IB	27	11
2952	Sprague @ Evergreen	IB	27	24
2955	Sprague @ McDonald	IB	27	24
4200	Sprague @ Haven	IB	27	20
1397	Ash @ Grace	IB	27	20
3490	Pines @ Sprague	OB	26	18
1071	Sprague @ Jefferson	OB	26	18
2949	Sprague @ Adams	IB	26	22
1162	Courthouse (Broadway @ Madison)	OB	26	19
3085	Mission @ Crestline	IB	26	24
2567	Hayford @ 9th Av	IB	26	10
1410	Monroe @ Grace	OB	26	14
1644	Nevada @ Central	IB	26	19
1646	Nevada @ Rowan	IB	26	13
1647	Nevada @ Everett	IB	26	15
1045	6th @ Stevens	IB	26	22
2966	Sprague @ Felts	IB	26	11
3977	Argonne @ Montgomery	IB	26	21
2359	29th @ Ray	SB	25	14
1604	Washington @ Main	OB	25	18