

GENERAL NOTES

- 1. WORK AND MATERIALS SHALL COMPLY WITH THE REQUIREMENTS AND STANDARDS OF THE AUTHORITIES HAVING JURISDICTION. IF STANDARDS ARE NOT PROVIDED BY THE AUTHORITIES HAVING JURISDICTION, WORK AND MATERIALS SHALL COMPLY WITH THE MOST CURRENT EDITION OF THE STANDARD SPECIFICATIONS FOR ROAD, BRIDGE, AND MUNICIPAL CONSTRUCTION AS JOINTLY PROMULGATED BY THE WASHINGTON STATE DEPARTMENT OF TRANSPORTATION (WSDOT) AND THE WASHINGTON STATE CHAPTER OF THE AMERICAN PUBLIC WORKS ASSOCIATION.
2. THE CONTRACTOR SHALL CALL THE UNDERGROUND SERVICE ALERT ONE-CALL NUMBER 1-800-424-5555 TWO BUSINESS DAYS PRIOR TO EXCAVATION.
3. INFORMATION ON EXISTING CONDITIONS SHOWN ON THESE PLANS WAS OBTAINED FROM A SURVEY PERFORMED BY COFFMAN ENGINEERS. THE CONTRACTOR SHALL FIELD VERIFY EXISTING CONDITIONS AND REQUIRED ELEVATIONS AT THE SUBJECT SITE. VERIFY THE LOCATION AND SIZE OF EXISTING UTILITIES BEFORE PROCEEDING WITH CONSTRUCTION ACTIVITIES, INCLUDING UNDERGROUND AND OVERHEAD UTILITIES, UTILITY STRUCTURES, POINTS OF CONNECTION, AND UTILITY CROSSINGS. NOTIFY THE ENGINEER OF ANY DISCREPANCIES OR EXCEPTIONS ENCOUNTERED PRIOR TO PROCEEDING. ANY COSTS INCURRED AS A RESULT OF THE CONTRACTOR'S FAILURE TO VERIFY EXISTING CONDITIONS PRIOR TO BEGINNING CONSTRUCTION SHALL BE BORNE BY THE CONTRACTOR.
4. THE CONTRACTOR SHALL HAVE A COMPLETE SET OF APPROVED PLANS ON THE JOB SITE WHENEVER CONSTRUCTION IS IN PROGRESS.
5. THE DRAWINGS INDICATE LOCATIONS, DIMENSIONS, REFERENCES, AND TYPICAL DETAILS OF CONSTRUCTION. THE DRAWINGS DO NOT INDICATE EVERY CONDITION. WORK NOT FULLY DETAILED SHALL BE OF CONSTRUCTION SIMILAR TO PARTS THAT ARE FULLY DETAILED.
6. THE CONTRACTOR SHALL OBTAIN THE APPROPRIATE APPROVALS AND PERMITS FROM THE AUTHORITIES HAVING JURISDICTION PRIOR TO PROCEEDING WITH CONSTRUCTION ACTIVITIES. THE CONTRACTOR SHALL COORDINATE WITH THE AUTHORITIES HAVING JURISDICTION TO CONFIRM INSPECTION, TESTING, AND CERTIFICATION REQUIREMENTS.
7. CONSTRUCTION SHALL COMPLY WITH THE AMERICANS WITH DISABILITIES ACT ACCESSIBILITY GUIDELINES (ADAAG).
8. EXISTING PROPERTY CORNERS AND SURVEY MONUMENTS SHALL BE PROTECTED DURING CONSTRUCTION. ANY DAMAGED OR OBLITERATED CORNERS OR MONUMENTS SHALL BE RE-ESTABLISHED BY A PROFESSIONAL SURVEYOR AT THE CONTRACTOR'S EXPENSE. CONTRACTOR SHALL NOTIFY STA OF ANY DAMAGE/REPAIRS.
9. THE CONTRACTOR SHALL BE RESPONSIBLE FOR TRAFFIC CONTROL IN ACCORDANCE WITH THE MANUAL OF UNIFORM TRAFFIC CONTROL DEVICES (MUTCD) STANDARDS. COORDINATE REQUIREMENTS WITH THE AUTHORITIES HAVING JURISDICTION, INCLUDING WSDOT, CITY OF SPOKANE, AIRWAY HEIGHTS, AND SPOKANE COUNTY.
10. SAFETY STANDARDS AND REQUIREMENTS SHALL BE THE RESPONSIBILITY OF THE CONTRACTOR AND COMPLIED WITH AS SET FORTH BY OSHA.
11. THE CONTRACTOR SHALL HAVE THE APPROPRIATE LICENSES TO PERFORM THE SPECIFIED WORK IN CONFORMANCE WITH THE AUTHORITIES HAVING JURISDICTION.
12. MAINTAIN EXISTING UTILITIES AND PROTECT THEM AGAINST DAMAGE DURING CONSTRUCTION. DO NOT INTERRUPT EXISTING UTILITIES SERVING ADJACENT OCCUPIED OR OPERATING FACILITIES UNLESS AUTHORIZED IN WRITING BY OWNER AND AUTHORITIES HAVING JURISDICTION. PROVIDE TEMPORARY SERVICES DURING INTERRUPTIONS TO EXISTING UTILITIES, AS ACCEPTABLE TO OWNER AND AUTHORITIES HAVING JURISDICTION.
13. IF MATERIALS SUSPECTED OF CONTAINING HAZARDOUS MATERIALS ARE ENCOUNTERED, DO NOT DISTURB; IMMEDIATELY NOTIFY THE ENGINEER AND OWNER.
14. AREAS DISTURBED OR DAMAGED BY CONSTRUCTION ACTIVITIES SHALL BE CONSTRUCTED OR RESTORED TO ORIGINAL CONDITIONS OR BETTER, TO THE SATISFACTION OF THE OWNER, AT THE CONTRACTOR'S EXPENSE. THE CONTRACTOR IS RESPONSIBLE FOR DOCUMENTING CONDITIONS PRIOR TO CONSTRUCTION ACTIVITIES AND ANY DAMAGE THAT MAY OCCUR.
15. REMOVE WASTE MATERIALS AND DEBRIS FROM PROJECT SITE AND LEGALLY DISPOSE OF THEM IN AN EPA-APPROVED LANDFILL ACCEPTABLE TO AUTHORITIES HAVING JURISDICTION.
16. RECORD DRAWINGS NOTING AS-CONSTRUCTED CONDITIONS SHALL BE PROVIDED BY THE CONTRACTOR AT THE END OF CONSTRUCTION.

DEMOLITION NOTES

- 1. CONTRACTOR SHALL REVIEW PROJECT LIMITS FOR QUANTITY AND TYPE OF STRUCTURES, GROUND COVER AND DEBRIS AT THE TIME OF BIDDING AND SHALL INCORPORATE REMOVALS/DISPOSAL IN THEIR BID.
2. CONTRACTOR SHALL REMOVE ALL WASTE MATERIAL AND DEBRIS FROM SITE AND LEGALLY DISPOSE OF IN SUITABLE LOCATIONS OFF-SITE.
3. CONTRACTOR SHALL OBTAIN ALL CONSTRUCTION APPROVALS/PERMITS FROM GOVERNING AGENCIES PRIOR TO ANY CONSTRUCTION ACTIVITY.
4. THE CONTRACTOR SHALL TAKE EFFECTIVE ACTION TO PREVENT THE FORMATION OF ANY AIRBORNE DUST NUISANCE AND SHALL BE RESPONSIBLE FOR ANY DAMAGE RESULTING FROM FAILURE TO FOLLOW GOVERNING AGENCIES GUIDELINES.
5. CONTRACTOR IS RESPONSIBLE TO REMOVE ANY AND ALL ITEMS NOT OTHERWISE LISTED HEREIN THAT CONFLICT WITH THE CONSTRUCTION OF THE PROJECT. CONTRACTOR SHALL CONTACT ENGINEER IMMEDIATELY TO DETERMINE ANY ITEMS NOT SHOWN ON THE PLANS THAT MUST BE REMOVED. FAILURE TO DO SO DOES NOT RELIEVE CONTRACTOR OF COST RESPONSIBILITY FOR REMOVING ITEMS REQUIRED.
6. REMOVE OBSTRUCTIONS, TREES, SHRUBS, GRASS AND OTHER VEGETATION TO PERMIT INSTALLATION OF NEW CONSTRUCTION. REMOVAL OF TREES AND SHRUBS SHALL INCLUDE DIGGING OUT STUMPS AND OBSTRUCTIONS AND GRUBBING ROOTS. REMOVAL OF TREES IN AREAS ADJACENT TO TREES THAT ARE TO REMAIN AND BE PROTECTED SHALL BE LIMITED TO TREE REMOVAL AND GRINDING OF STUMP TO 3" BELOW FINISHED GRADE. COORDINATE ANY REMOVAL OF THESE ITEMS WITH STA AND ENGINEER. REFER TO CITY OF SPOKANE TREE NOTES FOR WORK ON TREES AND SHRUBS IN THE CITY OF SPOKANE.
7. ALL CONCRETE AND ASPHALT SURFACES INDICATED TO RE REMOVED, SHALL BE SAWCUT.
8. LOCATIONS OF UNDERGROUND UTILITIES SHOWN ARE APPROXIMATE AND MAY NOT HAVE BEEN VERIFIED IN THE FIELD. NO GUARANTEE IS MADE AS TO THE ACCURACY OR COMPLETENESS OF THE INFORMATION SHOWN. THE CONTRACTOR IS RESPONSIBLE TO DETERMINE THE EXISTENCE AND LOCATION OF UTILITIES SHOWN ON THESE PLANS BY COORDINATING WITH UTILITY COMPANIES AND LOCATING SERVICES IN ADVANCE OF DEMOLITION CONSTRUCTION. ANY COSTS INCURRED AS A RESULT OF CONTRACTOR'S FAILURE TO VERIFY LOCATIONS OF EXISTING UTILITIES PRIOR TO BEGINNING CONSTRUCTION SHALL BE BORNE BY THE CONTRACTOR.
9. ALL EXISTING IMPROVEMENTS TO REMAIN THAT BECOME DAMAGED DURING CONSTRUCTION SHALL BE COMPLETELY RESTORED TO THE SATISFACTION OF THE OWNER, AT THE CONTRACTOR'S SOLE EXPENSE. IT SHALL BE THE RESPONSIBILITY OF THE CONTRACTOR TO DOCUMENT PRIOR DAMAGES.

EROSION & SEDIMENT CONTROL NOTES

- 1. INSPECT ALL ROADWAYS, AT THE END OF EACH DAY, ADJACENT TO THE CONSTRUCTION ACCESS ROUTE. IF IT IS EVIDENT THAT SEDIMENT HAS BEEN TRACKED OFF SITE AND/OR BEYOND THE ROADWAY APPROACH, CLEANING IS REQUIRED.
2. IF SEDIMENT REMOVAL IS NECESSARY PRIOR TO STREET WASHING, IT SHALL BE REMOVED BY SHOVELING OR PICKUP SWEEPING AND TRANSPORTED TO A CONTROLLED SEDIMENT DISPOSAL AREA.
3. IF STREET WASHING IS REQUIRED TO CLEAN SEDIMENT TRACKED OFF SITE, ONCE SEDIMENT HAS BEEN REMOVED, STREET WASH WASTEWATER SHALL BE CONTROLLED BY PUMPING BACK ON-SITE OR OTHERWISE PREVENTED FROM DISCHARGING INTO SYSTEMS TRIBUTARY TO WATERS OF THE STATE.
4. RESTORE CONSTRUCTION ACCESS ROUTE EQUAL TO OR BETTER THAN THE PRE-CONSTRUCTION CONDITION.
5. RETAIN THE DUFF LAYER, NATIVE TOPSOIL, AND NATURAL VEGETATION IN AN UNDISTURBED STATE TO THE MAXIMUM EXTENT PRACTICAL.
6. INSPECT SEDIMENT CONTROL BMPs DAILY, PARTICULARLY DURING A STORM EVENT, AND AFTER ANY DISCHARGE FROM THE SITE (STORMWATER OR NON-STORMWATER). THE INSPECTION FREQUENCY MAY BE REDUCED TO ONCE A MONTH IF THE SITE IS STABILIZED AND INACTIVE.
7. CONTROL FUGITIVE DUST FROM CONSTRUCTION ACTIVITY IN ACCORDANCE WITH THE STATE AND/OR LOCAL AIR QUALITY CONTROL AUTHORITIES WITH JURISDICTION OVER THE PROJECT AREA. DO NOT USE WATER WHEN IT MAY DAMAGE ADJACENT CONSTRUCTION OR CREATE HAZARDOUS OR OBJECTIONABLE CONDITIONS, SUCH AS ICE, FLOODING, AND POLLUTION.
8. STABILIZE EXPOSED UNWORKED SOILS (INCLUDING STOCKPILES), WHETHER AT FINAL GRADE OR NOT, WITHIN 10 DAYS DURING THE REGIONAL DRY SEASON (JULY 1 THROUGH SEPTEMBER 30) AND WITHIN 5 DAYS DURING THE REGIONAL WET SEASON (OCTOBER 1 THROUGH JUNE 30). SOILS MUST BE STABILIZED AT THE END OF A SHIFT BEFORE A HOLIDAY WEEKEND IF NEEDED BASED ON THE WEATHER FORECAST. THIS TIME LIMIT MAY ONLY BE ADJUSTED BY A LOCAL JURISDICTION WITH A "QUALIFIED LOCAL PROGRAM," IF IT CAN BE DEMONSTRATED THAT THE RECENT PRECIPITATION JUSTIFIES A DIFFERENT STANDARD AND MEETS THE REQUIREMENTS SET FORTH IN THE CONSTRUCTION STORMWATER GENERAL PERMIT.
9. PROTECT INLETS, DRYWELLS, CATCH BASINS AND OTHER STORMWATER MANAGEMENT FACILITIES FROM SEDIMENT, WHETHER OR NOT FACILITIES ARE OPERABLE.
10. KEEP ROADS ADJACENT TO INLETS CLEAN.
11. INSPECT INLETS DAILY, PARTICULARLY DURING STORM EVENTS.
12. CONSTRUCT STORMWATER CONTROL FACILITIES (DETENTION/RETENTION STORAGE POND OR SWALES) BEFORE GRADING BEGINS. THESE FACILITIES SHALL BE OPERATIONAL BEFORE THE CONSTRUCTION OF IMPERVIOUS SITE IMPROVEMENTS.
13. STOCKPILE MATERIALS (SUCH AS TOPSOIL) ON SITE, KEEPING OFF OF ROADWAY AND SIDEWALKS. CONTRACTOR SHALL ENSURE STOCKPILE MATERIALS STAY WITHIN THE PUBLIC RIGHT-OF-WAY. IF SPACE RESTRICT THE CONTRACTORS ABILITY TO STOCKPILE MATERIALS IN THE PUBLIC RIGHT-OF-WAY, THEN STOCKPILING WILL BE PROHIBITED AND ALL MATERIALS SHALL BE BROUGHT TO JOB SITE AS THEY ARE NEEDED.
14. COVER, CONTAIN AND PROTECT ALL CHEMICALS, LIQUID PRODUCTS, PETROLEUM PRODUCT, AND NONINERT WASTES PRESENT ON SITE FROM VANDALISM (SEE CHAPTER 173-304 WAC FOR THE DEFINITION OF INERT WASTE), USE SECONDARY CONTAINMENT FOR ON-SITE FUELING TANKS.
15. CONDUCT MAINTENANCE AND REPAIR OF HEAVY EQUIPMENT AND VEHICLES INVOLVING OIL CHANGES, HYDRAULIC SYSTEM REPAIRS, SOLVENT AND DE-GREASING OPERATIONS, FUEL TANK DRAIN DOWN AND REMOVAL, AND OTHER ACTIVITIES THAT MAY RESULT IN DISCHARGE OR SPILLAGE OF POLLUTANTS TO THE GROUND OR INTO STORMWATER RUNOFF USING SPILL PREVENTION MEASURES, SUCH AS DRIP PANS, CLEAN ALL CONTAMINATED SURFACES IMMEDIATELY FOLLOWING ANY DISCHARGE OR SPILL INCIDENT, IF RAINING OVER EQUIPMENT OR VEHICLE, PERFORM EMERGENCY REPAIRS ON SITE USING TEMPORARY PLASTIC BENEATH THE VEHICLE.
16. CONDUCT APPLICATION OF AGRICULTURAL CHEMICALS, INCLUDING FERTILIZERS AND PESTICIDES, IN SUCH A MANNER, AND AT APPLICATION RATES, THAT INHIBITS THE LOSS OF CHEMICALS INTO STORMWATER RUNOFF FACILITIES. AMEND MANUFACTURER'S RECOMMENDED APPLICATION RATES AND PROCEDURES TO MEET THIS REQUIREMENT, IF NECESSARY.
17. INSPECT ON A REGULAR BASIS (AT A MINIMUM WEEKLY, AND DAILY DURING/AFTER A RUNOFF PRODUCING STORM EVENT) AND MAINTAIN ALL EROSION AND SEDIMENT CONTROL BMPs TO ENSURE SUCCESSFUL PERFORMANCE OF THE BMPs. NOTE THAT INLET PROTECTION DEVICES SHALL BE CLEANED OR REMOVED AND REPLACED BEFORE SIX INCHES OF SEDIMENT CAN ACCUMULATE.
18. REMOVE TEMPORARY ESC BMPs ONCE THE WORK AREA HAS REACHED SUBSTANTIAL COMPLETION. WITHIN 30 DAYS AFTER THE TEMPORARY BMPs ARE NO LONGER NEEDED. PERMANENTLY STABILIZE AREAS THAT ARE DISTURBED DURING THE REMOVAL PROCESS.
19. PROVIDE TEMPORARY EROSION AND SEDIMENTATION CONTROL MEASURES TO PREVENT SOIL EROSION AND DISCHARGE OF SOIL-BEARING WATER RUNOFF OR AIRBORNE DUST TO ADJACENT PROPERTIES, ACCORDING TO REQUIREMENTS OF AUTHORITIES HAVING JURISDICTION. THE CONTRACTOR SHALL COMPLY WITH ALL REQUIREMENTS FOR STORM WATER DISCHARGE ASSOCIATED WITH CONSTRUCTION ACTIVITY, INCLUDING OBTAINING THE APPROPRIATE PERMITS AND APPROVALS.
20. EROSION CONTROL MEASURES IN ADDITION TO THOSE INDICATED AS PART OF THIS PLAN MAY BE REQUIRED DUE TO UNFORESEEN CONDITIONS, IF THE MEASURES DO NOT FUNCTION AS INTENDED, OR IF THE AUTHORITIES HAVING JURISDICTION DETERMINE INDICATED MEASURES ARE INADEQUATE.
21. CONCRETE WASHOUT MUST BE PERFORMED OFF-SITE OR IN BINS THAT CAN BE REMOVED FROM THE JOB SITE AT THE END OF EACH WORKDAY.
22. LITTER, CONSTRUCTION DEBRIS, AND CONSTRUCTION CHEMICALS THAT COULD BE EXPOSED TO STORM WATER MUST BE PREVENTED FROM BECOMING A POLLUTANT SOURCE IN STORM WATER DISCHARGES.

EARTHWORK & GRADING NOTES

- 1. SITE PREPARATION, GRADING, EXCAVATION AND FILL REQUIREMENTS BELOW THE PROPOSED IMPROVEMENTS, EMBANKMENTS, AND UTILITY TRENCHING SHALL BE COMPLETED IN CONFORMANCE WITH WSDOT STANDARD SPECIFICATIONS.
2. EXAMINE EXPOSED SUBGRADES AND BASE SURFACES FOR COMPLIANCE WITH REQUIREMENTS FOR DIMENSIONAL, GRADING, AND ELEVATION TOLERANCES. PREVENT SURFACE WATER AND GROUNDWATER FROM ENTERING EXCAVATIONS, FROM PONDING ON PREPARED SUBGRADES AND BASE SURFACES, AND FROM FLOODING PROJECT SITE AND SURROUNDING AREA. PROTECT SUBGRADES AND BASE SURFACES FROM SOFTENING, UNDERMINING, WASHOUT, DAMAGE BY RAIN OR WATER ACCUMULATION, AND AGAINST FREEZING TEMPERATURES AND FROST.
3. SPOT ELEVATIONS ARE FOR FINISH GRADE UNLESS OTHERWISE NOTED.
4. UNLESS ELEVATIONS AND/OR CONTOURS ARE OTHERWISE SHOWN, NEW FINISH GRADE SURFACES SHALL BE PLACED TO ALLOW FOR POSITIVE DRAINAGE TO RUNOFF COLLECTION DEVICES OR FACILITIES. MAINTAIN POSITIVE DRAINAGE AWAY FROM BUILDINGS. IF FIELD GRADE ADJUSTMENTS ARE REQUIRED, THE CONTRACTOR SHALL NOTIFY THE ENGINEER IMMEDIATELY.
5. GROUNDWATER OR UNANTICIPATED SUBSURFACE CONDITIONS SHALL BE REPORTED TO THE ENGINEER FOR ASSESSMENT AND RECOMMENDATIONS.
6. COMPACTION EFFORTS AND MASS GRADING SHALL BE MONITORED AND TESTED BY AN EXPERIENCED SOILS TECHNICIAN, UNDER THE SUPERVISION OF A LICENSED GEOTECHNICAL ENGINEER. CONTRACTOR TO HIRE AND COORDINATE. ALL RESULTS TO BE PROVIDED TO THE OWNER.

PAVING NOTES

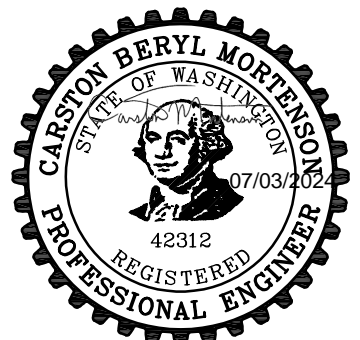
- 1. DO NOT APPLY PAVEMENT MATERIALS IF SUBGRADE IS WET OR EXCESSIVELY DAMP. OR IF RAIN IS IMMINENT OR EXPECTED BEFORE TIME REQUIRED FOR ADEQUATE CURE. SURFACE AND AIR TEMPERATURES SHALL CONFORM TO REQUIREMENTS OF WSDOT STANDARD SPECIFICATIONS.
2. COMPLY WITH WSDOT STANDARD SPECIFICATION 5-04 FOR HOT MIX ASPHALT PAVEMENT.
3. WHERE NEW ASPHALT PAVEMENT JOINS EXISTING ASPHALT, THE EXISTING ASPHALT SHALL BE SAWCUT TO A NEAT, VERTICAL EDGE AND TACKED WITH ASPHALT EMULSION IN ACCORDANCE WITH WSDOT SPECIFICATIONS.
4. COMPLY WITH WSDOT STANDARD SPECIFICATION 5-05 AND THE AMERICAN CONCRETE INSTITUTE (ACI) 301 REQUIREMENTS FOR MEASURING, MIXING, TRANSPORTING, AND PLACING CEMENT CONCRETE PAVEMENT.
5. APPLY PAVEMENT MARKING MATERIALS TO CLEAN, DRY PAVEMENT SURFACES ACCORDING TO WSDOT STANDARD SPECIFICATION 8-22. PAVEMENT MARKINGS SHALL COMPLY WITH THE MUTCD AND REQUIREMENTS OF THE AUTHORITIES HAVING JURISDICTION.
6. CONSTRUCTION STAKING FOR CURB AND GUTTER, PAVEMENT GRADES, SIDEWALK GRADES, AND ANY OTHER VERTICAL AND/OR HORIZONTAL ALIGNMENT SHALL BE PROVIDED BY A SURVEYING OR ENGINEERING FIRM CAPABLE OF PERFORMING SUCH WORK. CONSTRUCTION STAKING AS STATED ABOVE SHALL BE CONTRACTED WITH AND RESPONSIBILITY OF THE CONTRACTOR.

CITY OF SPOKANE TREE NOTES:

- 1. THE CITY OF SPOKANE'S MUNICIPAL CODE REQUIRES THAT TREE PRUNING, PLANTING, OR REMOVAL WORK WITHIN THE PUBLIC RIGHT-OF-WAY AND ON PUBLIC PROPERTY MUST BE PERFORMED BY A PERSON OR ENTITY WITH A COMMERCIAL TREE LICENSE.
2. ALL TREE PRUNING (CROWN OR ROOT) AND TREE REMOVAL WORK MUST BE PERFORMED BY AN INTERNATIONAL SOCIETY OF ARBORICULTURE (ISA) CERTIFIED ARBORIST OR CERTIFIED TREE WORKER. TREE CUTTING MUST BE DIRECTLY SUPERVISED BY AN ISA CERTIFIED ARBORIST OR CERTIFIED TREE WORKER.
3. ALL EQUIPMENT TO BE USED AND ALL WORK TO BE PERFORMED MUST BE IN FULL COMPLIANCE WITH THE MOST CURRENT REVISION OF THE AMERICAN NATIONAL STANDARDS INSTITUTE Z-133-2017, OR AS AMENDED.
4. FOR THE PURPOSE OF PROTECTING TREES IN THE RIGHT-OF-WAY DURING DEVELOPMENT, THE CONTRACTOR/DEVELOPER MAY INSTALL THE TREE PROTECTION ZONE IN ACCORDANCE WITH THE STANDARDS BELOW:
4.1 THE TREE PROTECTION ZONE (TPZ) WILL EITHER BE DETERMINED IN THE FIELD BY CITY OF SPOKANE URBAN FORESTRY STAFF OR ESTABLISHED BY THE CONTRACTED ARBORIST (LICENSED TREE COMPANY) FOR APPROVAL BY URBAN FORESTRY STAFF PRIOR TO EXCAVATION OR WORK BY THE FOLLOWING METHOD. THE TPZ SHALL BE EQUAL TO THE CRITICAL ROOT ZONE (CRZ) AS DEFINED BY THE INTERNATIONAL SOCIETY OF ARBORICULTURE (ISA); AN AREA EQUAL TO 1 FOOT RADIUS FROM THE BASE OF THE TREE'S TRUNK FOR EACH 1 INCH OF THE TREE'S DIAMETER AT 4.5 FEET ABOVE GRADE (REFERRED TO AS DIAMETER AT BRESTH HEIGHT OF DBH). TPZ MODIFICATIONS MAY BE MADE DUE TO CONSTRUCTION OBJECTIVES AND SITE INFRASTRUCTURE ON WITH PRIOR AUTHORIZATION BY URBAN FORESTRY STAFF.
4.2 THE AREA WITHIN THE TPZ SHALL BE MULCHED WITH 1-2 INCHES OF UNTREATED WOOD CHIPS, LEAVING A 1 FOOT RADIUS FROM THE TRUNK FREE OF MULCHING MATERIALS, UNLESS OTHERWISE PRE-APPROVED BY URBAN FORESTRY STAFF.
4.3 ALL TREES DESIGNATED FOR PROTECTION SHALL RECEIVE 5-10 GALLONS OF WATER PER CALIPER INCH EVERY SEVEN DAYS THROUGHOUT THE CONSTRUCTION PERIOD. THE AMOUNT AND FREQUENCY OF IRRIGATION MAY BE ADJUSTED AS NEEDED DUE TO TEMPERATURE FLUCTUATIONS AND SITE CONDITIONS. INSTALL TEMPORARY FENCING, 3' TALL MINIMUM, ORANGE PLASTIC CONSTRUCTION FENCING PER MANUFACTURER'S SPECIFICATIONS, LOCATED AS INDICATED OR OUTSIDE THE TPZ OF TREES TO PROTECT REMAINING VEGETATION FROM CONSTRUCTION DAMAGE. FENCING MUST BE MAINTAINED AT ALL TIMES DURING CONSTRUCTION. ALTERNATIVE OR MODIFIED FENCING MATERIAL MAY BE PERMITTED WITH PRIOR AUTHORIZATION BY URBAN FORESTRY STAFF.
4.4 WHERE EQUIPMENT IS NECESSARY TO REMOVE HARDSCAPES IN PROXIMITY OF A PROTECTED TREE, CONSTRUCTION PERSONNEL MUST EXHIBIT DUE CARE TO ENSURE NO DAMAGE OCCURS TO THE EXISTING ROOTS. IF ROOTS ARE ENCOUNTERED IN THE DEMO AREA, CONSULTATION WITH URBAN FORESTRY STAFF OR A CONTRACTED ARBORIST (LICENSED TREE COMPANY) IS REQUIRED TO DETERMINE BEST MANAGEMENT PRACTICE TO MEET CONSTRUCTION AND TREE PRESERVATION OBJECTIVES.
5. PROTECT TREE ROOT SYSTEMS FROM DAMAGE DUE TO NOXIOUS MATERIALS CAUSED BY RUNOFF OR SPILLAGE WHILE MIXING, PLACING, OR STORING CONSTRUCTION MATERIALS. PROTECT ROOT SYSTEMS FROM FLOODING, ERODING, OR EXCESSIVE WETTING CAUSED BY DEWATERING OPERATIONS.
6. DO NOT STORE CONSTRUCTION MATERIALS, DEBRIS, OR EXCAVATED MATERIAL WITHIN THE TPZ OF REMAINING TREES. DO NOT PERMIT VEHICLES OR FOOT TRAFFIC WITHIN THE TPZ; PREVENT SOIL COMPACTION OVER ROOT SYSTEMS.



221 N. Wall Street
Suite 500
Spokane, WA 99201
ph 509.328.2994
www.coffman.com



STA 2024 BUS STOP IMPROVEMENTS - PHASE 1

Spokane Transit Authority
1230 W. Boone Avenue
Spokane, Washington 99201

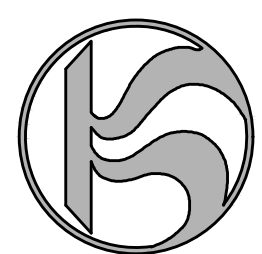


Table with 3 columns: REV, DATE, DESCRIPTION. Includes project number 2024-10942, drawn by DLS, checked by AS, and date 07/02/2024.

COFFMAN ENGINEERS INC.

SHEET TITLE:

GENERAL NOTES

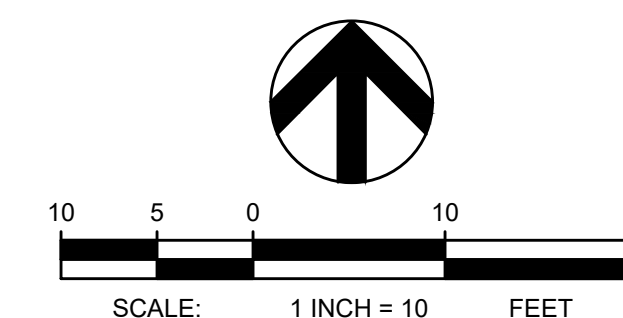
SHEET NO:

C-100

SHEET

COFFMAN.COM\PROJECTS\SPO\24\OBS\240382_STA_2024_BUS_STOPS_IMPROVEMENTS\0.DWG\GENERAL NOTES: SIN, AVRAMI - LAST SAVED: June 5, 2024 - PLOT DATE: 7/3/24

BID SET



TBM INFORMATION

TBM INFORMATION				
POINT #	NORTHING	EASTING	ELEVATION	DESCRIPTION
16	271862.45	2489564.44	2038.14	SET X
17*	271807.00	2489371.78	2037.46	SET X

* NOT SHOWN ON PLAN VIEW

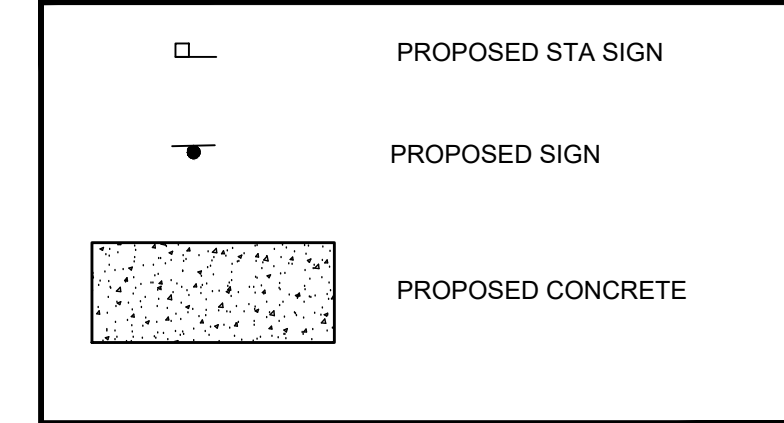
BENCH MARK NOTE

CONTRACTOR SHALL PROTECT ALL EXISTING PROPERTY CORNERS AND BENCH MARKS. ANY DAMAGE CAUSED BY CONSTRUCTION ACTIVITIES SHALL BE REMEDIATED AT THE CONTRACTOR'S EXPENSE.

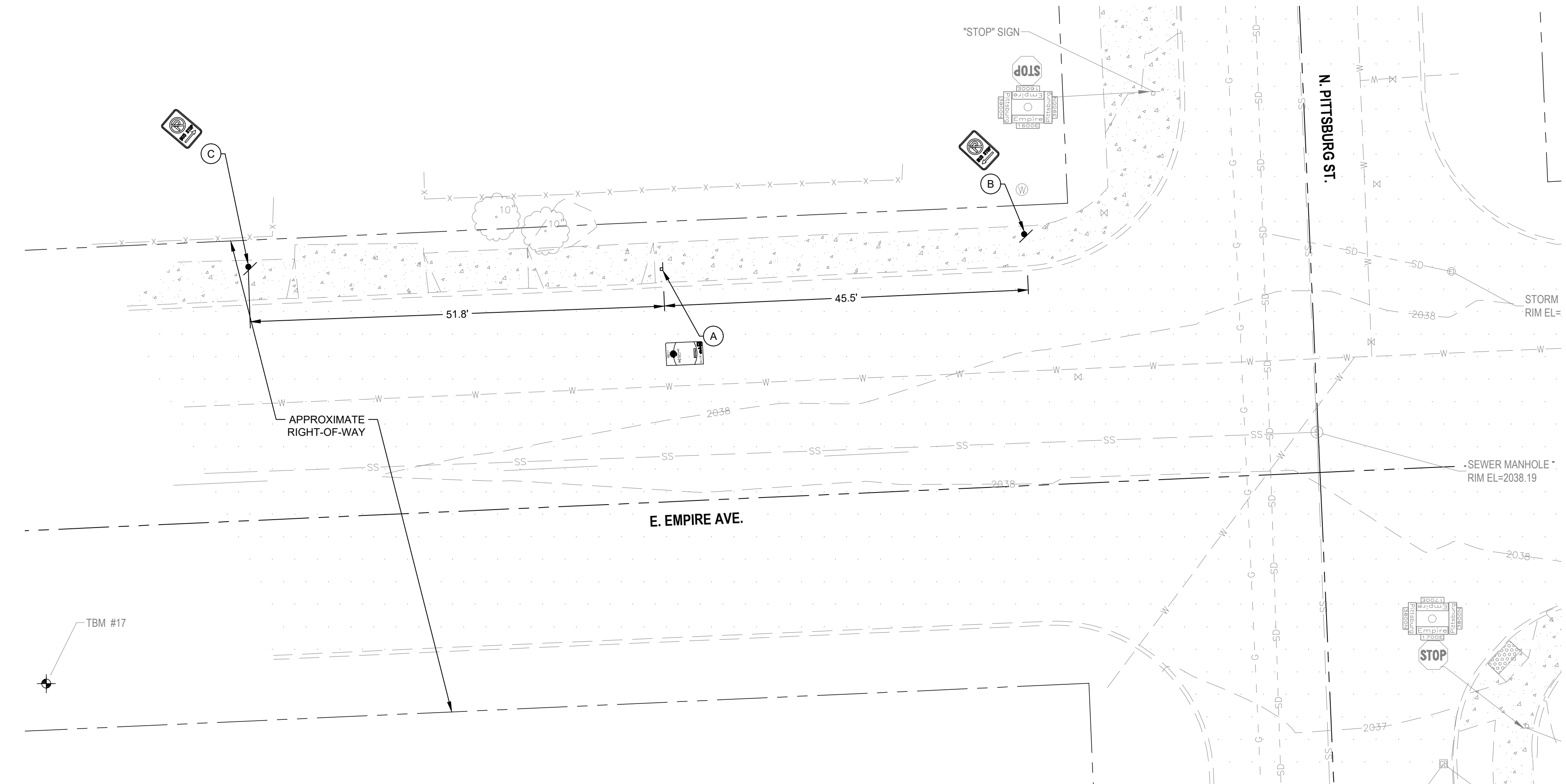
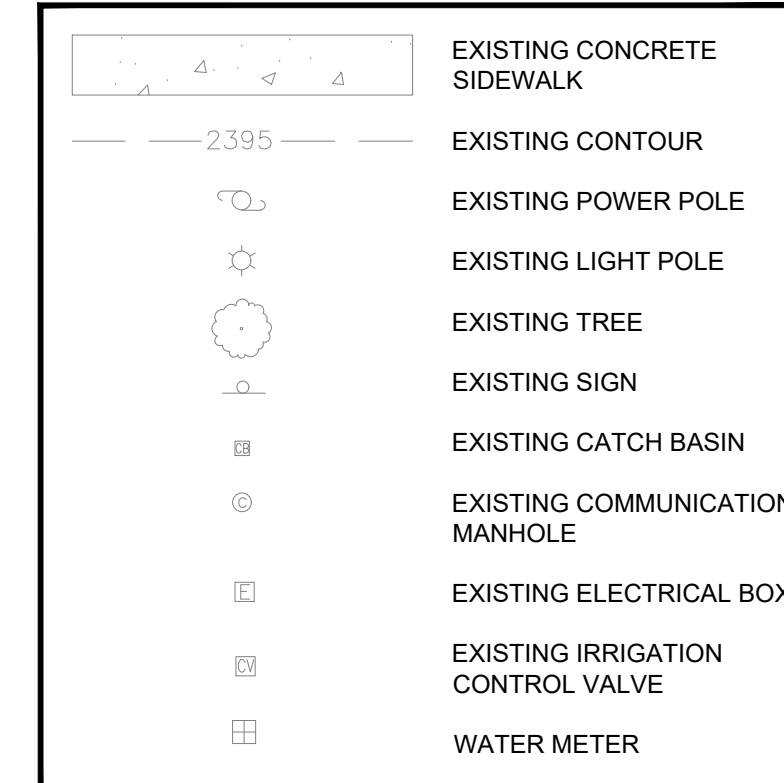
MONUMENT PRESERVATION NOTE

DISTURBING EXISTING SURVEY MONUMENTS (PROPERTY CORNERS OR KNOWN RECORDED MONUMENTS) IS A GROSS MISDEMEANOR PER RCW 58.04.015. CONTRACTOR SHALL PROTECT ALL EXISTING PROPERTY CORNERS. IF ANY MONUMENTS ARE IN AREAS THAT WILL BE DISTURBED, THE CONTRACTOR SHALL RETAIN A PROFESSIONAL LAND SURVEYOR TO FOLLOW WAC 332-120. ANY DAMAGE CAUSED BY CONSTRUCTION ACTIVITIES SHALL BE REMEDIATED AT THE CONTRACTOR'S EXPENSE.

LEGEND



EXISTING LEGEND



CONSTRUCTION NOTES

- REFER TO SHEET C-100 FOR GENERAL NOTES.
- LOCATE BUS STOP SIGN POST SO THAT NO POLES, TREES, SHELTERS, DRIVEWAYS, BUILDINGS, OR OTHER IMPEDIMENTS ARE WITHIN THE ADA CLEAR ZONE AND SO THAT SIGN IS VISIBLE TO PEDESTRIANS. THE ADA CLEAR ZONE IS DEFINED AS AN AREA 8' PERPENDICULAR TO THE CURB BY 5' PARALLEL TO THE CURB.
- THE RIGHT-OF-WAY/PROPERTY LINES ARE FOR ILLUSTRATION PURPOSES ONLY AND DOES NOT REPRESENT A BOUNDARY SURVEY BY COFFMAN ENGINEERS.
- OBSTRUCTION PERMITS MUST BE OBTAINED FOR CONSTRUCTION IN THE CITY OF SPOKANE PUBLIC RIGHT-OF-WAY. ALONG WITH THE TIME LIMITATIONS OF AN OBSTRUCTION PERMIT, REQUIREMENTS OF THIS PERMIT MAY ALSO INCLUDE TRAFFIC CONTROL MEASURES, WORK-HOUR TIME RESTRICTIONS, AND THE TYPE OF MATERIALS. COORDINATE REQUIREMENTS FOR TRAFFIC CONTROL WITH THE CITY OF SPOKANE.
- PROPOSED CONCRETE SHALL MATCH ADJACENT EXISTING TOP BACK OF CURB AND SIDEWALK ELEVATIONS, WHERE APPLICABLE.
- CONTRACTOR SHALL ADJUST/REVISE EXISTING IRRIGATION SYSTEM TO ACCOUNT FOR NEW CONCRETE IMPROVEMENTS. CONTRACTOR SHALL TEST ALL ADJUSTED/REVISED OR REPLACED IRRIGATION SYSTEMS TO CONFIRM THEY WORK PROPERLY WHEN DONE. COORDINATE WITH CITY WATER DEPARTMENT OR PRIVATE IRRIGATION SYSTEM OWNER, WHICHEVER OPERATES THAT SITE'S SYSTEM.
- PRIOR TO CONSTRUCTION, CONTRACTOR SHALL FIELD VERIFY THE EXACT LOCATION AND BURY DEPTH OF UNDERGROUND UTILITIES. IF THE BURY DEPTH DOES NOT MEET PURVEYORS STANDARDS, UTILITIES SHALL BE PROTECTED AND SLEEVED AND APPROVED BY UTILITY.
- CONTRACTOR SHALL INSTALL SIGN POST, STA AND THEIR CREWS TO INSTALL SIGN.
- CONTRACTOR TO REPAIR GRASS, MULCH, GRAVEL, AND ANY OTHER SURFACING ADJACENT IMPROVEMENTS TO PRECONSTRUCTION CONDITIONS ONCE IMPROVEMENTS HAVE BEEN INSTALLED.

KEY NOTES

- INSTALL TYPE P SIGN POST WITH A TYPE E CONNECTION PER CITY OF SPOKANE STANDARD PLAN G-10 AND G-10E. SIGN LOCATION SHALL CONFORM WITH DIMENSIONS SHOWN AND DETAIL 3, SHEET C-300. SIGN TO BE FLAGGED AWAY FROM ROADWAY, SEE SIGNING AND STRIPING GENERAL NOTES AS WELL AS CONSTRUCTION NOTE 8.
- INSTALL NEW R7-17A (L) SIGN - "NO PARKING BUS STOP" SIGN ON NEW TYPE P SIGN POST WITH A TYPE F CONNECTION PER CITY OF SPOKANE STANDARD PLAN G-10F AND G-20A.
- INSTALL NEW R7-17A (R) SIGN - "NO PARKING BUS STOP" SIGN ON NEW TYPE P SIGN POST WITH A TYPE F CONNECTION PER CITY OF SPOKANE STANDARD PLAN G-10F AND G-20A.

SIGNING AND STRIPING GENERAL NOTES

- TRAFFIC SIGN POST LOCATIONS SHALL BE FIELD LOCATED BY CITY OF SPOKANE, PRIOR TO INSTALLATION. THE CONTRACTOR SHALL CONTACT THE CITY OF SPOKANE TRAFFIC SIGNS AND MARKERS SUPERVISOR, AT 232-8800, AT LEAST FIVE CITY WORKDAYS PRIOR TO INSTALLATION, TO ARRANGE FOR A CITY REPRESENTATIVE TO FILED LOCATE SAID SIGN POSTS.
- FOR ALL TRAFFIC CONTROL SIGNS WITHIN THE RIGHT-OF-WAY: A SPEC. DRAWING SHALL BE SUBMITTED FOR APPROVAL, PRIOR TO MANUFACTURE, AND COMPLETED SIGNS SHALL BE PRESENTED FOR INSPECTION, PRIOR TO INSTALLATION, TO THE CITY OF SPOKANE TRAFFIC SIGNS AND MARKERS SUPERVISOR, AT 901 N. NELSON ST. AN APPOINTMENT IS NECESSARY. THIS INCLUDES ALL SIGNS ATTACHED TO SIGNALS, PHBs AND RRFBs.
- AT THE TIME OF INSTALLATION, ALL SIGNAGE AND STRIPING WITHIN THE RIGHT-OF-WAY SHALL BE COMPLETED ACCORDING TO THE MOST UP-TO-DATE CITY OF SPOKANE STANDARDS AND SPECIFICATIONS.
- TRAFFIC SIGNS REMOVED DURING ANY PHASE OF THE CONSTRUCTION PROCESS ARE THE CONTRACTOR'S PROPERTY AND ARE TO BE DISPOSED OF BY CONTRACTOR. THESE SIGNS ARE NOT TO BE REUSED.
- PAVEMENT MARKINGS ARE TO BE OBLITERATED PER CITY OF SPOKANE STANDARD SPECIFICATIONS (WATER-BLASTING). PAINTING OVER EXISTING MARKINGS IS NOT ALLOWED.
- ANY DAMAGE TO EXISTING MARKINGS DURING CONSTRUCTION SHALL BE REPAIRED BY THE CONTRACTOR.

THE EXISTING INFORMATION SHOWN ON THESE PLANS IS PER THE SURVEY COMPLETED BY: COFFMAN ENGINEERS 221 N WALL ST #500 SPOKANE, WA 99201 (509) 328-2994 DATED: 03/13/2024 THE CONTRACTOR SHALL VERIFY EXISTING SITE CONDITIONS AND CONTACT THE ENGINEER IF DISCREPANCIES ARE NOTED.

UTILITY STATEMENT
LOCATION OF EXISTING UNDERGROUND UTILITIES HAVE BEEN TAKEN FROM DRAWINGS AND FIELD LOCATES SUPPLIED BY THE APPROPRIATE UTILITY COMPANIES. UTILITY LOCATIONS SHOWN ON THIS DRAWING ARE APPROXIMATE ONLY. PRIOR TO BEGINNING ANY CONSTRUCTION, THE CONTRACTOR SHALL VERIFY THE EXACT LOCATION OF EACH UTILITY.



Know what's below.
Call before you dig.

STA 2024 BUS STOP
IMPROVEMENTS - PHASE 1
SPOKANE, WA

Spokane Transit Authority
1230 W. Boone Avenue
Spokane, Washington 99201

REV	DATE	DESCRIPTION

PROJ. NO. 2024-10942
DRAWN DLS
CHECKED AS
DATE 07/02/2024

© COFFMAN ENGINEERS INC.

SHEET TITLE:

EMPIRE AVE. &
PITTSBURG ST.
(WB)

SHEET NO:

C-205

SHEET

I:\COFFMAN\COM\PROJECTS\SP024\JOBS\240382 STA 2024 BUS STOPS IMPROVEMENTS\00 DWG\SP0240382 EMPIRE-PITTS.DWG:WB: SIN: AVPAM: LAST SAVED: July 9, 2024: PLOT DATE: 7/9/24

BID SET



STA 2024 BUS STOP
IMPROVEMENTS - PHASE 1

Spokane Transit Authority
1230 W. Boone Avenue
Spokane, Washington 99201

REV	DATE	DESCRIPTION

PROJ. NO. 2024-10942
DRAWN DLS
CHECKED AS
DATE 07/02/2024

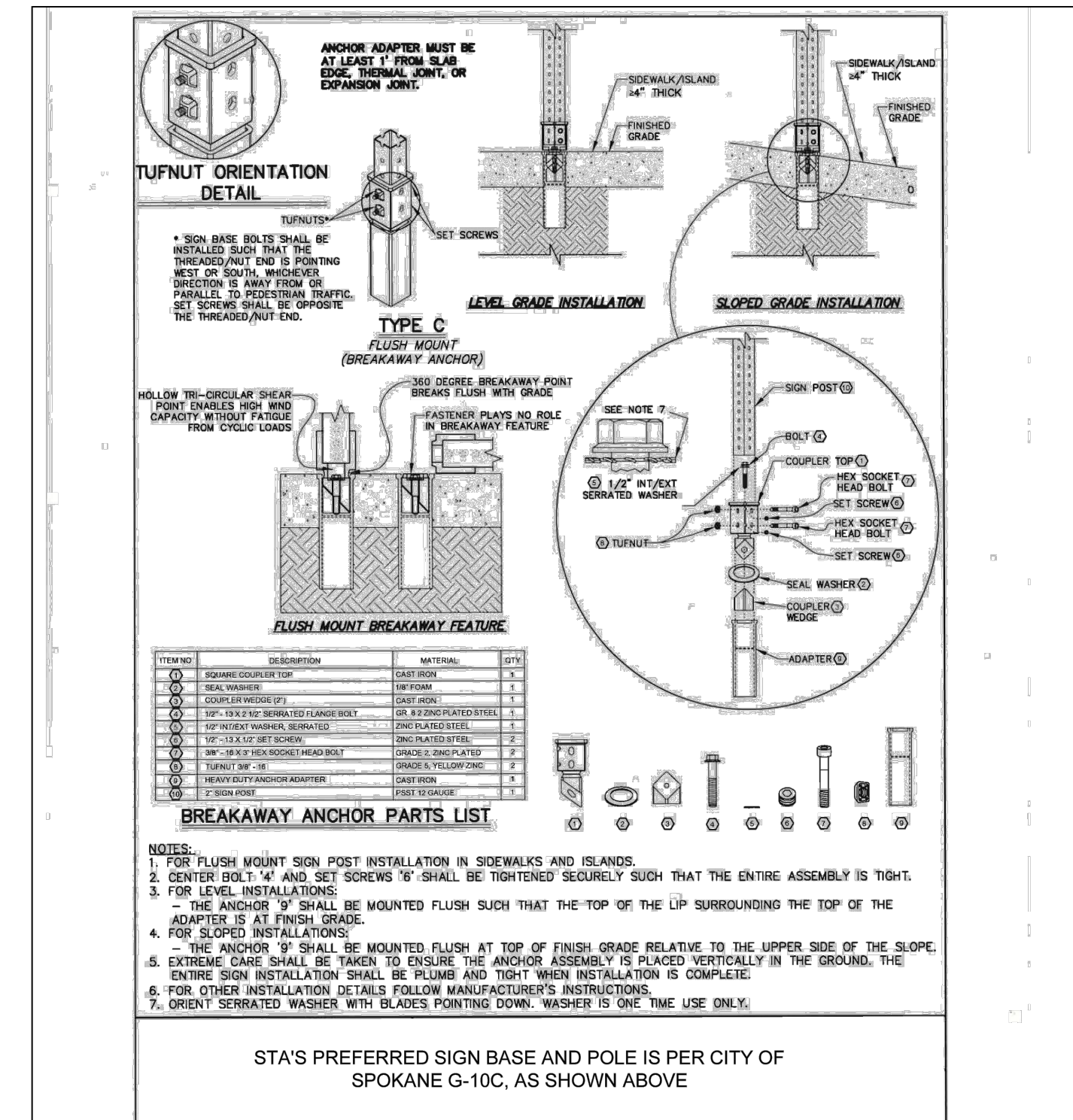
© COFFMAN ENGINEERS INC.

SHEET TITLE:
DETAILS

SHEET NO.:

C-300

SHEET



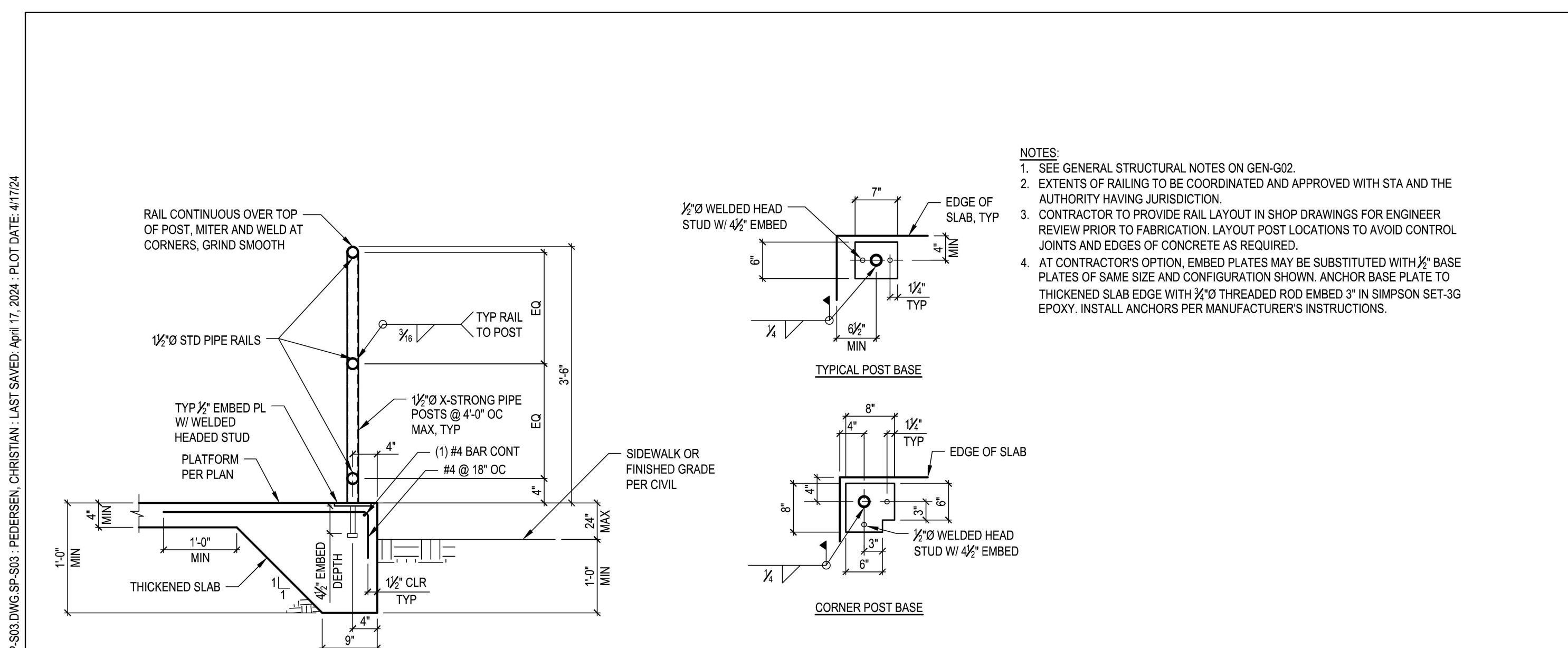
Spokane Transit Authority
1230 W. Boone Avenue
Spokane, Washington 99201

COFFMAN ENGINEERS
221 N. Wall Street, Suite 500
Spokane, WA 99201
ph 509.328.2994
www.coffman.com

TITLE: BUS STOP - SIGN BASE AND POLE		SCALE: NTS	
PROJECT:	STA - STANDARD DETAILS AND PLANS	SHEET NO.:	SP-C08
CLIENT:	SPOKANE TRANSIT AUTHORITY	PROJ. NO.:	232528
DATE:	04/16/24	CHECKED:	AS
		DRAWN:	DLS

2 SMALL BUS STOP SIGN MOUNTING
SPOKANE COUNTY, CITY OF AIRWAY HEIGHTS, SPOKANE INTERNATIONAL AIRPORT ONLY

SCALE: NTS



- NOTES:**
- SEE GENERAL STRUCTURAL NOTES ON GEN-G02.
 - EXTENTS OF RAILING TO BE COORDINATED AND APPROVED WITH STA AND THE AUTHORITY HAVING JURISDICTION.
 - CONTRACTOR TO PROVIDE RAIL LAYOUT IN SHOP DRAWINGS FOR ENGINEER REVIEW PRIOR TO FABRICATION. LAYOUT POST LOCATIONS TO AVOID CONTROL JOINTS AND EDGES OF CONCRETE AS REQUIRED.
 - AT CONTRACTOR'S OPTION, EMBED PLATES MAY BE SUBSTITUTED WITH 1/2" BASE PLATES OF SAME SIZE AND CONFIGURATION SHOWN. ANCHOR BASE PLATE TO THICKENED SLAB EDGE WITH 3/8" Ø THREADED ROD EMBED 3" IN SIMPSON SET-3G EPOXY. INSTALL ANCHORS PER MANUFACTURER'S INSTRUCTIONS.

1 THICKENED SLAB EDGE WITH RAILING

REV #	DATE	DESCRIPTION

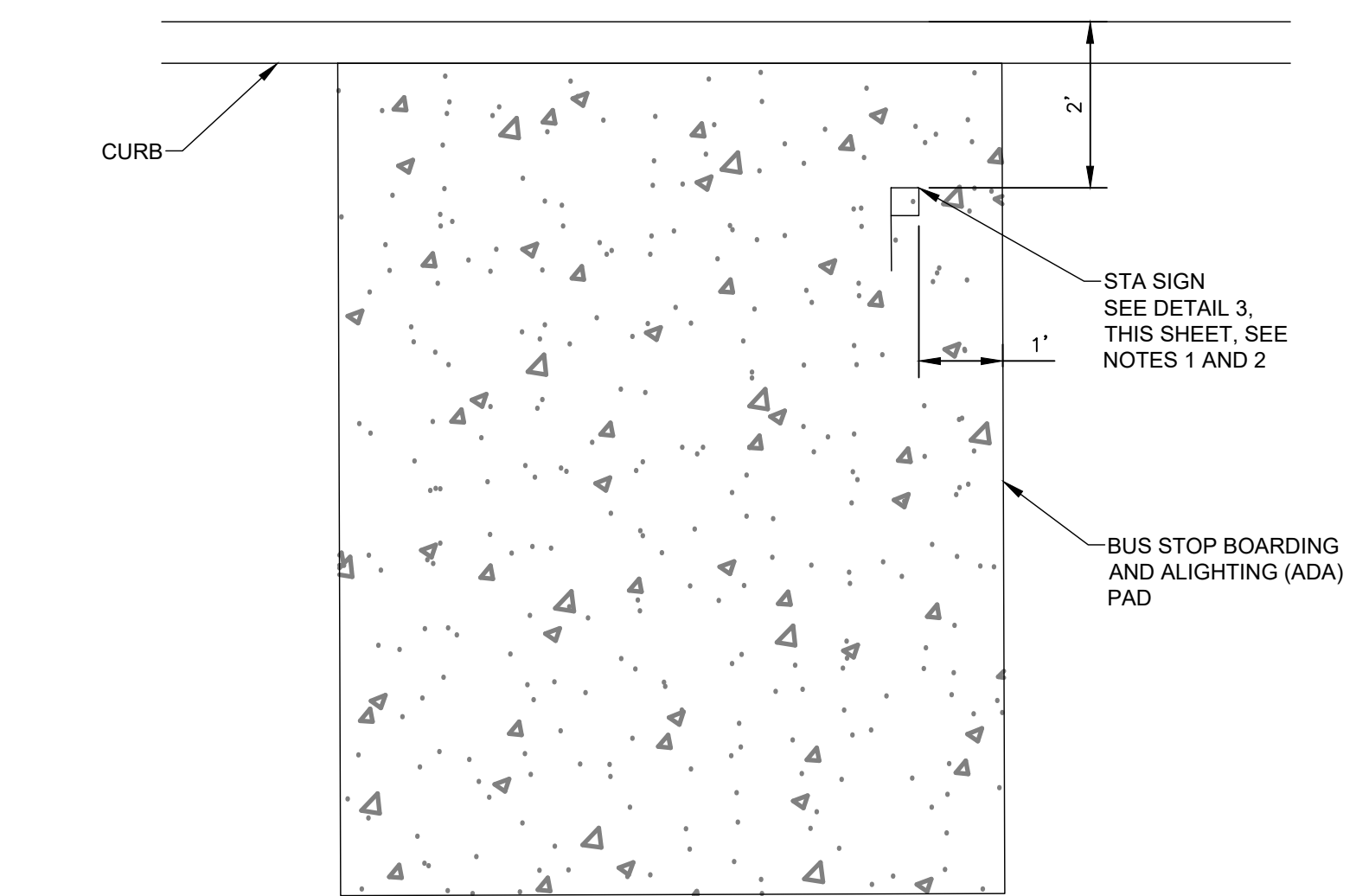
COFFMAN ENGINEERS
221 N. Wall Street, Suite 500
Spokane, WA 99201
ph 509.328.2994
www.coffman.com

Spokane Transit Authority
1230 W. Boone Avenue
Spokane, Washington 99201

TITLE: THICKENED SLAB EDGE WITH RAILING		PROJECT: STA - STANDARD DETAILS AND PLANS		SCALE: NTS	
CLIENT:	SPOKANE TRANSIT AUTHORITY	SHEET NO.:	SP-S03	PROJ. NO.:	232528
DATE:	04/16/24	CHECKED:	AS	DRAWN:	CEP

1 STANDARD BUS STOP SHELTER FOUNDATION

SCALE: NTS



- NOTES:**
- BOTTOM OF STA SIGN SHALL BE 7'-0" TO 7'-2" FROM TOP OF CONCRETE.
 - STA SIGN CONTENTS SHALL FACE ONCOMING TRAFFIC AND BE FLAGGED AWAY FROM THE STREET.

3 BUS STOP SIGN PLACEMENT

SCALE: NTS

I:\COFFMAN\COM\PROJECTS\SP024\OBS\240382_STA_2024_BUS_STOPS_IMPROVEMENTS\010_DWG\SP0240382_DETAILS.DWG:DETAILS - SIN AVRAM - LAST SAVED: July 2, 2024 - PLOT DATE: 7/3/24

P:\SP024\OBS\240382_STA_2024_BUS_STOPS_IMPROVEMENTS\010_DWG\SP0240382_DETAILS.DWG:SP-S03 - PEDERSEN, CHRISTIAN - LAST SAVED: April 17, 2024 - PLOT DATE: 4/17/24