

The Division Street Bus Rapid Transit (BRT) will convert the existing Route 25 to BRT service, with new stations and roadway modifications that will provide faster, safer, and more reliable bus service. This summary highlights the features and opportunities relevant to one of the future BRT stations.

**This station will...**



Connect to active transportation facilities, such as existing bike lanes on Country Homes Road and planned bike facilities on Holland Ave



Serve priority populations. Approximately 36% of households within a 0.25 mile walkshed of the project area are considered very low income

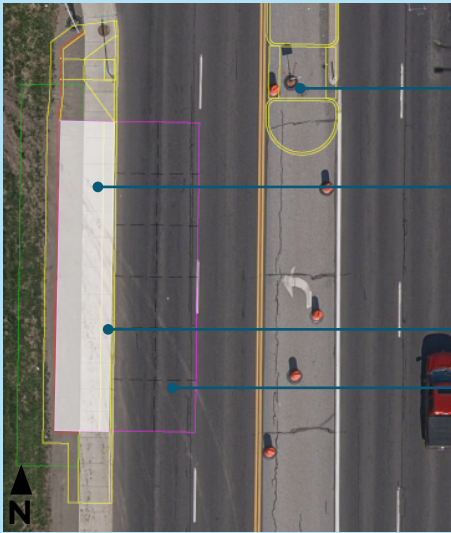


Support existing employment activity near the station, as well as potential future growth



Provide access to nearby destinations such as the Apple Tree Inn, Heritage Village Shopping Center, Best Western, and many eateries, retail locations, and other services

**Station Features**



New traffic island and crosswalk

Existing sidewalk integrated into the station design

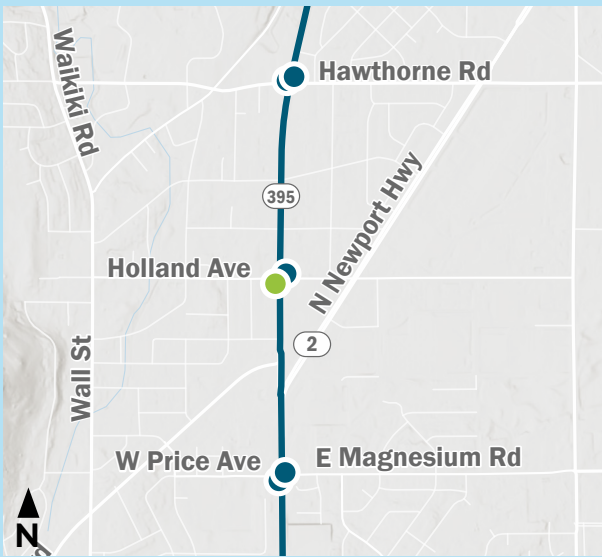
11' x 60' bus platform

In-lane bus pad

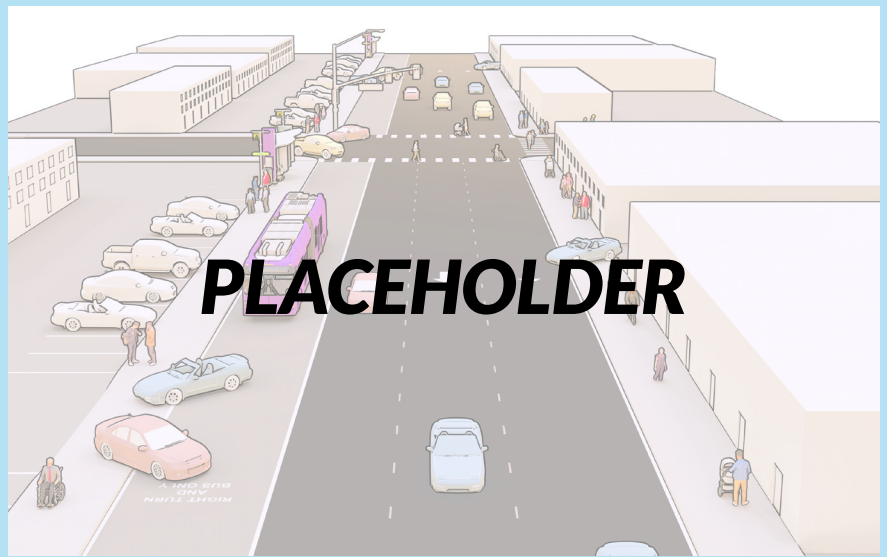
*Draft station drawing - design in process*



*Street view of the station location (Google Street View)*



*Division BRT alignment, Price Ave/Magnesium Rd to Hawthorne Rd*



*Draft corridor rendering - design in process*

For more information, visit [www.spokanetransit.com/divisionbrt](http://www.spokanetransit.com/divisionbrt) or email [divisionbrt@spokanetransit.com](mailto:divisionbrt@spokanetransit.com)