

The Division Street Bus Rapid Transit (BRT) will convert the existing Route 25 to BRT service, with new stations and roadway modifications that will provide faster, safer, and more reliable bus service. This summary highlights the features and opportunities relevant to one of the future BRT stations.

This station will...



Connect to active transportation facilities, such as planned bike facilities on Holland Ave



Serve priority populations. Approximately 36% of households within a 0.25 mile walkshed of the project area are considered very low income

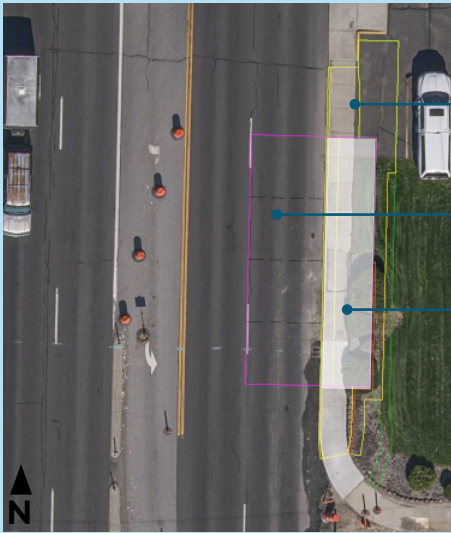


Support existing employment activity near the station, as well as potential future growth



Provide access to nearby destinations such as the Apple Tree Inn, Heritage Village Shopping Center, Best Western, and many eateries, retail locations, and other services

Station Features

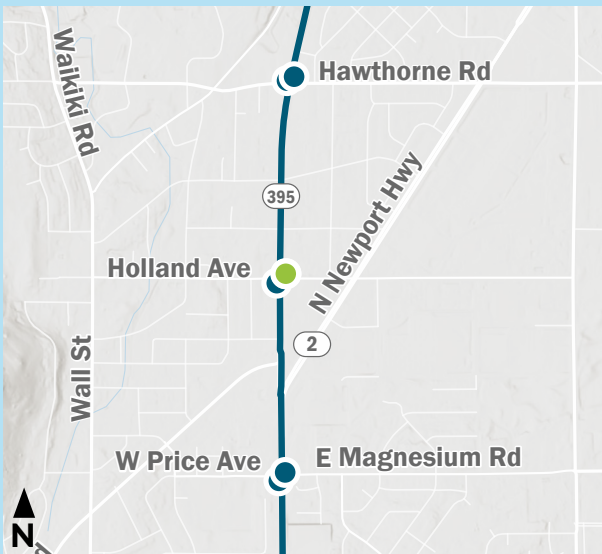


- Existing sidewalk integrated into the station design
- In-lane bus pad
- 10' x 50' bus platform

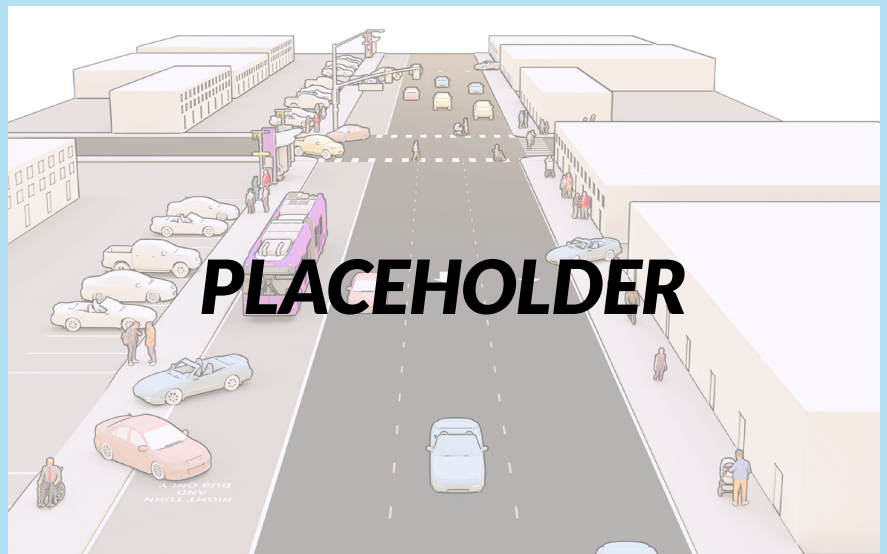
Draft station drawing - design in process



Street view of the station location (Google Street View)



Division BRT alignment, Price Ave/Magnesium Rd to Hawthorne Rd



Draft corridor rendering - design in process

For more information, visit www.spokanetransit.com/divisionbrt or email divisionbrt@spokanetransit.com