

The Division Street Bus Rapid Transit (BRT) project will convert the existing Route 25 to BRT service, with new stations and roadway modifications that will provide faster, safer, and more reliable bus service. This summary highlights the features and opportunities relevant to future BRT stations.

**This station will...**



Connect to bike-friendly facilities, such as planned bike facilities on Holland Ave



Approximately 36% of households within a 0.25 mile walkshed of the project area are considered very low income

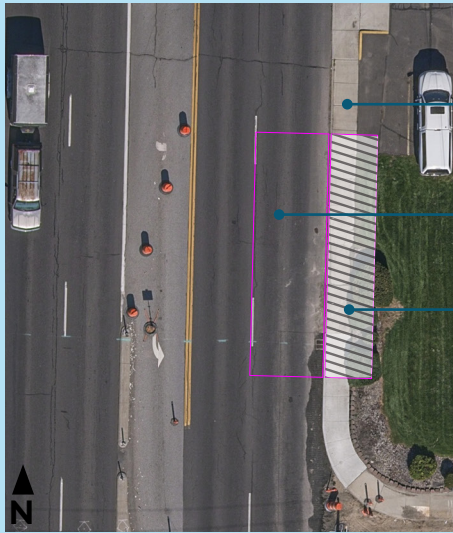


Support existing employment activity near the station, as well as potential future residential, employment, and ridership growth



Improve frequency of access to nearby destinations such as the Apple Tree Inn, Heritage Village Shopping Center, Best Western, and many eateries, retail locations, and other services

**Station Features**

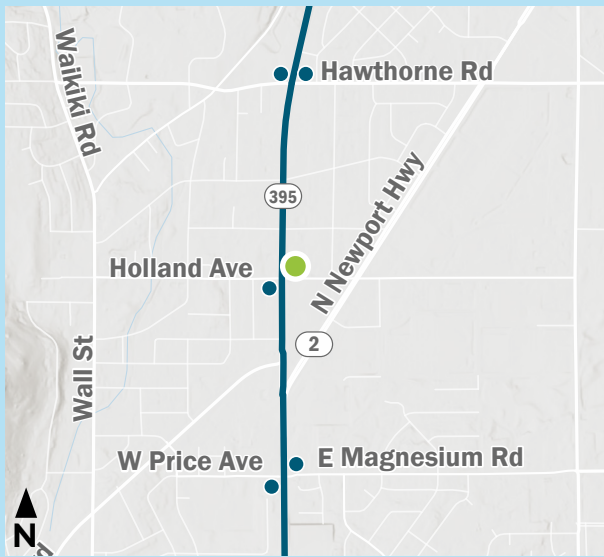


- Existing sidewalk integrated into the station design
- In-lane bus pad
- 10' x 50' bus platform

*Draft station drawing - design in progress*



*Street view of the station location (Google Street View)*



*Division BRT alignment, Price Ave/Magnesium Rd to Hawthorne Rd*



*Aerial view of Division at Holland - corridor rendering design in progress*

For more information, visit [www.spokanetransit.com/divisionbrt](http://www.spokanetransit.com/divisionbrt) or email [divisionbrt@spokanetransit.com](mailto:divisionbrt@spokanetransit.com)